



COMPLETE CATALOGUE TANZANIA



About Mul-T-Lock®

Founded in 1973, Mul-T-Lock® Ltd. is a worldwide leader in developing, manufacturing and marketing High Security products for institutional, commercial, industrial, residential and automotive applications.

Mul-T-Lock holds hundreds of international patent registrations for its innovative products, which include mechanical cylinders, locks and padlocks, electromechanical locking systems, electronic door solutions (EDS), automatic assembly and key-cutting machines and complementary accessories.

Mul-T-Lock products comply with the toughest international standards.

With a highly skilled workforce of over 550, Mul-T-Lock's factory is fully automated, using state-of-the-art technologies, including robotics and custom-designed machinery.

Mul-T-Lock has built an international reputation based on unique design, quality products, adaptation to changing market needs and excellent customer service.

The company sells its vast arsenal of field-proven High Security solutions through its selling units and through a distribution network in nearly 100 countries. Over 100 million users are supported through the auspices of 25,000 service centers deployed worldwide.

Mul-T-Lock is fully owned by ASSA ABLOY, the global leader in door opening solutions, with an annual turnover of more than €3.5 billion, and more than 42,000 employees worldwide.

Mul-T-Lock Tanzania

Established in 2011, Mul-T-Lock Tanzania is responsible for developing Mul-T-Lock's activities in this East African country and its neighboring markets.

Mul-T-Lock Tanzania combines Mul-T-Lock's high quality products with a strong focus on outstanding customer service. Dominating the local marketplace, it addresses the unique security needs of the high-potential Tanzanian market. Its loyal clientele includes many large companies and facilities, including the national prison authority, cellular operators, government agencies, the President's offices, the Parliament, industrial plants, banks, telecom operators, foreign organizations and many more. Mul-T-Lock Tanzania gives its clientele a wide range of High Security locking solutions and products, such as: cylinders, locks, padlocks and vehicle protection solutions.





MUL-T-LOCK, A RANGE OF PRODUCTS TO MEET YOUR NEEDS!

- ▶ A wide range of High Security locking solutions, from complex mechanical systems to advanced electronic offerings.
- ▶ A comprehensive offering of high quality locking products for a broad range of needs, including: mechanical cylinders, door locks, multipoint locks, cabinet locks, padlocks and vehicle locks.
- ▶ Exceptional customer service provided by a highly committed worldwide service & support network, serving the residential, commercial, industrial and automotive markets.
- ▶ Excellent product quality, evidenced by some of the toughest international standard certifications, including: UL, SKG, CEN, ANSI, ASTM, VDS and many more.
- ▶ Advanced key control, based on patent-protected key systems and dedicated key cutting machines.
- ▶ Extensive master keying capabilities, supported by smart, user- friendly software.
- ▶ Broad retrofitting possibilities, enabling the upgrade of existing locks in most countries.
- ▶ Outstanding user convenience, thanks to the One Key – Endless Possibilities concept, enabling the control of many different locks with a single key.
- ▶ Powerful burglar resistant technologies, incorporating the unique telescopic pin tumbler mechanism and many other state-of-the-art protective elements.
- ▶ Vast upgrade & expansion options for existing security systems.
- ▶ Easy installation procedures, specially devised for our customers' convenience.
- ▶ Smooth and accurate operation of the locking mechanism, thanks to Mul-T-Lock's unique telescopic pin technology.
- ▶ A powerful ASSA ABLOY Global Brand, recognized by customers around the world.

TABLE OF CONTENTS

CYLINDER PLATFORMS	5
CYLINDERS	19
PADLOCKS	29
LOCKS	43
VEHICLE PROTECTION SOLUTIONS (VPS)	69
ELECTRONIC DOOR SOLUTIONS (EDS)	75
MULTIPOINT LOCKS	101
INDEX	127



CYLINDER PLATFORMS

Mul-T-Lock MT5® Platform

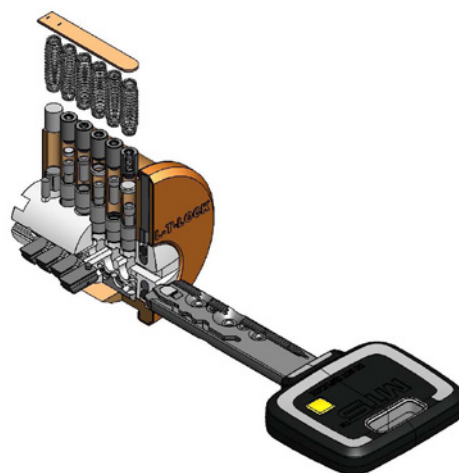
High Security with patented key control

Mul-T-Lock's MT5, the 5th generation patented state-of-the-art High Security cylinder platform, with built-in experience of 3 decades, features an advanced security concept that combines several powerful elements: the patented Alpha Spring located at the tip of the key, a magnetic key duplication card, and a dedicated computerized key-cutting machine - the KC5.

All combined, these features enable millions of possible combinations, extensive master-keying capabilities, keyway exclusivity for dealers, and automatic cutting of large key series.

The MT5's breakthrough features include:

- ▶ **Patented security:** the innovative Alpha Spring at the tip of the MT5 key - with a patent that expires only in 2025, engages a unique pin at the rear of the locking mechanism, to create an additional shear line.
- ▶ **KC5 - a dedicated key cutting machine:** the MT5 platform is supported by the super-smart newly developed KC5 electronic key cutting machine, that duplicates MT5 keys and automatically cuts large series of keys by interfacing with MASTERpiece software.
- ▶ **Advanced key control:** MT5 keys are provided with a coded magnetic duplication card - which can be read by the dedicated KC5 key cutting machine.
- ▶ **A new configuration** of Mul-T-Lock's unique telescopic pin technology, with 5 telescopic pins that fit special cuts on the MT5 key.
- ▶ **A huge** number of possible locking combinations, thanks to the double locking mechanism of telescopic pins and patented Alpha Spring.
- ▶ **Compliance** with the toughest international standards: European EN1303, SKG (Netherlands), Israeli standard, etc.



MT5®+

Mul-T-Lock High Security is even further enhanced by MT5+, an advanced version of the MT5 platform, featuring:

- ▶ An additional locking bar mechanism.
- ▶ An even greater number of possible combinations, enabled by the MT5+'s three different locking mechanisms.
- ▶ A special milled pattern on the patented key, which fits the locking bar.
- ▶ Exclusive keyway options based on the milled pattern.
- ▶ Extensive master keying capabilities, supporting very large and complex master key systems that incorporate hierarchy and matrix design requirements even within the same suite.



www.mul-t-lock.com



Mul-T-Lock Interactive® + Platform

Advanced key technology

Mul-T-Lock's Interactive+ platform builds on the foundation and innovation of the Interactive system, adding new features for enhanced effectiveness.

Mul-T-Lock's latest patent-pending technology protection is currently only available through the platform's unique pin design in Interactive+ cylinders.

- ▶ Interactive+ increases security effectiveness with a telescopic pin tumbler mechanism that requires the simultaneous alignment of both internal and external shear lines for plug rotation.
- ▶ Featuring enhanced intrusion protection, Interactive+ is highly pick, drill and bump resistant.
- ▶ Coded key cards and service through trained and authorized Mul-T-Lock Interactive+ dealers help prevent unauthorized duplication.
- ▶ Available in all formats and product types — retrofit cylinders, padlocks, locks and multi-point locks — one key can fit them all.
- ▶ Master keying capabilities allow users to design the system they need.
- ▶ Backwards compatibility provides existing Interactive users the flexibility to expand their systems seamlessly and migrate to Interactive+ at their own pace.

Mul-T-Lock Interactive+ Platform meets the world's most stringent standards.

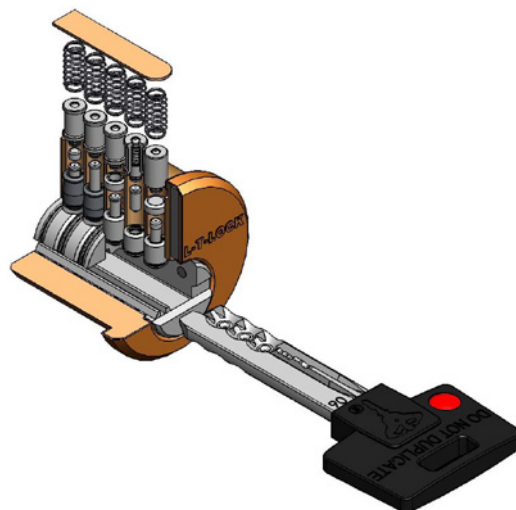


www.mul-t-lock.com

Mul-T-Lock Classic Platform

Mul-T-Lock's Classic platform is based on several special features:

- ▶ Mul-T-Lock's unique telescopic pin tumbler mechanism, with internal and external pins – requiring the simultaneous alignment of both internal and external shear lines for the plug to rotate.
- ▶ A specially designed plug, which forms a spherical, 3-dimensional shear line with the top and bottom pins, within the cylinder body.
- ▶ Steel inserts with high drill resistance
- ▶ High pick and bumping resistance
- ▶ Optional side and back pins, specially suited for master key systems.
- ▶ A coded Mul-T-Lock key card supplied in every package, to enhance key security. Additional keys may be cut by authorized Mul-T-Lock dealers, upon presentation of the key card – in accordance with Mul-T-Lock's official key cutting procedures.



The Classic platform meets the requirements of some of the most stringent European and American standards.



www.mul-t-lock.com



©2012 Mul-T-Lock Technologies Ltd. The Mul-T-Lock name and the musclemen logo, and any other name, mark or logo used by Mul-T-Lock and marked by ® or ™ sign, are registered/pending trademarks of Mul-T-Lock Ltd. in various countries. Mul-T-Lock reserves the right to make any product improvements or modifications without prior notice.

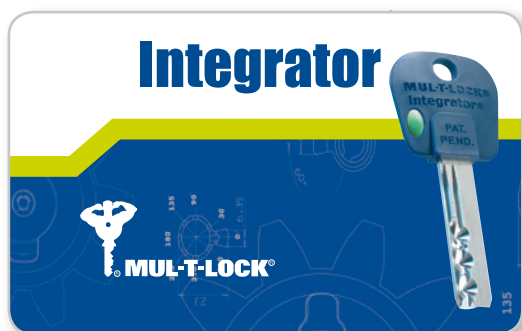
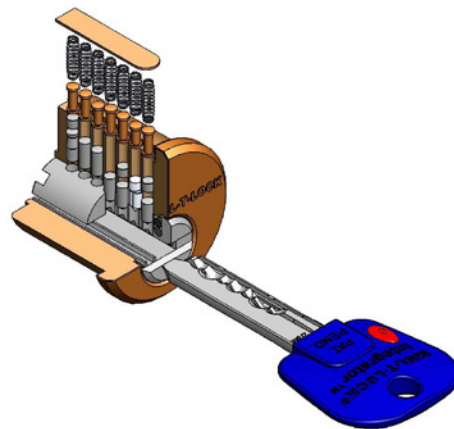
Mul-T-Lock Integrator® Platform

Mul-T-Lock's Integrator® platform, one generation ahead of the standard 7X7, introduces several advantageous features:

- ▶ A unique, high-precision 7-pin tumbler mechanism
- ▶ A patented key blank with a copy-protected oval cut, available in 3 different configurations: Internal, External and Twin
- ▶ Special launcher pins inserted into relevant cylinder plug chambers, corresponding to the key's oval cut

Thanks to its improved design, the robust Integrator platform offers enhanced tamper resistance, a range of keyed alike and keyed different options, and flexible master keying possibilities.

Key limitation is ensured by the key and key blank, supplied together with a coded Mul-T-Lock key card in every Integrator package. Additional keys may be cut by authorized Mul-T-Lock dealers, upon presentation of the key card – in accordance with Mul-T-Lock's official key cutting procedures.



www.mul-t-lock.com

Mul-T-Lock 7X7® Platform

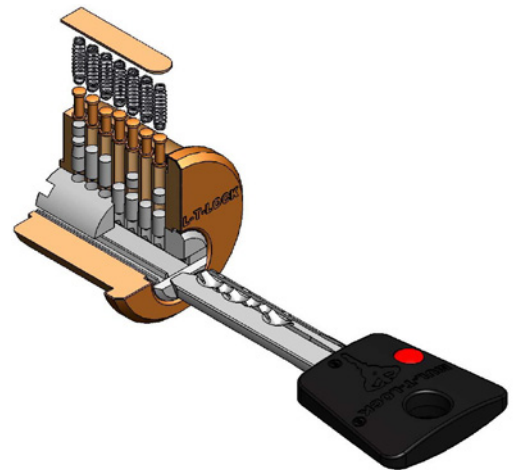
7X7 is Mul-T-Lock's standard platform, providing an excellent level of basic security and exceptional value for money.

The 7x7 features:

- ▶ A pin tumbler mechanism with 7 chambers
- ▶ A reversible nickel silver key with a plastic head

The 7x7 platform may be keyed alike, keyed different or master keyed.

Key limitation is ensured by the key and key blank, supplied together with a coded Mul-T-Lock key card. Additional keys may be cut by authorized Mul-T-Lock dealers, upon presentation of the key card – in accordance with Mul-T-Lock's official key cutting procedures.



www.mul-t-lock.com



©2012 Mul-T-Lock Technologies Ltd. The Mul-T-Lock name and the muscleman logo, and any other name, mark or logo used by Mul-T-Lock and marked by ® or ™ sign, are registered/pending trademarks of Mul-T-Lock Ltd. in various countries. Mul-T-Lock reserves the right to make any product improvements or modifications without prior notice.

Keying Possibilities

Mul-T-Lock offers its costumers a variety of convenient and secure keying solutions to meet their specific needs:

- ▶ **Keyed different:** Mul-T-Lock's traditional High Security equips each cylinder with its own distinct combination.
- ▶ **Keyed alike:** for exceptional customer convenience, Mul-T-Lock has developed the One-Key-Fits-All option, enabling users to open many locks - for example: home, office, garage & file cabinet - with a single key.
- ▶ **Master keying:** large organizations enjoy Mul-T-Lock's advanced and friendly master key systems, that are easy to manage even when the requirements are vast and complex.



www.mul-t-lock.com

Master Keying

The power of being your own master

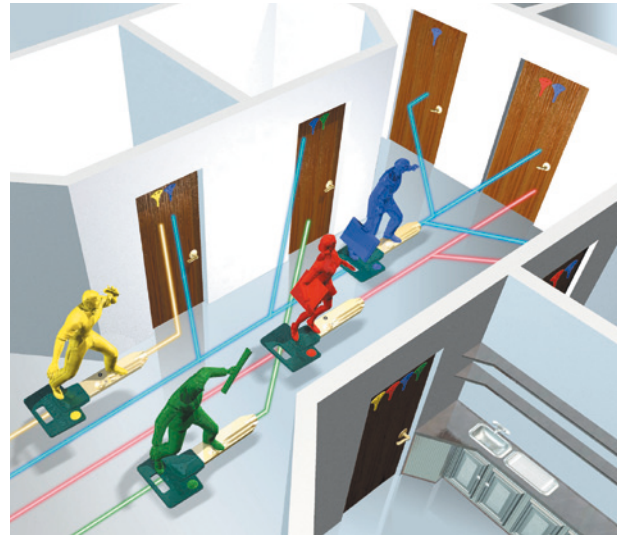
Mul-T-Lock is a world leader in the design and manufacture of master key systems for many needs and purposes. Mul-T-Lock's master key systems offer several major benefits for end-users:

- ▶ Overloaded key rings are replaced by a single master key.
- ▶ The main master key enables system managers to open every door in the system - while other users are provided with keys that only open specific doors.
- ▶ A wide range of Mul-T-Lock products – such as cylinders for the user's home, office and vehicle - may be incorporated into a single master key system, controlled by one key.

Mul-T-Lock's master keying products are also exceptionally locksmith-friendly and are supplied with pinning kits, tools and computerized programs.

Special training is available for dealers who wish to design and build master key systems for their own customers.

There is always a trade-off between security and convenience.

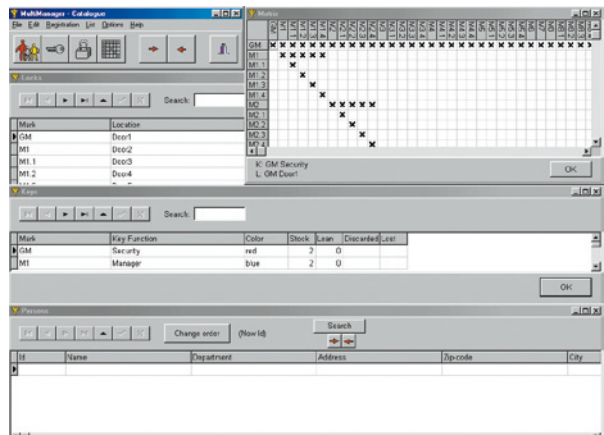
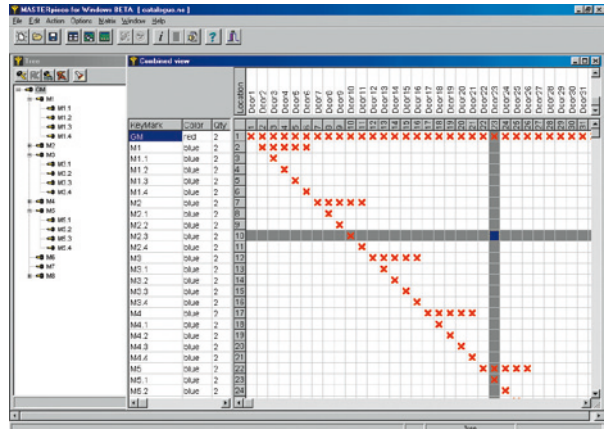


Master Keying Software

Mul-T-Lock's master keying offering includes two friendly software programs:

MASTERpiece: An advanced solution for the master key system designer. Automatically presenting all required information on the computer screen, and supporting both hierarchal and matrix design methods, MASTERpiece enables a fast, easy and efficient designing process.

Multimanager: The smart key management software program. Specially created for security officers who manage complex master key systems, this friendly program records all information about keys distributed to users.



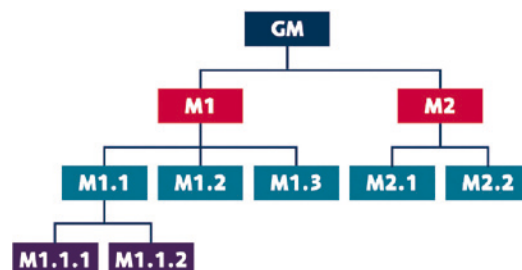
www.mul-t-lock.com

Master Keying Design Methods

Mul-T-Lock's master key systems may be based on two alternative design methods:

The hierarchal design: Incorporating several levels of access authorization, with higher levels authorized to open lower level entrances. Ordinarily hierarchal systems include Grand Master (GM) keys, which can open every cylinder in the system, all the way down to keys that unlock a single cylinder.

Illustration: In this example, the GM (Grand Master) key opens all cylinders, M1 & M2 are 2 different master keys accessing the doors of 2 separate departments, and each of the bottom level keys, such as M1.1.1 and M2.2, fits just one cylinder.



The Matrix design: Based on a matrix chart, in which each column represents a cylinder on the premises, and each row represents a key holder. This method enables the designer to define precise access authorization for each key.

Illustration: In this example, key K1 opens all 4 cylinders, K2 can only open C2, and C2 is a central cylinder, which can be opened by all 4 keys.

	C1	C2	C3	C4
K1	✗	✗	✗	✗
K2		✗		
K3		✗	✗	
K4		✗		✗

Key Options

Range of key heads

Mul-T-Lock offers a range of top quality key blanks for its various cylinder platforms. Keys are made of high-grade metals, for long-lasting durability.

Key may include the following features:

- ▶ Reversible nickel silver design
- ▶ Colored insert for easy identification
- ▶ Option for personalized message embossed on metal or plastic key heads
- ▶ Option for plastic key heads with personalized inserts
- ▶ Key duplication card



Interactive®+ – with plastic key head



Interactive®+ – all nickel silver



Interactive® CLIQ®



Interactive® – with plastic key head



Interactive® – all nickel silver



MT5®+



Integrator®



Classic – all nickel silver



MT5®



Classic – with plastic key head



7X7®



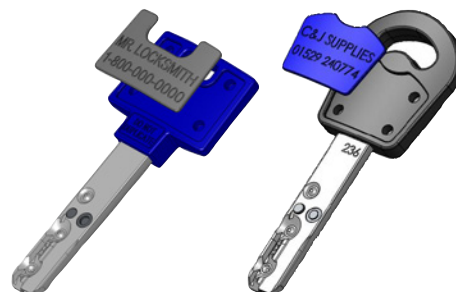
www.mul-t-lock.com

Key Options

Personalized key heads

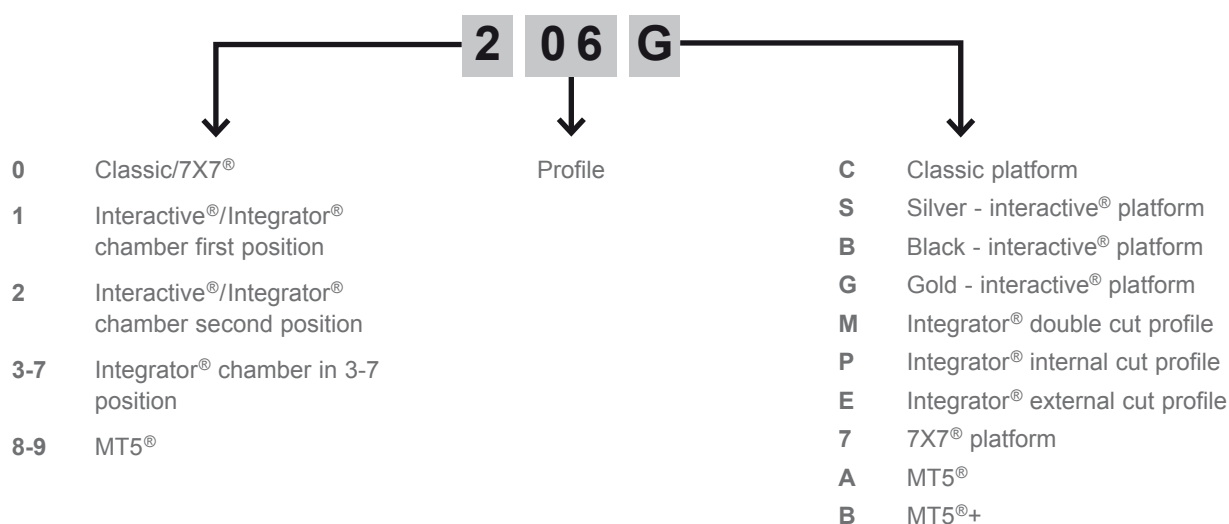
Mul-T-Lock offers costumers (locksmiths, OEMs etc.) three ways to personalize Mul-T-Lock's key blanks, thereby advertising their business on the keys they sell:

- ▶ A new cost-effective concept - personal info (name, logo, phone, etc.) embossed on plastic inserts, available in two different shapes that fit into special insert-compatible plastic key heads
- ▶ Personal info embossed on plastic key heads
- ▶ Personal info embossed on key heads of metal key blanks



Ordering key blanks

To order the key blanks of your choice, you must send in the appropriate key blank identification code, consisting of 4 digits/characters: 206S, 006C, 005C, etc.



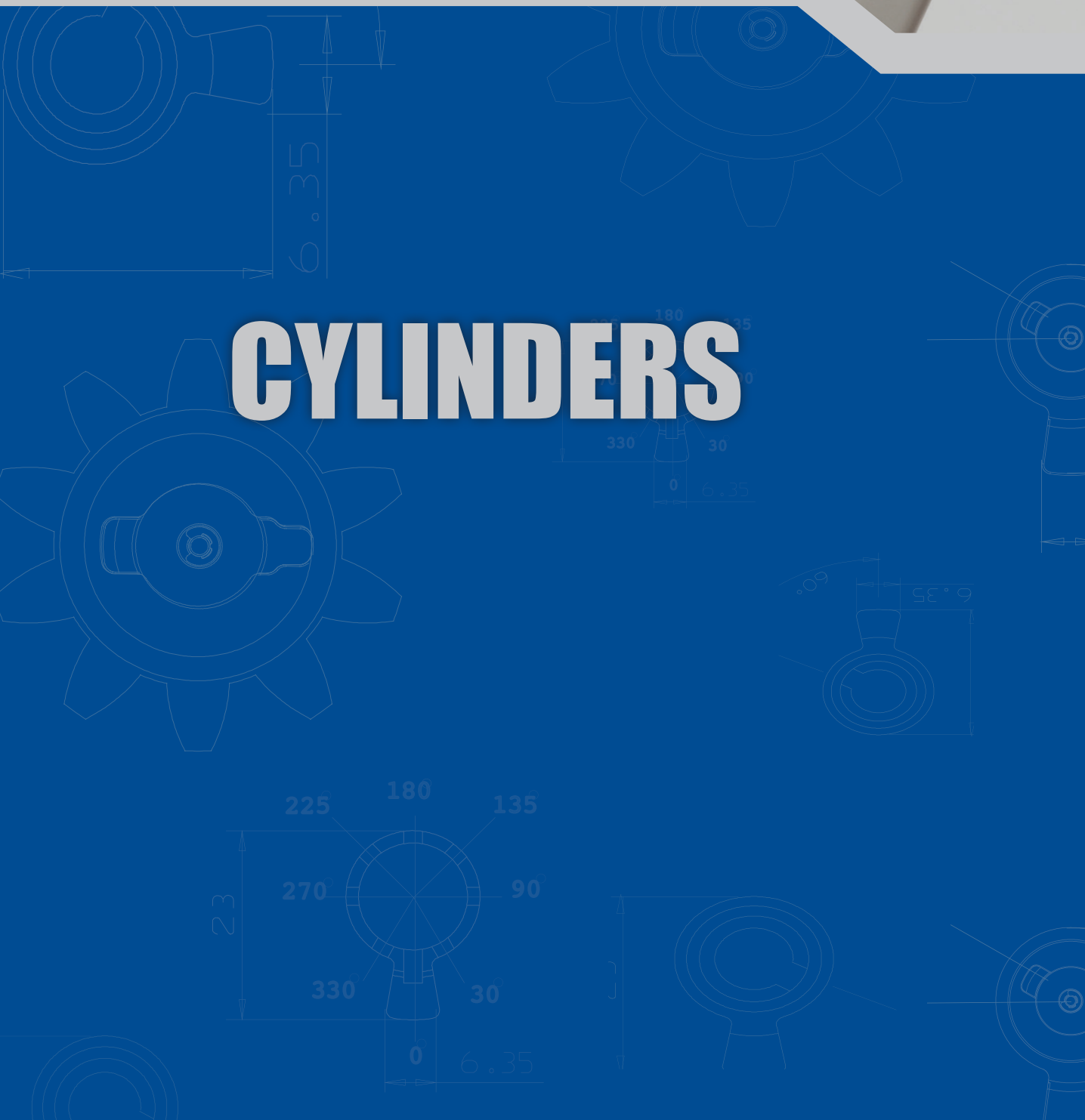
To order your personalized inserts or key blanks with personalized key heads (plastic or metal), please email the info to be advertised on the key head to Mul-T-Lock Headquarters.

The personalized key head will be designed, and once you have approved the graphics and placed your order, the personalized key blanks / inserts will be produced and delivered.

Please note:

Minimum quantity per order is:

- ▶ Plastic inserts – 3,000 units
- ▶ Key blanks with personalized plastic key heads – 2,500 units
- ▶ Personalized all-metal keys blanks - 1,000 units



CYLINDERS

Euro Profile Cylinder



Application

Compatible with locks and lock cases using Euro profile cylinder.

Operation

360° rotation by operating key or thumbturn. Standard double cylinder, full key insertion disengages other side.

Materials

Body and plug: high quality brass
Cam and cogwheel: steel
Pins: nickel silver and stainless steel

Standard finishes

Nickel satin, brass, shiny brass

Special finishes

Nickel chrome, antique brass

Cylinder mechanism

Mul-T-Lock's unique, high precision pin tumbler system.

Keys

Reversible nickel silver key with plastic key head and colored insert. Also available in all nickel silver.

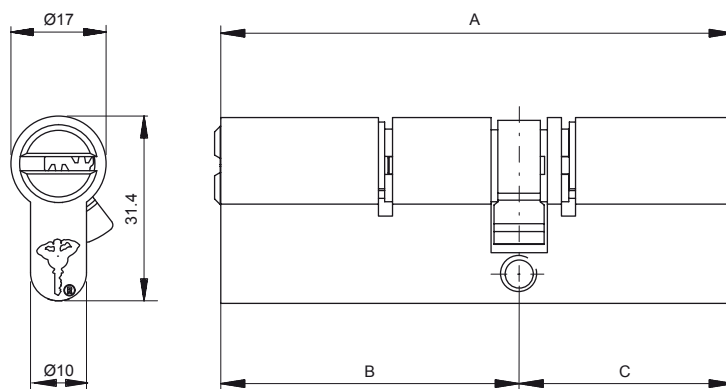
Cylinder options

- Classic, Interactive+, MT5® platforms
- '3 IN 1' (changeable combination)
- Keyed different, keyed alike
- Master keyed
- Variety of thumbturns, cams and cogwheels
- Emergency cylinder with both sides permanently operational

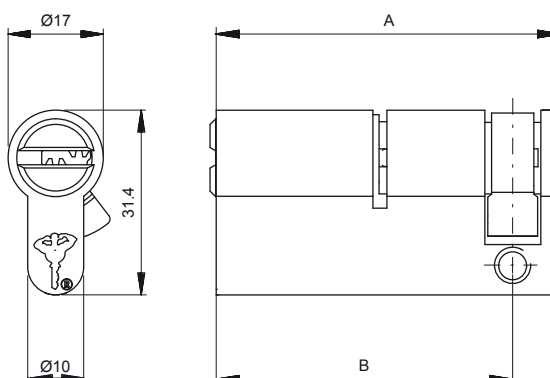
Standards

ISI 950, EN1303

Double cylinder



Single cylinder



www.mul-t-lock.com

Euro Profile Cylinder

Lengths Available (mm)

Double cylinder

A	B	C
62	31	31
66	31	35
66	33	33
70	35	35
71	31	40
71	33	38
75	40	35
76	31	45
76	33	43
76	38	38
78	33	45
80	40	40
80	45	35
81	31	50
81	33	48
81	38	43
82	47.5	34.5
83	35	48
83	45	38
85	45	40
85	50	35
86	31	55
86	33	53
86	38	48
86	43	43
88	40	48
88	50	38
90	45	45
90	50	40
90	55	35
91	31	60
91	33	58

A	B	C
91	38	53
91	43	48
93	40	53
93	48	45
95	50	45
95	55	40
95	60	35
96	31	65
96	33	63
96	38	58
96	43	53
96	48	48
100	50	50
100	55	45
100	60	40
100	65	35
101	31	70
101	38	63
101	43	58
101	48	53
101	68	33
105	55	50
105	60	45
105	65	40
105	70	35
106	53	53
110	55	55
110	60	50
110	65	45
110	70	40
110	75	35
111	48	63

A	B	C
115	60	55
115	65	50
115	70	45
115	75	40
115	80	35
116	33	83
118	33	85
120	60	60
120	65	55
120	70	50
120	75	45
120	80	40
125	50	75
125	65	60
125	70	55
125	80	45
130	50	80
130	55	75
130	65	65
130	70	60
130	95	35
135	55	80
135	60	75
135	65	70
135	100	35
136	68	68
140	40	100
140	60	80
140	65	75
140	70	70

Single cylinder

A	B
40.5	31
42.5	33
44.5	35
47.5	38
49.5	40
52.5	43
54.5	45
57.5	48
59.5	50
64.5	55
69.5	60
74.5	65
79.5	70
84.5	75
89.5	80
99.5	90
134.5	125

NOTE: For lengths from 40 mm up use standard plugs and additional spacers in order to get the required length. Other lengths are available by special order.

Not all lengths are available in all platforms.

U.K. Oval Profile Cylinder



Application

Compatible with lock and lock cases using UK oval profile cylinder.

Operation

360° rotation by operating key or thumbturn. Standard double cylinder, full key insertion disengages other side.

Materials

Body and plug: high quality brass
Cam and cogwheel: steel
Pins: nickel silver and stainless steel

Standard finishes

Nickel satin, brass

Cylinder mechanism

Mul-T-Lock's unique, high precision pin tumbler system.

Keys

Reversible nickel silver key with plastic key head and colored insert. Also available in all nickel silver.

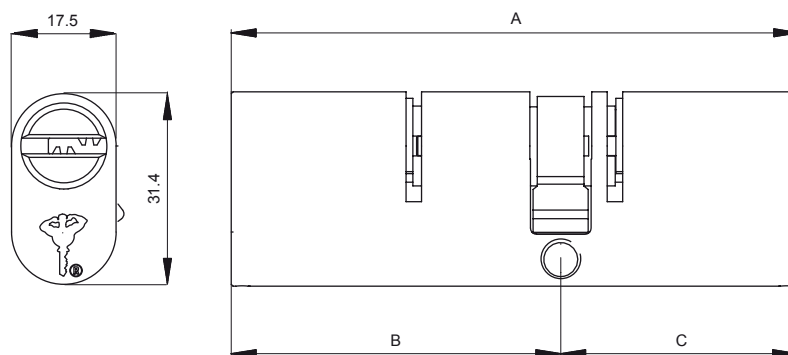
Cylinder options

- Classic, Interactive+, MT5® platforms
- '3 IN 1' (changeable combination)
- Keyed different, keyed alike
- Master keyed
- Variety of thumbturns, cams and cogwheels
- Emergency cylinder with both sides permanently operational

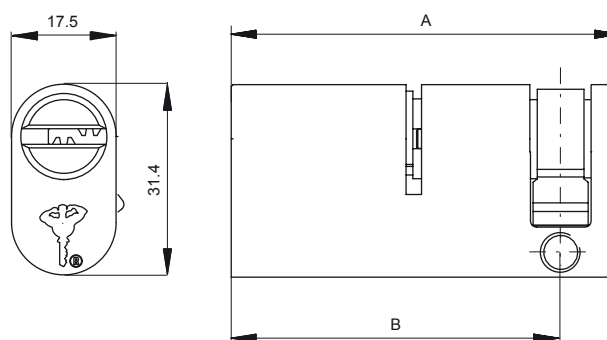
Standards

Applicable to CEN

Double cylinder



Single cylinder



U.K. Oval Profile Cylinder

Lengths Available (mm)

Double cylinder

A	B	C
62	31	31
66	33	33
70	35	35
71	33	38
75	35	40
76	33	43
80	35	45
80	40	40
85	35	45
85	40	40
90	35	55
90	40	50
90	45	45
95	35	60
95	40	55

A	B	C
95	45	50
100	35	65
100	40	60
100	45	55
100	50	50
105	35	70
105	40	65
105	45	60
105	50	55
110	40	70
110	45	65
110	50	60
115	45	70
115	50	65
120	50	70

Single cylinder

A	B
42.5	33
44.5	35
49.5	40
54.5	45
59.5	50
64.5	55
69.5	60
74.5	65
79.5	70

NOTE: For lengths from 40 mm up use standard plugs and additional spacers in order to get the required length.
Other lengths are available by special order.
Not all lengths are available in all platforms.

Special Cylinder Applications

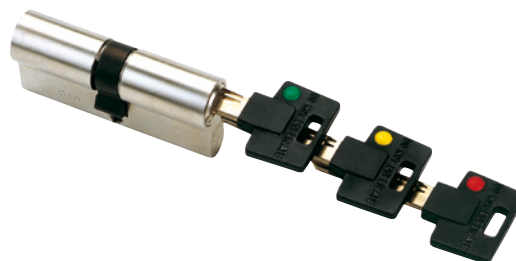
3 IN 1 cylinder

The '3 IN 1' cylinder has been designed by Mul-T-Lock to allow users to easily change their key combinations through a simple and speedy process:

The user inserts and operates the next key in a sequence of three keys, and the introduction of each new key invalidates the previous key combination.

When all three combinations have been used, the cylinder may be re-keyed by an authorised Mul-T-Lock locksmith.

The '3 IN 1' cylinder may be ordered with three separate duplicating cards for the green, yellow and red keys.



TLO - Temporary Lock Out cylinder

Mul-T-Lock's TLO (Temporary Lock-Out) cylinder offers effective and reliable entrance control, without resorting to complex software and expensive electronic systems. Fully mechanical, user-friendly and easy to install, the TLO is based on an innovative concept incorporating three keys: a blue key for ordinary use; a red lockout key, which, when turned in the cylinder, makes the door inaccessible to all blue keys; and a green reversal key, which reverses the red key effect, making the door accessible once more to regular blue keys.

Thus, access of persons who hold a regular key to the door may be prevented for as long as the person in charge wishes, without the troublesome procedures of replacing the cylinder or collecting all keys. Access may also be restored easily at any time, at the turn of a green key.

TLO is available in Mul-T-Lock's telescopic pin platforms, Classic and Interactive+.

Some suggested applications:

- Making a shop inaccessible to employees over the weekend.
- Making a storeroom inaccessible to company employees when sensitive equipment is in storage.



Construction master cylinder

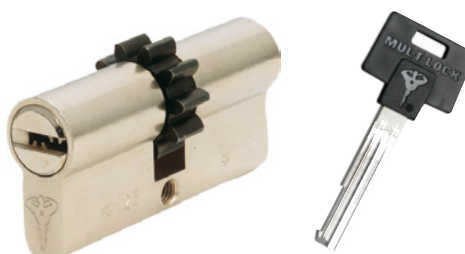
Mul-T-Lock has developed a new-concept High Security construction master cylinder, that provides construction contractors with maximum convenience, while ensuring peace of mind for new property owners.

Contractors using the new product enjoy control of all apartments on the construction site - or even on several sites - with one master key.

Each cylinder in the system also has an owner key, provided to the owner when he/she moves into the apartment.

At this time a technician turns a special change key in the cylinder, disabling the contractor's master key. This procedure is not reversible.

This creative new solution is fully contained in the cylinder itself and requires no supplementary devices.

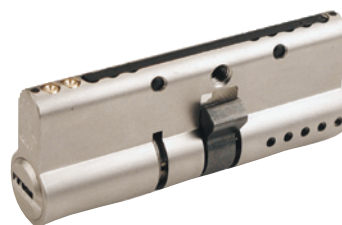


www.mul-t-lock.com

Special Cylinder Features

Reinforced cylinder

Enhanced resistance to breaking attempts.



Emergency cylinder

Operated with keys inserted and rotated on opposite sides, enabling both sides to be permanently operational.



Break Secure cylinder

Patented Euro profile cylinder, specially developed by Mul-T-Lock to meet a specific need: enhancing resistance to manipulation attacks. Unlike ordinary cylinders that tend to break in the middle when manipulated, allowing the door to be opened by attacker Break Secure snaps at the front. This keeps the door locked and the burglars outside, and permits the owners to open the cylinder with their original Mul-T-Lock keys when they return.



Anti-ligature thumbturn with external override

Innovative thumbturn with emergency override mechanism, specially designed to address the risk of self-harm within psychiatric and probationary type accommodation facilities.

Allows occupant privacy, while enabling immediate access for medical or supervisory staff if necessary.



Cylinder Accessories

Thumbturn range



Ellipse thumbturn



Oval thumbturn



Round thumbturn

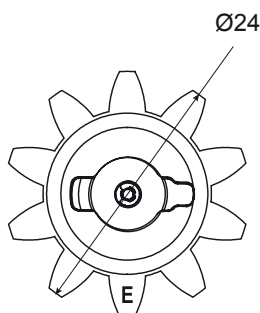
Anti-ligature thumbturn



Standard thumbturn

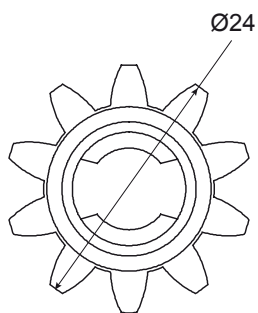


Cogwheels (diameter in mm)



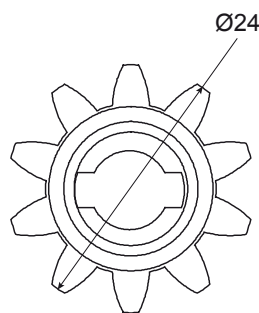
Z=10
m=2

P/N 82600280



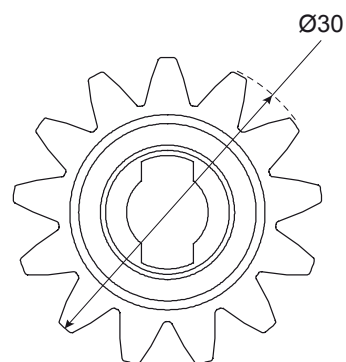
Z=10
m=2

P/N 80000461



Z=10
m=2

P/N 80001081



Z=13
m=2

P/N 89100011

Cylinder Cams

Options Available (mm)

<p>P/N 83600002</p>	<p>P/N 81200002</p>	<p>P/N 81200100</p>	<p>P/N 81200004</p>	<p>P/N 81200007</p>
<p>P/N 83600003</p>	<p>P/N 81200022</p>	<p>P/N 81200009</p>	<p>P/N 81200012</p>	<p>P/N 81200013</p>
<p>P/N 83600004</p>	<p>P/N 81200014</p>	<p>P/N 81200015</p>	<p>P/N 81200018</p>	<p>P/N 81200019</p>
<p>P/N 85700003</p>	<p>P/N 86101002</p>	<p>P/N 82400004</p>	<p>P/N 83003010</p>	<p>P/N 83003011</p>
<p>P/N 85600004</p>	<p>P/N 81700003</p>	<p>P/N 82600260</p>	<p>P/N 80002278</p> <p>Split cam</p>	<p>P/N 80002285</p> <p>TT split cam</p>

Cylinder Finishes

Standard finishes



Nickel Satin (NST)



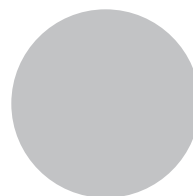
Electroplated Brass (EB/CB)
US4
BHMA606



Nickel Chrome Matt (NCM)
US26D
BHMA626



Shiny Brass (SB)
US3
BHMA605



Nickel Chrome (NC)
US26
BHMA625

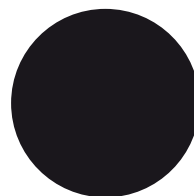
Special finishes



Dark (10B)
US10B
BHMA613



Antique Brass (AB)
US5
BHMA609



Black
US19
BHMA631



SBH



PVD



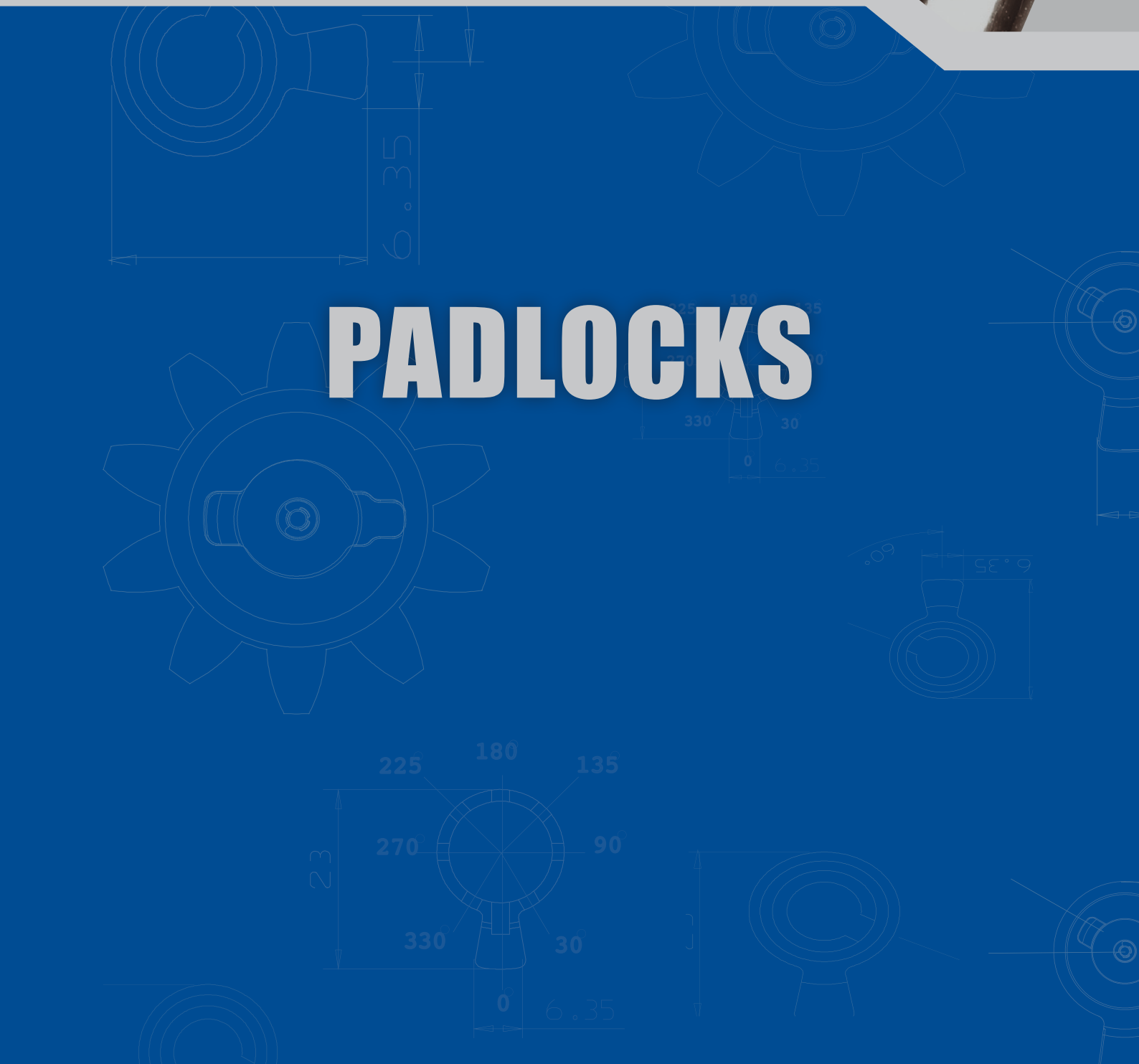
Antique Bronze (ABZ)

Note

- The colors above are for reference only and can vary from the original.
- Certain finishes are available on particular products only.
- Delivery times may vary according to type of finish.



www.mul-t-lock.com



PADLOCKS

E-Series Padlock

Extra High Security

Low Upper Body



Application

Extra High Security padlock, for general use.

Operation

The shackle is locked by a double ball bearing mechanism. Rotate key 90° to unlock.

Option

Available with retained shackle.

Materials

Body: case hardened steel

Shackle: hardened boron alloy steel

Finish

Black electrophoretic

Additional features

- Rotating disk.
- Protective shutter prevents dust contamination.
- Drainage holes prevent freezing.
- Sealing around shackle may be ordered separately.

Cylinder mechanism

Mul-T-Lock's unique high precision pin tumbler system. Pick and drill resistant for High Security needs.

Keys

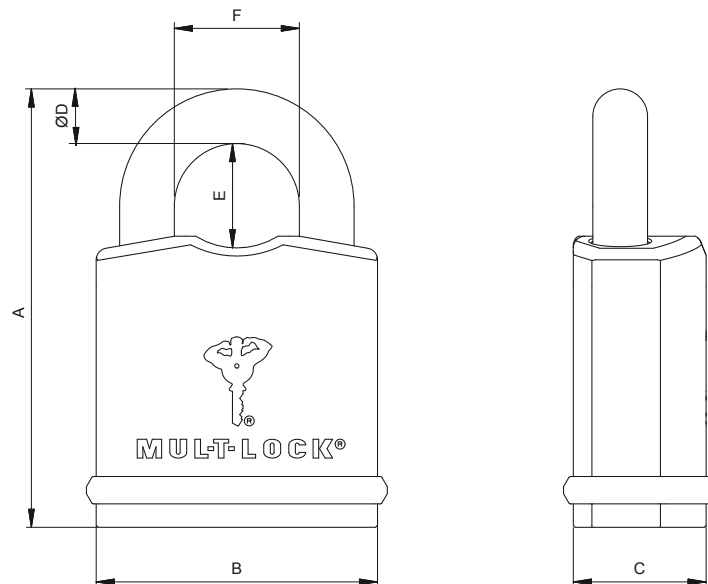
Reversible nickel silver key with plastic key head and colored insert for identification. Also available in all nickel silver.

Cylinder options

- Interactive+, MT5® platforms
- Keyed different, keyed alike
- Master keyed

Standards

CEN, ASTM



Model		Body					Shackle					Standard grades	
		A			B	C	D	E			F	CENASTM	
		A1	A2	A3				E1	E2	E3			
E8-L	mm	87	115	165	52	33	8	22	50	100	26	4	3
	Inch	3.4	4.5	6.5	2.1	1.2	0.3	0.9	1.9	3.9	1.1		
E11-L	mm	97	130	167	62	34	11	26	59	96	29	4	4
	Inch	3.8	5.1	6.6	2.4	1.3	0.4	1.1	2.3	3.8	1.2		
E14-L	mm	105	136	180	72	34	14	26	57	101	32	6	5
	Inch	4.1	5.4	7.1	2.8	1.3	0.5	1.1	2.2	4	1.3		

E-Series Padlock

Extra High Security

High Upper Body - Protected



Application

Extra High Security padlock for general use.

Operation

The shackle is locked by a double ball bearing mechanism. Rotate key 90° to unlock.

Options

- High (protected) upper body
- Available with retained shackle

Materials

Body: case hardened steel

Shackle: hardened boron alloy steel

Finish: black electrophoretic

Additional features

- Rotating disk.
- Protective shutter prevents dust contamination.
- Drainage holes prevent freezing.
- Sealing around the shackle, can be ordered separately.

Cylinder mechanism

Mul-T-Lock's unique high precision pin tumbler system. Pick and drill resistant for High Security needs.

Keys

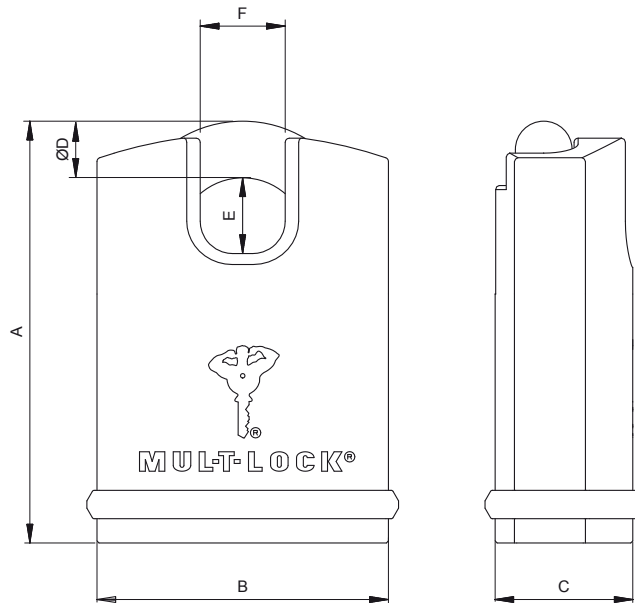
Reversible nickel silver key with plastic key head and colored insert for identification. Also available in all nickel silver.

Cylinder options

- Interactive+, MT5® platforms
- Keyed different, keyed alike
- Master keyed

Standards

CEN, ASTM



Model	Body				Shackle			Standard grades	
		A	B	C	D	E	F	CEN	ASTM
E8-H	mm	87	52	33	8	16	16	4	6
	Inch	3.4	2	1.2	0.3	0.6	0.6		
E11-H	mm	97	62	34	11	18	17	5	6
	Inch	3.8	2.4	1.3	0.4	0.7	0.7		
E14-H	mm	105	72	34	14	19	21	6	6
	Inch	4.1	2.8	1.3	0.5	0.7	0.8		



www.mul-t-lock.com

E-Series Padlock

Extra High Security

SBE - Sliding Bolt



Application

Extra High Security padlock for general use.

Operation

Rotate key 65° to unlock.

Options

- Different bolt diameters
- Different clearances

Materials

Body: case hardened steel
Bolt: hardened boron alloy steel
Finish: black electrophoretic

Additional features

- Rotating disk to resist drilling.
- Protective shutter to prevent dust contamination.
- Durable and corrosion-resistant.
- Spring loaded bolt for easy use.

Cylinder mechanism

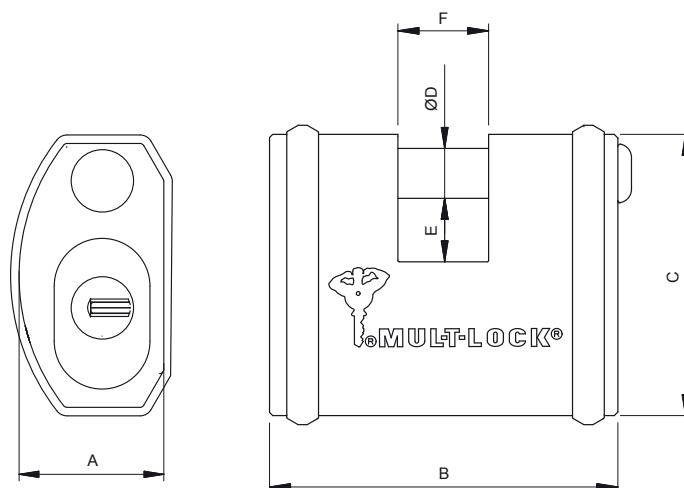
Mul-T-Lock's unique high precision pin tumbler system. Pick and drill resistant for High Security needs.

Keys

Reversible nickel silver key with plastic key head and colored insert for identification. Also available in all nickel silver.

Cylinder options

- Interactive+, MT5® platforms
- Keyed different, keyed alike
- Master keyed



Model number		Body			Bolt & Clearance			Standard Grade CEN
		A	B	C	D	E	F	
SBE 11 P	mm	34	77	62	11	14	20	4
	Inch	1.3	3	2.4	0.4	0.5	0.8	
SBE 11 R	mm	34	77	62	11	14	28	4
	Inch	1.3	3	2.4	0.4	0.5	1.1	
SBE 13 P	mm	34	86	72	13	15	25	5
	Inch	1.3	3.4	2.8	0.5	0.6	0.9	
SBE 13 R	mm	34	86	72	13	18.5	36	5
	Inch	1.3	3.4	2.8	0.5	0.7	1.4	

R- regular

P- optimal for use with pad-bar

C-Series Padlock

Professional High Security



Application

High Security padlock for general use.

Operation

Rotate key 55° - 65° to unlock.

Options

- Removable shackle with non-retaining key
- Pop-open shackle with retaining key (key needed for closing)
- Variety of shackle clearances
- Black or nickel finish
- C-13 model available with one-piece stainless steel shell and shackle protector
- Added Mul-T-Lock hasp
- Added shackle protector

Finish

- Black electrophoretic
- Chrome nickel bright

Materials

Shell: hardened steel

Core: black plated solid brass

Shackle: hardened boron alloy steel.

Additional features

- Protective shutter prevents dust contamination.
- Drainage holes prevent freezing.

Cylinder mechanism

Mul-T-Lock's unique high precision pin tumbler system. Pick and drill resistant for High Security needs.

Keys

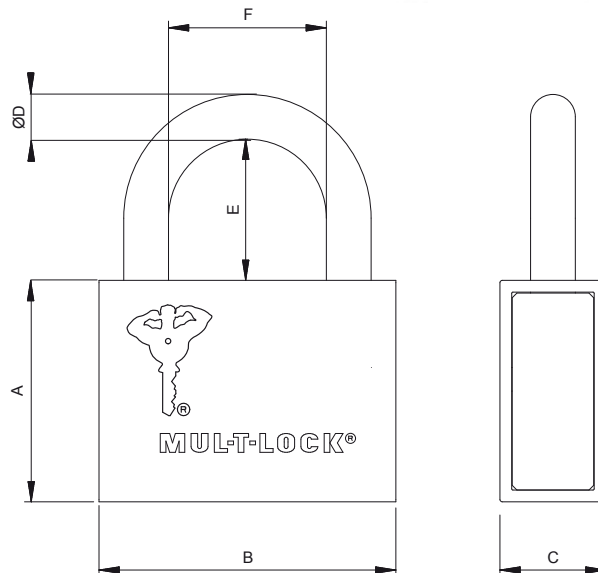
Reversible nickel silver key with plastic key head and colored insert for identification. Also available in all nickel silver.

Cylinder Options

- Classic, Interactive+, MT5® platforms
- Keyed different, keyed alike
- Master keyed
- '3 IN 1' (changeable combination)

Standards

CEN, ISI technical specification 21



Model		Body			Shackle						Standard grades	Suitable hasp#
		A	B	C	D	E				F	CEN	
						E	E1	E2	E3			
*C-6	mm	47	50	22	6	--	22	50	102	24	--	--
	Inch	1.85	1.97	0.86	0.23	--	0.86	1.97	4.1	0.94		
*C-8	mm	47	50	22	7.9	--	22	50	102	22	2	--
	Inch	1.85	1.97	0.86	0.31	--	0.86	1.97	4.1	0.86		
C-10	mm	47	63	22	9.5	--	30	63	102	33	3	10
	Inch	1.85	2.5	0.86	0.37	--	1.2	2.5	4.1	1.29		
C-13	mm	51	73	25	12.7	25	37	58	102	33	4	13
	Inch	2	2.87	0.98	0.5	0.98	1.46	2.28	4.1	1.29		
C-16	mm	53	92	32	15.8	--	50	63	102	38	5	16
	Inch	2.1	3.6	1.26	0.62	--	1.97	2.5	4.1	1.5		

Note: Adding a hasp considerably upgrades the level of security.

*Can not be supplied as removable shackle



www.mul-t-lock.com

C-Series Padlock

Professional High Security

SBC - Sliding Bolt



Application

High Security padlock for general use.

Operation

Rotate key 55° to unlock.
Spring-loaded bolt release.

Options

Black or nickel finish

Materials

Shell: hardened steel
Core: black plated solid brass
Bolt: hardened boron alloy steel

Additional features

Protective shutter prevents dust contamination.

Cylinder mechanism

Mul-T-Lock's unique high precision pin tumbler system. Pick and drill resistant for High Security needs.

Keys

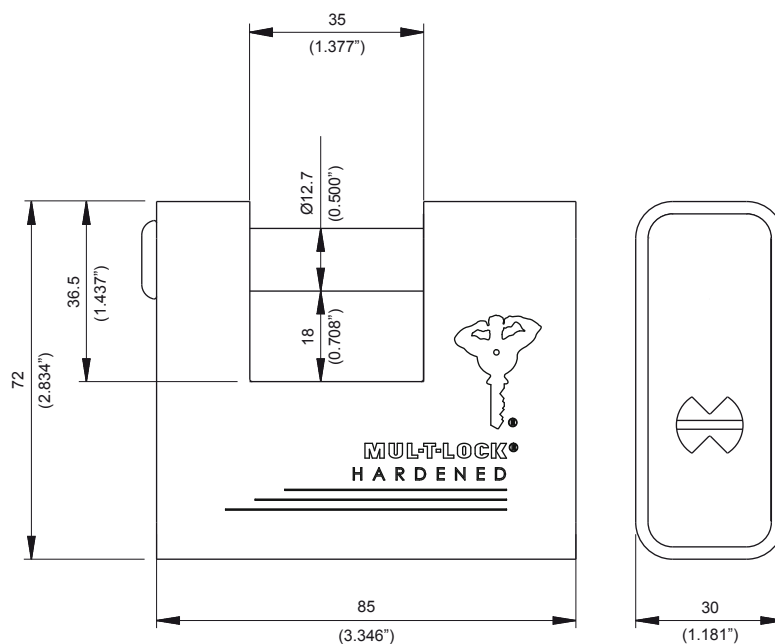
Reversible nickel silver key with plastic key head and colored insert for identification. Also available in all nickel silver.

Cylinder Options

- Classic, Interactive+, MT5® platforms
- Keyed different, keyed alike
- Master keyed
- '3 IN 1' (changeable combination)

Standard

Security grade CEN 4



C-Series Padlock

Professional High Security

Single Pin



Application

High Security padlock for general use.

Operation

Rotate key 55° to unlock.

Options

Variety of bolt lengths

Black or nickel finish

Materials

Shell: hardened steel

Core: black plated solid brass

Locking pin: hardened steel alloy

Additional features

- Protective shutter prevents dust contamination.
- Drainage holes prevent freezing.

Cylinder mechanism

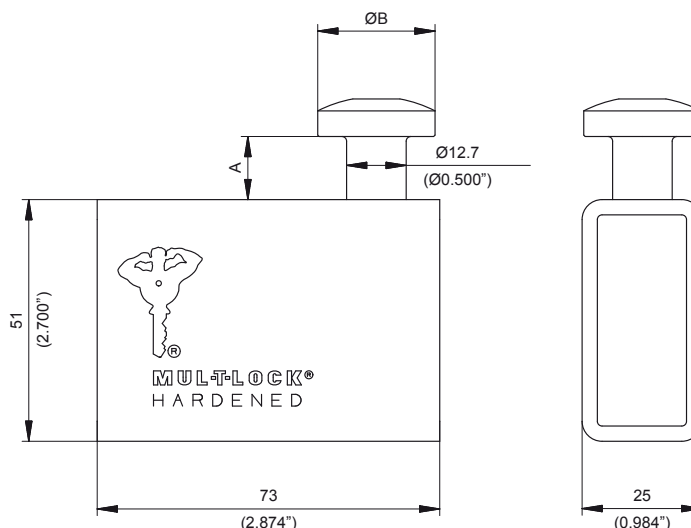
Mul-T-Lock's unique high precision pin tumbler system. Pick and drill resistant for High Security needs.

Keys

Reversible nickel silver key with plastic key head and colored insert for identification. Also available in all nickel silver.

Cylinder options

- Classic, Interactive+, MT5® platforms
- Keyed different, keyed alike
- Master keyed
- '3 IN 1' (changeable combination)



	A		B	
	mm	Inch	mm	Inch
L13	6	0.236	25	0.984
L10	10	0.393	25	0.984
L1	13	0.511	25	0.984
L8	13	0.511	30	1.181
L2	15	0.590	25	0.984
L3	21	0.826	25	0.984
L7	31	1.220	25	0.984
L4	35	1.377	25	0.984
L5	47	1.850	25	0.984
L6	80	3.149	25	0.984



G-Series Padlock 47, 55

All-purpose Security

Low Upper Body



Application

General use.

Operation

Rotate key 90° to unlock.

Options

Satin chrome finish

Materials

Body: Brass

Shackle: hardened boron alloy steel

Cylinder body, plug and pins: brass

Additional features

- High corrosion resistance
- Hammering resistance

Cylinder mechanism

Mul-T-Lock's unique high precision pin tumbler system. Pick and drill resistant for High Security needs.

Keys

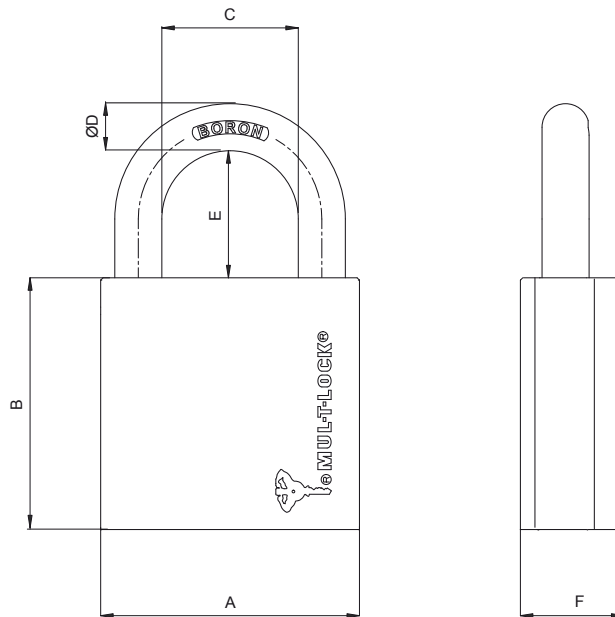
Reversible nickel silver key with plastic key head and colored insert for identification.

Cylinder Options

- 7x7, Classic, Interactive+ MT5® platforms
- Keyed different, keyed alike
- Master keyed

Standard

Security grade CEN 3



Padlock		A	B	C	D	E	F
G-47	mm	47	51	25	8	26.5	21
	Inch	1.850	2.007	0.984	0.314	1.043	0.826
G-55	mm	55	54	29	10	27	22
	Inch	2.165	2.125	1.141	0.393	1.062	0.866
G-60	mm	60	55	30	12	27	26
	Inch	2.362	2.165	1.181	0.472	1.063	1.024

G-Series Padlock 47P, 55P

All-purpose Security

High Upper Body - Protected



Application

General use.

Operation

Rotate key 90° to unlock.

Options

Satin chrome finish.

Materials

Body: brass

Shackle: hardened boron alloy steel

Cylinder body, plug and pins: brass

Additional features

- High corrosion resistance
- Hammering resistance

Cylinder mechanism

Mul-T-Lock's unique high precision pin tumbler system. Pick and drill resistant for High Security needs.

Keys

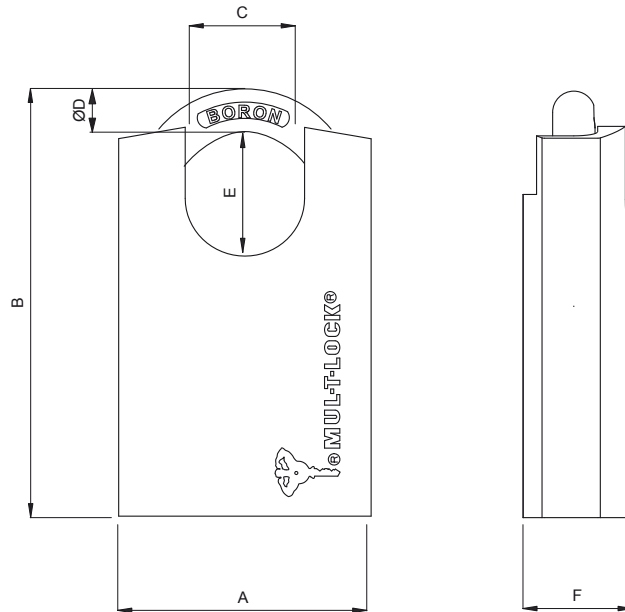
Reversible nickel silver key with plastic key head and colored insert for identification.

Cylinder options

- 7x7, Classic, Interactive+, MT5® platforms
- Keyed different, keyed alike
- Master keyed

Standard

Security grade CEN 3



Padlock		A	B	C	D	E	F
G-47P	mm	47	74	20	8	22.5	21
	Inch	1.850	2.913	0.787	0.314	0.885	0.826
G-55P	mm	55	77	20	10	23	22
	Inch	2.165	3.031	0.787	0.393	0.905	0.866



www.mul-t-lock.com

HaspLock



Applications

Robust locking solution combining padlock and hasp in one unit, to prevent loss of padlocks.

Options

- Key retaining / non-retaining
- Dust cover
- Drill protection
- Welded or bolted

Materials

Body: hardened steel investment casting

Bolt: 13 mm, hardened, non-removable

Cylinder Mechanism

Mul-T-Lock's unique high precision pin tumbler system. Pick and drill resistant for High Security needs.

Keys

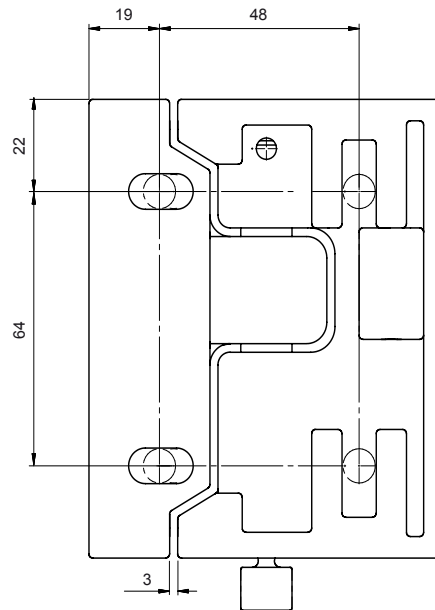
Reversible nickel silver key with plastic key head and colored insert for identification. Also available in all nickel silver.

Cylinder Options

- Classic, Interactive+ platforms
- Keyed different, keyed alike
- Master keyed

Standard

Security grade CEN 6



Round Padlock

“Hockey-Puck” Type

Applications

High Security padlock for commercial and residential locking, as well as trucks, vans, trailers and other vehicles.

Operation

Rotate key 90° key to unlock, then withdraw the bolt.

Options

- Nickel chrome matt finish
- Special protective shock resistant hasp

Materials

Body and bolt: hardened steel

Cylinder mechanism

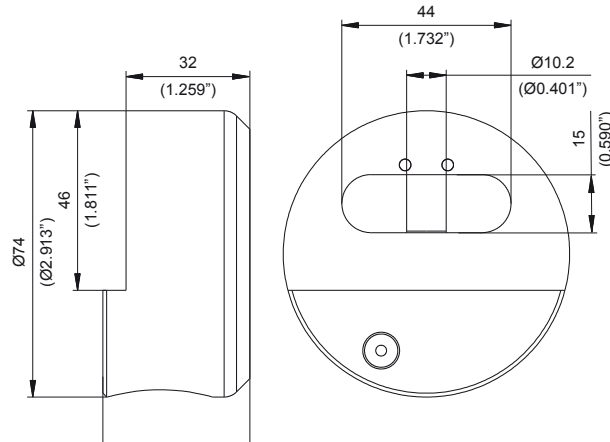
Mul-T-Lock's unique high precision pin tumbler system. Pick and drill resistant for High Security needs.

Keys

Reversible nickel silver key with plastic key head and colored insert for identification. Also available in all nickel silver.

Cylinder Options

- Classic, Interactive+, MT5® platforms
- Keyed different, keyed alike
- Master keyed
- '3 IN 1' (changeable combination)



Extreme Weather Plastic Cover

For G-47 & G-55 Padlocks



Application

Body and keyway protection for G-47 and G-55 padlocks in extreme conditions. Shock, water and UV resistance.

Options

- Padlock supplied with cover already assembled.
- Plastic cover ordered separately, supplied in a box, blister or plastic bag.

Materials

Dual injection molded plastic

Additional feature

Water seals around shackle legs provide additional weather resistance.

C-Series Accessories

Hasps & Shackle Protectors

Hasps

Application

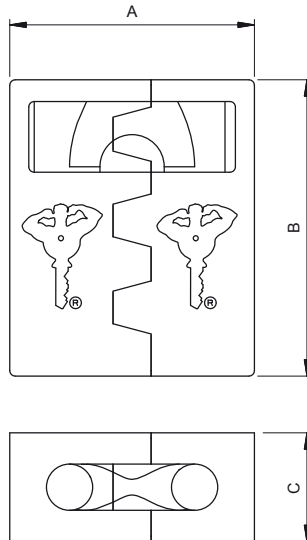
Secure housing for Mul-T-Lock C-Series padlocks with removable shackle. May be welded or bolted to steel, wood or aluminium structures.

Materials

High quality steel investment casting.

Options

Three types to fit 10, 13 and 16 C-Series removable shackle padlocks.



Hasps #		A	B	C
10	mm	80	95	40
	Inch	3.149	3.740	1.574
13	mm	90	109	40
	Inch	3.543	4.291	1.574
16	mm	110	116	48
	Inch	4.330	4.566	1.889

Shackle Protectors

Application

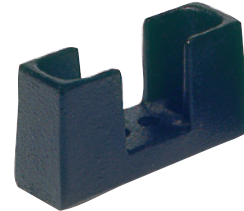
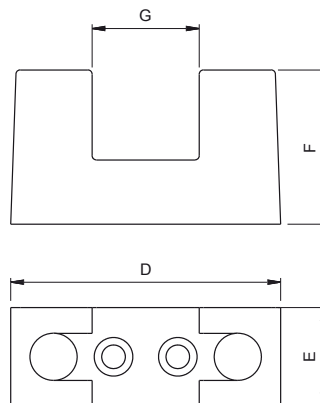
Additional protection for shackles of Mul-T-Lock C-Series padlocks.

Materials

High quality steel investment casting.

Options

Three types to fit 10, 13 and 16 C-Series padlocks with removable & pop-open shackle.



Padlock #		D	E	F	G
10	mm	63	23	36	25
	Inch	2.480	0.905	1.417	0.984
13	mm	73	25	40	25
	Inch	2.874	0.984	1.574	0.984
16	mm	92	32	50	30
	Inch	3.622	1.259	1.968	1.181



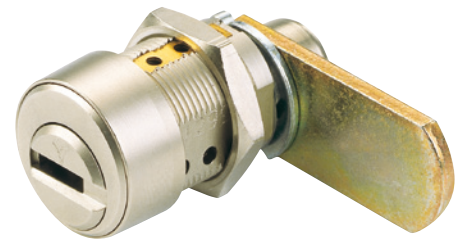


LOCKS



Cam Lock

Ø19 mm (¾")



Applications

Mul-T-Lock cam locks are available in various sizes, making them suitable for a wide range of applications: cabinets, drawers, parking meters, lockers, cash boxes, payphones etc.

Operation

Retaining: 90°, 180° cam rotation
Non-retaining: 90° cam rotation
Adjustable for clockwise or counter-clockwise operation.

Materials

Body, plug and ring: brass
Cam: steel
Pins: nickel silver and stainless steel

Standard finishes

Nickel satin, brass

Cylinder mechanism

Mul-T-Lock's unique, high precision pin tumbler system. Drill resistant for High Security needs.

Keys

Reversible nickel silver key with plastic key head and colored insert for identification. Also available in all nickel silver.

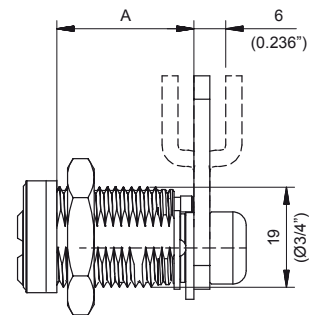
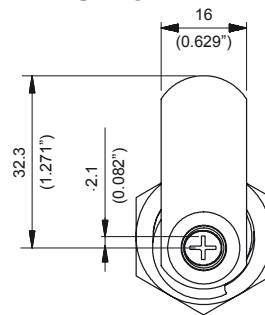
Cylinder options

- Classic, Interactive+ platforms
- Keyed different, keyed alike
- Master keyed
- Variety of cams

Standard

UL 437

Retaining key

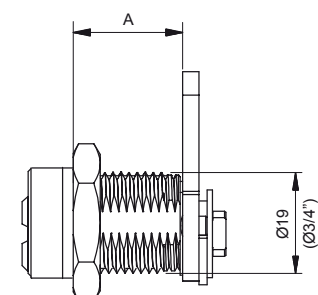
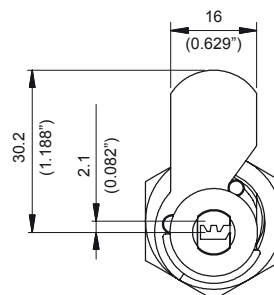


Retaining key hardware set:

- 1 flat cam
- 1 offset cam
- 1 spacer ring 3.4 mm
- 1 spacer ring 9.4 mm
- 1 plate for wood application

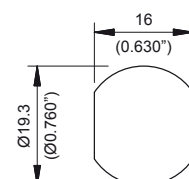
	A	Spacer	Chambers
Inch	5/8"	9.5	4
mm	15.9		
Inch	7/8"	N/A	4
mm	22.2		
Inch	7/8"	Included in set	5
mm	22.2		
Inch	1 1/8"	Included in set	5
mm	28.6		
Inch	1 1/2"	Included in set	5
mm	38.1		

Non-retaining key



Non-retaining hardware set:

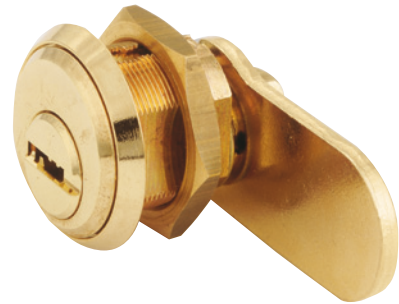
- 1 flat cam
- 1 spacer ring 3.4 mm
- 1 spacer ring 8.0 mm
- 1 plate for wood application



Opening required for installation

Cam Lock

Ø22 mm (7/8")



Applications

Mul-T-Lock cam locks are available in various sizes, making them suitable for a wide range of applications: cabinets, drawers, parking meters, lockers, cash boxes, payphones etc.

Operation

90° cam rotation. Adjustable for clockwise or counter-clockwise operation.

Materials

Body, plug and ring: brass

Cam: steel

Pins: nickel silver and stainless steel

Standard finishes

Nickel satin, brass

Cylinder mechanism

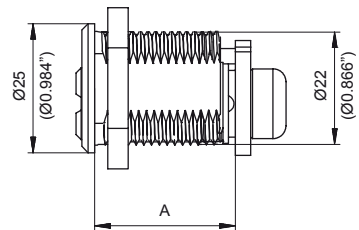
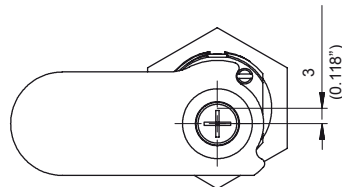
Mul-T-Lock's unique, high precision pin tumbler system. Pick and drill resistant for High Security needs.

Keys

Reversible nickel silver key with plastic key head and colored insert for identification. Also available in all nickel silver.

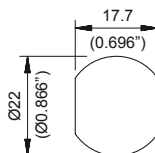
Cylinder options

- Classic, Interactive+, MT5® platforms
- Keyed different, keyed alike
- Master keyed
- '3 IN 1' (changeable combination)



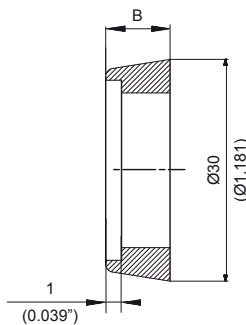
	mm	Inch	Chambers
A	22.5	0.885	4
	27.3	1.075	5
	38.3	1.5	5

Opening required for installation

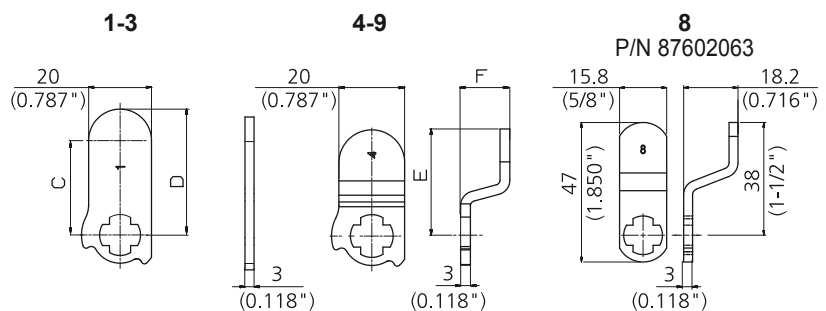


Spacer ring

	mm	Inch
B	2	0.078
	3	0.118
	4	0.157
	8	0.275



Cams available



P/N	C	D	Marking
87602005	30	40	1
87602126	44	54	2
51056090	90	100	3

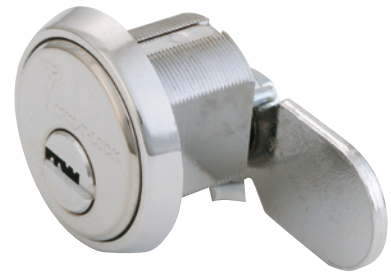
P/N	E	F	Cam
87602129	32	15	4
87602174	27.8	15	5
87602171	35.3	11.7	6
87602187	27.8	18	9



www.mul-t-lock.com

Cam Lock

Ø29 mm (1 1/8")



Applications

Mul-T-Lock cam locks are available in various sizes, making them suitable for a wide range of applications.

Operation

90° cam rotation. Adjustable for clockwise or counter-clockwise operation.

Materials

Body, plug and ring: brass

Cam: steel

Pins: nickel silver and stainless steel

Standard finish

Nickel chrome matt, shiny brass, nickel chrome

Special finishes

Antique brass

Cylinder mechanism

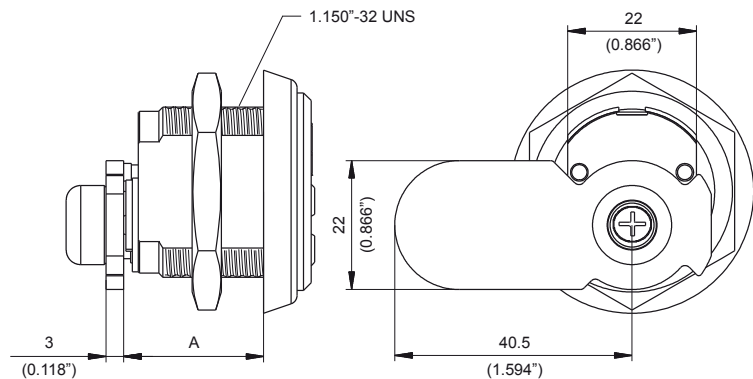
Mul-T-Lock's unique, high precision pin tumbler system. Pick and drill resistant for High Security needs.

Keys

Reversible nickel silver key with plastic key head and colored insert for identification. Also available in all nickel silver.

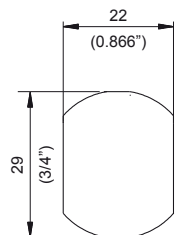
Cylinder options

- Classic, Interactive+, MT5® platforms
- Keyed different, keyed alike
- Master keyed
- '3 IN 1' (changeable combination)



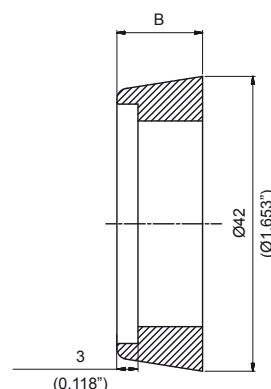
	mm	Inch	Chambers
A	24	0.994	4
	28.8	1.133	5

Opening required for installation



Spacer ring (standard mortise ring)

	mm	Inch
B	5.7	0.224
	8.9	0.350
	12.2	0.480
	15.5	0.610



Cam Lock for Mail Box



Application

Cam lock for mail boxes.

Operation

90° cam rotation. Adjustable for clockwise or counter-clockwise operation.

Materials

Body, plug and ring: brass

Cam: steel

Pins: nickel silver and stainless steel

Standard finish

Nickel satin

Cylinder mechanism

Mul-T-Lock's unique, high precision pin tumbler system. Pick and drill resistant for High Security needs.

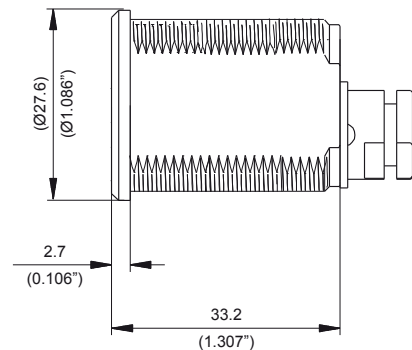
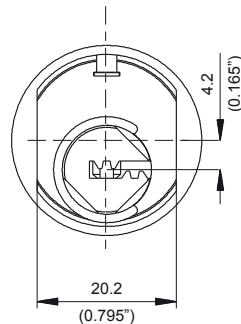
Keys

Reversible nickel silver key with plastic key head and colored insert for identification. Also available in all nickel silver.

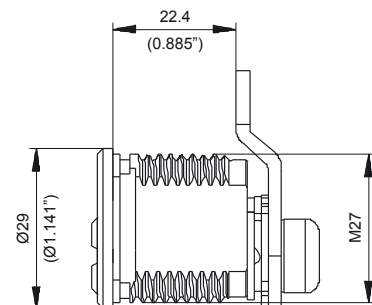
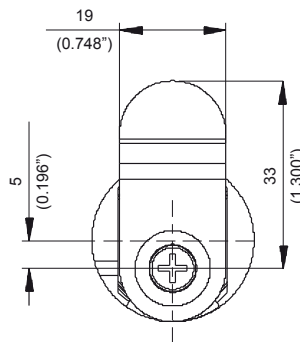
Cylinder options

- Classic, Interactive+ platforms
- Keyed different, keyed alike,
- Master keyed
- '3 IN 1' (changeable combination)

Cam lock for "Norwegian" type mail box



Cam lock for "Danish" type mail box



www.mul-t-lock.com

Lock for Key Deposit Box

Application

Lock for key deposit box.

Operation

90° cam rotation by operating key.

Materials

Body and plug: brass

Cam and housing: steel

Pins: nickel silver and stainless steel

Standard finish

Nickel satin

Cylinder mechanism

Mul-T-Lock's unique, high precision pin tumbler system. Pick and drill resistant for High Security needs.

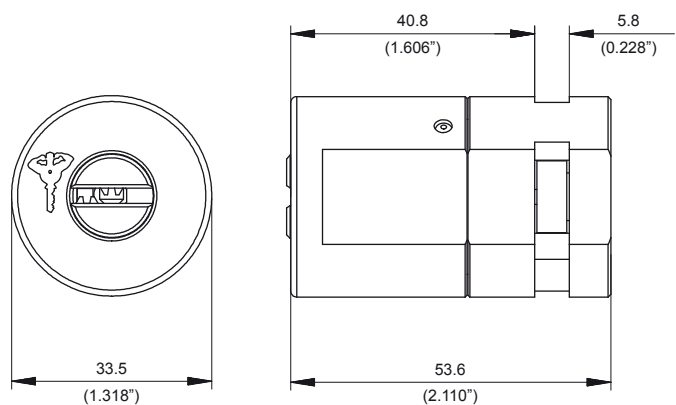
Keys

Reversible nickel silver key with plastic key head and colored insert for identification. Also available in all nickel silver.

Cylinder options

- Classic, Interactive+, MT5® platforms
- Keyed different, keyed alike
- Master keyed
- '3 IN 1' (changeable combination)

Lock and housing



Available as a set of lock and housing, or lock only (retrofit for Abloy locks).

Lock for “Lips” Type Key Deposit Box



Application

Lock for “Lips” type key deposit boxes.

Operation

90° cam rotation by operating key.

Materials

Body and plug: brass

Cam: steel

Pins: nickel silver and stainless steel

Standard finish

Nickel satin

Cylinder mechanism

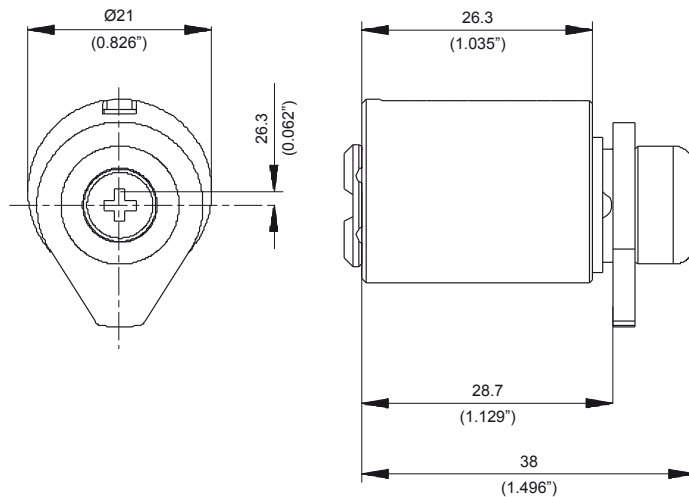
Mul-T-Lock's unique, high precision pin tumbler system. Pick and drill resistant for High Security needs.

Keys

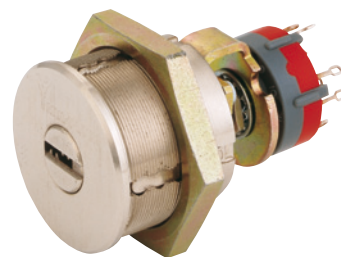
Reversible nickel silver key with plastic key head and colored insert for identification. Also available in all nickel silver.

Cylinder options

- Classic, Interactive+ platforms
- Keyed different, keyed alike
- Master keyed



Switch Lock for Alarm System



Application

Key control for electrical circuits for alarm systems.

Operation

See Table.

Materials

Body, plug and ring: brass

Cam: steel

Pins: nickel silver and stainless steel

Standard finishes

Nickel satin, brass

Cylinder mechanism

Mul-T-Lock's unique, high precision pin tumbler system. Pick and drill resistant for High Security needs.

Keys

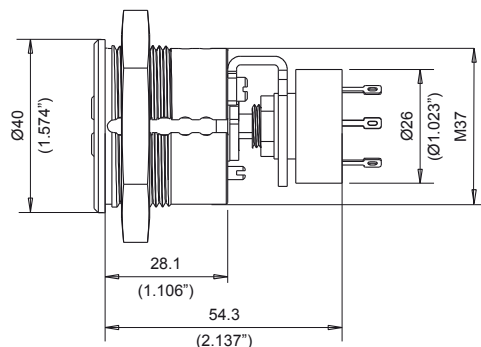
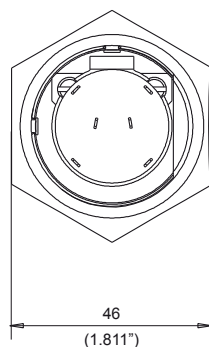
Reversible nickel silver key with plastic key head and colored insert for identification. Also available in all nickel silver.

Cylinder options

- Classic, Interactive+ platforms
- Keyed different, keyed alike
- Master keyed
- '3 IN 1' (changeable combination)

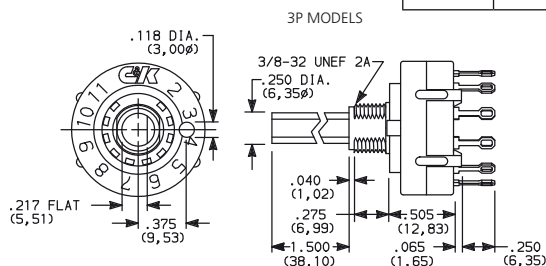
Standards

UL437, ISI 950

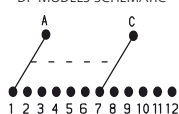


Key rotation	90°
Key removal	0°, 90°
Option	2 or 4 positions

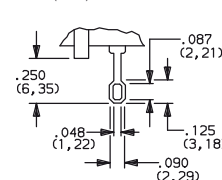
30° indexing			
No. Poles	Model no.	Switch function	Terminals
DP	A204	4 positions	A,C,1-4,7-10
90° indexing			
No. Poles	Model no.	Switch function	Terminals
DP	A214	2 positions	A,C,1,4,7,10



DP MODELS SCHEMATIC



(STD.) SOLDER LUG



Switch specifications

Type: C&K components 204, 214

Switch: 2.5 AMPS @125 VAC;

350 mA @ 125 VDC (UL/CSA)

Carry: 5 AMPS continuous

Electrical life: 15,000 make-and-break cycles

at full load up to 300,000 detente operations

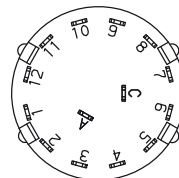
Insulation resistance: 10⁹ Ω min

Dielectric strength: 1,000 VRMS min @ sea level

Contact resistance: Below 20 mΩ typ. Initial @ 2-4 VDC, 100 mA

TERMINAL NUMBERS

Terminal numbers molded on bottom of housing.



Switch Lock

Ø19 mm (¾"), Ø22 mm (⅞"), Ø29 mm (1⅛")



Application

Key control for electrical circuits.

Operation

See Table.

Materials

Body, plug and rings: brass

Cam: steel

Pins: nickel silver and stainless steel

Standard finishes (Ø19, Ø22)

Nickel satin, brass

Standard finish (Ø29)

Nickel chrome matt, shiny brass, nickel chrome

Special finishes (Ø29)

Antique brass, antique bronze

Cylinder mechanism

Mul-T-Lock's unique, high precision pin tumbler system. Drill resistant for High Security needs.

Keys

Reversible nickel silver key with plastic key head and colored insert for identification. Also available in all nickel silver.

Cylinder options

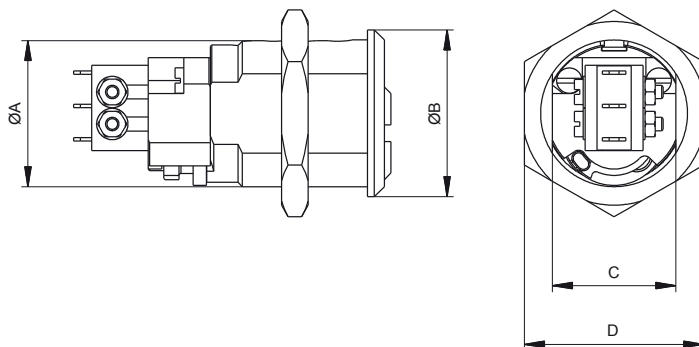
- Classic, Interactive+ platforms
- MT5® platform for Ø22, Ø29 switch locks
- Keyed different, keyed alike
- Master keyed

Standards

- UL437 - pick and drill resistance
- SII 950 - burglary resistance

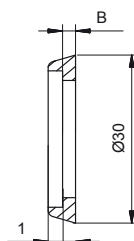
Burgess F4T6 switch specification

- Contacts: fine silver
- Terminals: 2.0 mm faston
- Temperature range: -40°C to +85°C
- Mechanical life: 10⁷ cycles minimum (impact free actuation)
- Protection type: enclosure – IP40



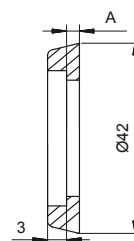
	Ø19				Ø22				Ø29			
Key rotation	90° or 360°				90° or 360°				90° or 360°			
Key removal	0° or 360°				0° or 360°				0° or 360°			
Electrical operation	Normally open/closed Momentary/permanent				Normally open/closed Momentary/permanent				Normally open/closed Momentary/permanent			
Cylinder dimensions	ØA	B	C	D	ØA	B	C	D	ØA	B	C	D
mm	19	22	16	25.4	22	25	18.5	27	29	33.8	26	35
Inch	¾	⅞	5/8	1	7/8	1	11/16	11/16	13/8	15/16	1	13/8

Ring for Ø22
(standard cam Ø22 ring)



	mm	Inch
B	1	0.04
	6	0.236

Ring for Ø29
(standard mortise ring)



	mm	Inch
A	5.7	0.022
	8.9	0.35
	12.2	0.48
	15.5	0.61

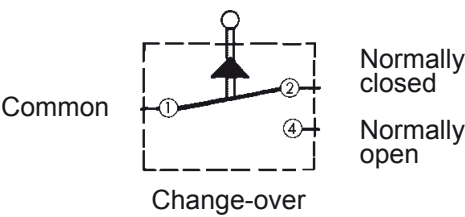


www.mul-t-lock.com

Switch Lock

Ø19 mm (¾”), Ø22 mm (⅞”), Ø29 mm (1⅛”)

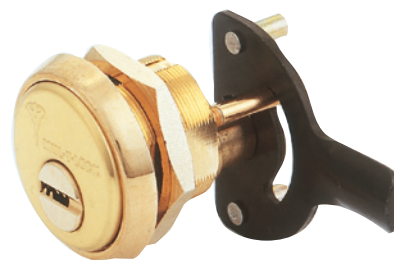
Circuit diagram F4 T6



Recommended max. electrical ratings		
Voltage (VAC)	Resistive load (A)	Inductive load (A)
125	5	5
250	5	5

Recommended max. electrical ratings		
Voltage (VDC) up to	Resistive load (A)	Inductive load (A)
30	5	5
50	2	2
75	1	1
125	0.5	0.06
250	0.25	0.03

Multi-Bolt Locking for Cabinet



Application

Multipoint locking for cabinets.

Operation

90° cam rotation by operating key.
Directly linked to cam and bolts.
Adjustable for clockwise or counter-clockwise operation.

Options

Solid spacer ring, available in different thicknesses.

Materials

Body, plug and ring: brass

Cam: steel

Bolts & support: zinc-plated steel

Pins: nickel silver and stainless steel

Standard finishes

Antique brass, antique bronze, nickel chrome, shiny brass

Cylinder mechanism

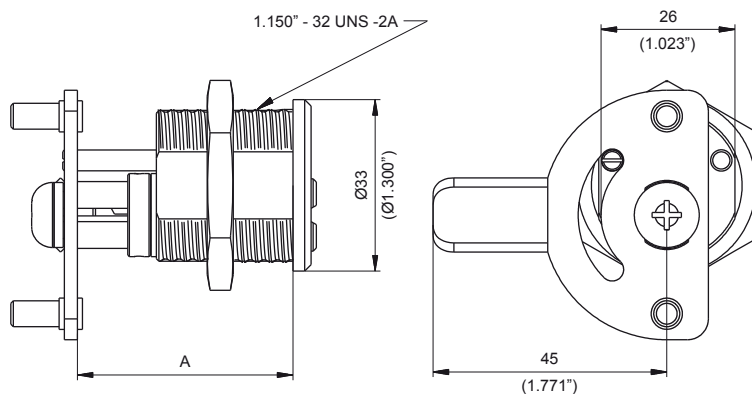
Mul-T-Lock's unique high precision pin tumbler system. Pick and drill resistant for High Security needs.

Keys

Reversible nickel silver key with plastic key head and colored insert for identification. Also available in all nickel silver.

Cylinder options

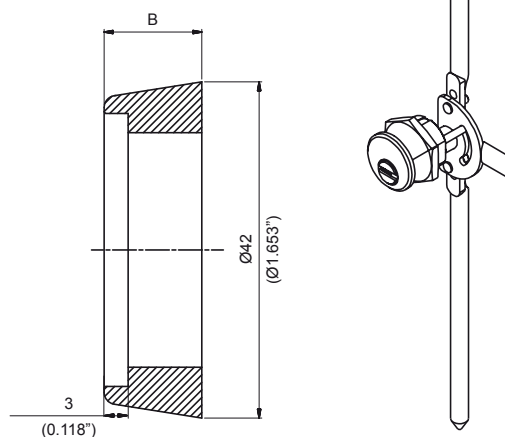
- Classic, Interactive®, MT5® platforms
- Keyed different, keyed alike
- Master keyed
- '3 IN 1' (changeable combination)



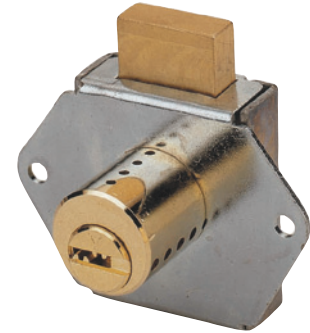
	mm	Inch	
A	37	1.45	4
	40	1.57	5

Spacer ring (standard mortise ring)

	mm	Inch
B	5.7	0.22
	8.9	0.35
	12.2	0.48
	15.5	0.61



Drawer Deadlock



Application

Securing drawers and small cabinets.

Operation

90° rotation by operating key

Lazy mechanism

Available with key retaining by special order.

Materials

Body and plug: brass

Lock case: steel

Dead bolt: brass

Pins: nickel silver and stainless steel

Standard finishes

Brass, nickel satin, shiny brass

Cylinder mechanism

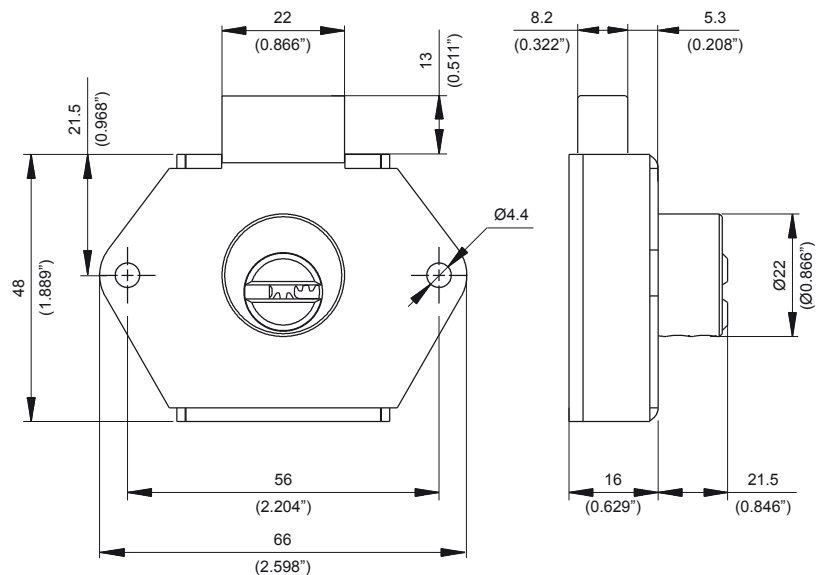
Mul-T-Lock's unique high precision pin tumbler system. Drill resistant for High Security needs.

Keys

Reversible nickel silver key with plastic key head and colored insert for identification. Also available in all nickel silver.

Cylinder options

- Classic, Interactive® platforms
- Keyed different, keyed alike
- Master keyed.



Drawer Latch Lock



Application

Securing drawers and small cabinets.

Operation

- 45° rotation by operating key
- Slam locking mechanism

Options

Two latch sizes available.

Materials

Body and plug: brass

Lock case: steel

Latch: cast zinc alloy

Pins: nickel silver and stainless steel

Standard finishes

Brass, nickel satin, shiny brass

Cylinder mechanism

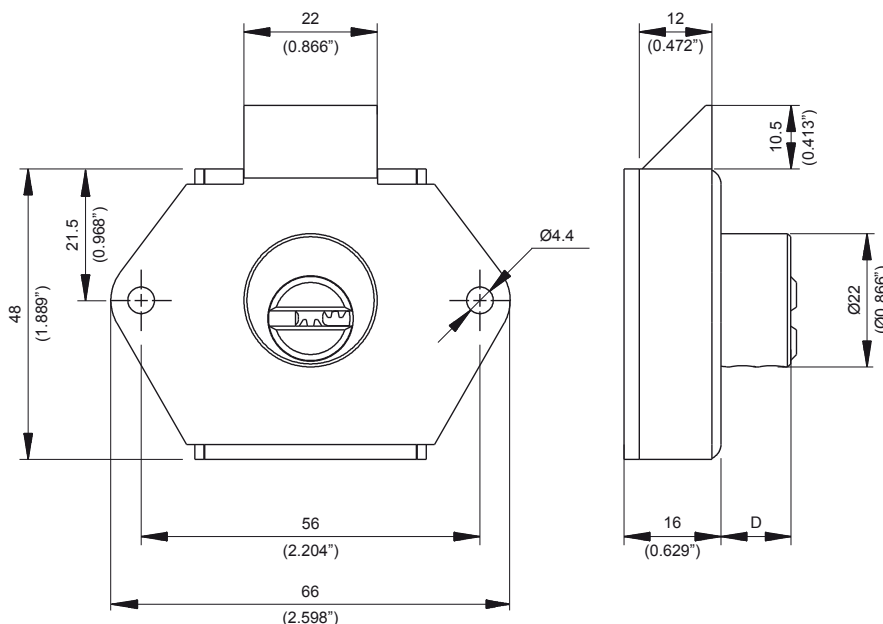
Mul-T-Lock's unique high precision pin tumbler system. Drill resistant for High Security needs.

Keys

Reversible nickel silver key with plastic key head and colored insert for identification. Also available in all nickel silver.

Cylinder options

- Classic, Interactive®, MT5® platforms
- Keyed different, keyed alike
- Master keyed



Type		D	Chambers
Regular	mm	11.5	4
	Inch	0.452	
Heavy duty	mm	21.5	5
	Inch	0.846	



Push Lock



Application

Mounted into 29 mm hole for securing sliding units (e.g. sliding glass doors). Suitable for various door thicknesses.

Operation

- Push to lock
- 90° rotation by operating key releases spring loaded locking pin
- Slam locking mechanism

Options

Bolt can be spring loaded/locked.

Materials

Body and plug: brass

Housing: aluminium

Pins: nickel silver and stainless steel

Standard finish

Nickel chrome

Cylinder mechanism

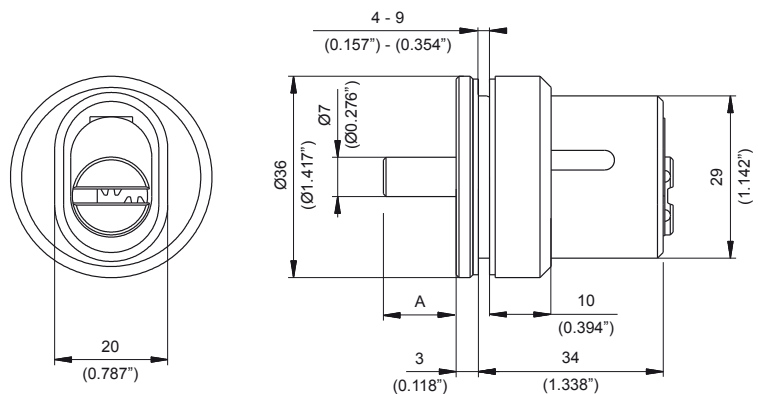
Mul-T-Lock's unique high precision pin tumbler system. Pick and drill resistant for High Security needs.

Keys

Reversible nickel silver key with plastic key head and colored insert for identification. Also available in all nickel silver.

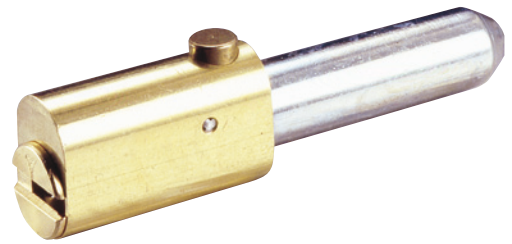
Cylinder options

- Classic, Interactive® platforms
- Keyed different, keyed alike
- Master keyed
- '3 IN 1' (changeable combination)



	mm	Inch
A	14	0.55
	20	0.78
	25	0.98
	32	1.26

Bullet Lock



Application

Securing vertical roller shutters.

Operation

Rotate 90° by operating key and push lock into existing housing or shutter channel.

Option

Bolt can be spring loaded/locked.

Materials

Body and plug: brass

Locking pin: steel

Pins: nickel silver and stainless steel

Standard finish

Brass, nickel satin

Cylinder mechanism

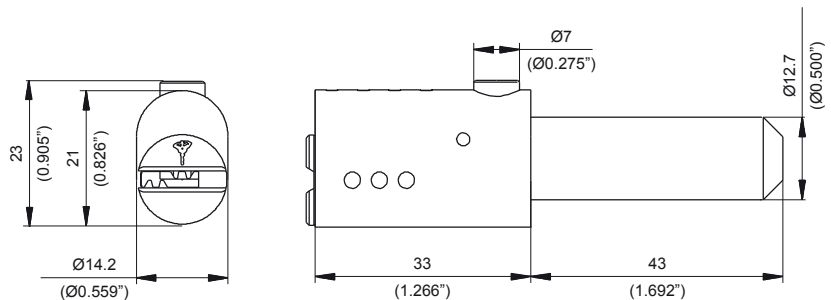
Mul-T-Lock's unique high precision pin tumbler system. Pick and drill resistant for High Security needs.

Keys

Reversible nickel silver key with plastic key head and colored insert for identification. Also available in all nickel silver.

Cylinder options

- Classic, Interactive+ platforms
- Keyed different, keyed alike
- Master keyed
- '3 IN 1' (changeable combination)



www.mul-t-lock.com

T-Handle Lock



Application

Securing vending machines with standard T-handle.

Operation

Rotate key 90° to unlock.

Materials

Body and plug: brass

Locking pin: hardened steel

Pins: nickel silver and stainless steel

Standard finish

Nickel satin

Cylinder mechanism

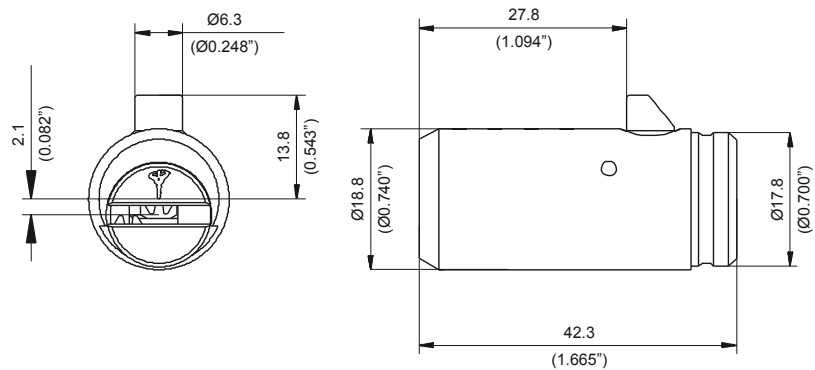
Mul-T-Lock's unique, high precision pin tumbler system. Drill resistant for High Security needs.

Keys

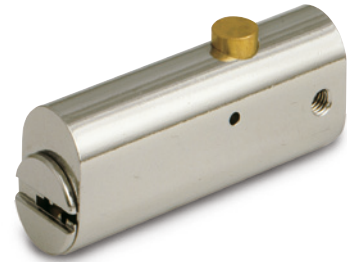
Reversible nickel silver key with plastic key head and colored insert for identification. Also available in all nickel silver.

Cylinder options

- Classic, Interactive® platforms
- Keyed different, keyed alike
- Master keyed



File Cabinet Lock



Application

Locking file cabinets.

Operation

- Push to lock.
- Rotate 90° left or right to unlock.

Options

Bolt can be spring loaded/locked.

Materials

Body and plug: brass

Pins: nickel silver and stainless steel

Standard finishes

Nickel satin, brass

Cylinder mechanism

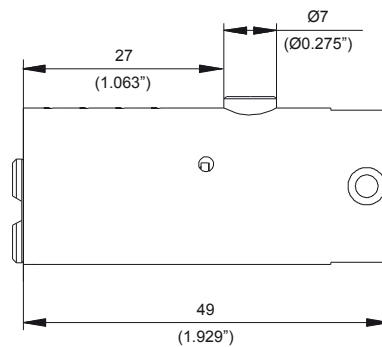
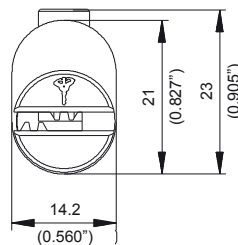
Mul-T-Lock's unique high precision pin tumbler system. Pick and drill resistant for High Security needs.

Keys

Reversible nickel silver key with plastic key head and colored insert for identification. Also available in all nickel silver.

Cylinder options

- Classic, Interactive® platforms
- Keyed different, keyed alike
- Master keyed
- '3 IN 1' (changeable combination)



Gas Tank Lock



Application

Securing gas pipes with thread or bayonet fixing (e.g. propane gas containers, tankers, etc.)

Operation

- 45° key rotation
- Slam locking mechanism

Materials

Body and plug: brass

Pins: nickel silver and stainless steel

Standard finish

Black

Cylinder mechanism

Mul-T-Lock's unique, high precision pin tumbler system. Pick and drill resistant for High Security needs.

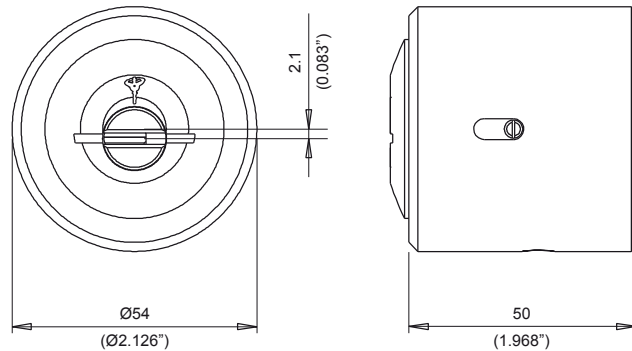
Keys

Reversible nickel silver key with plastic key head and colored insert for identification. Also available in all nickel silver.

Cylinder options

- Classic, Interactive+ platforms
- Keyed different, keyed alike
- Master keyed
- '3 IN 1' (changeable combination)

A minimum quantity is required.
Please call for pricing.



M-60 Mortise Deadlock



Application

Single point deadlocking operated by Euro profile cylinder.

Operation

2 x 360° key rotation fully extends the bolt.

Materials

Mechanism and case: steel

Bolt: brass, reinforced with steel inserts

Cylinder protector: hardened steel

Standard finishes

Nickel, shiny brass

Cover plate color: white, brown

Cylinder mechanism

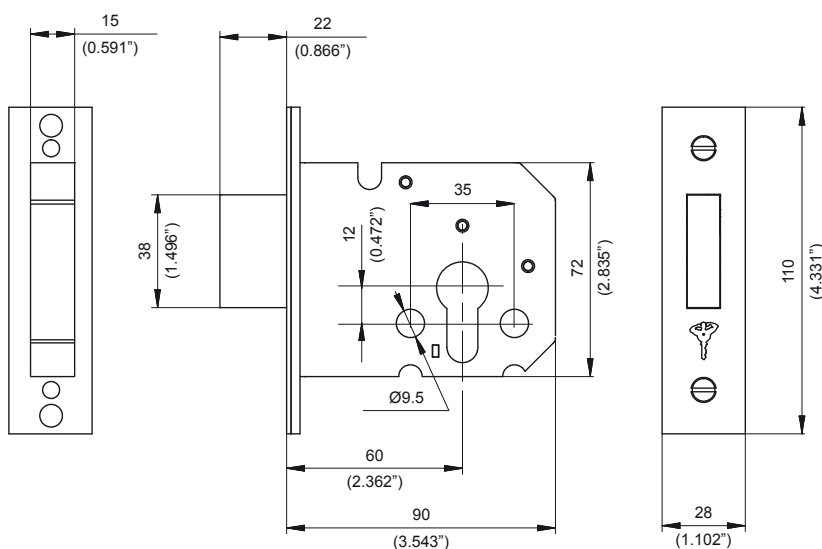
Mul-T-Lock's unique high precision pin tumbler system. Pick and drill resistant for High Security needs.

Keys

Reversible nickel silver key with plastic key head and colored insert for identification. Also available in all nickel silver

Cylinder option

Euro profile cylinder



A minimum quantity is required.
Please call for pricing.



www.mul-t-lock.com

Plunger Lock



Application

Securing cabinet sliding doors.
Suitable for wood, metal and glass doors.

Features

- Spring-loaded pop-out cylinder, complete with an interlocking butterfly tail piece
- Easily switched from a key-retaining to a non-key-retaining configuration
- Easy re-keying to the desired key combination

Operation

90° turn to lock/unlock.

Standard finishes

Nickel satin.

Cylinder mechanism

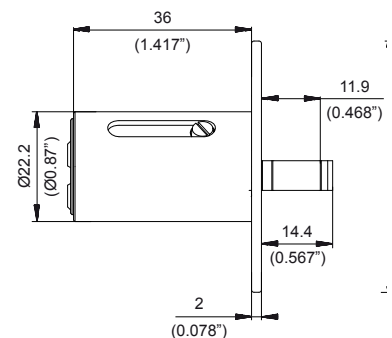
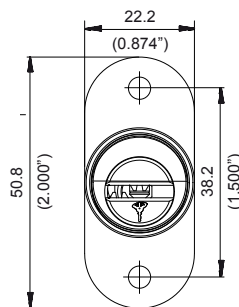
Mul-T-Lock's unique high precision pin tumbler system.

Keys

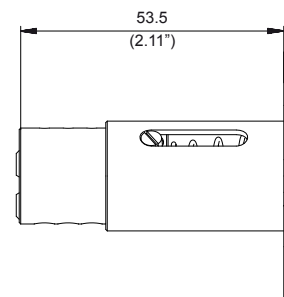
Reversible nickel silver key with plastic key head and colored insert for identification. Also available in all nickel silver.

Cylinder options

- Classic, Interactive® platforms
- Keyed different, keyed alike
- Master keyed



Locked position



Unlocked position

Hercular® Deadbolt



Double cylinder



Single cylinder with thumbturn

Application

High Security deadbolt system for commercial and residential doors.

Operation

90° key rotation throws the bolt 1" toward the frame, interlocking two hardened ball bearings with the strike to increase jimmying resistance.

Materials

Ring and cylinder: solid brass
Bolt anti drilling ring: hardened steel
Strike: steel
Pins: nickel silver and stainless steel

Standard finish

Nickel chrome matt, nickel chrome, PVD

Special finish

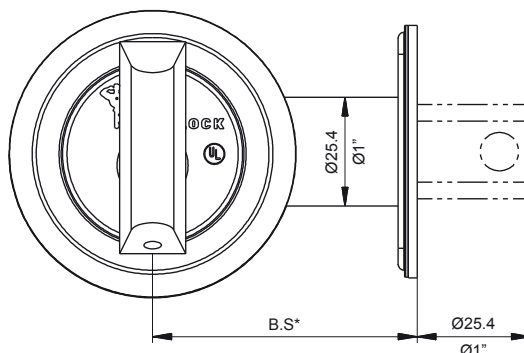
Antique brass, 10B

Lifetime finishes

US3, US26, US26D, US5A, US10B6

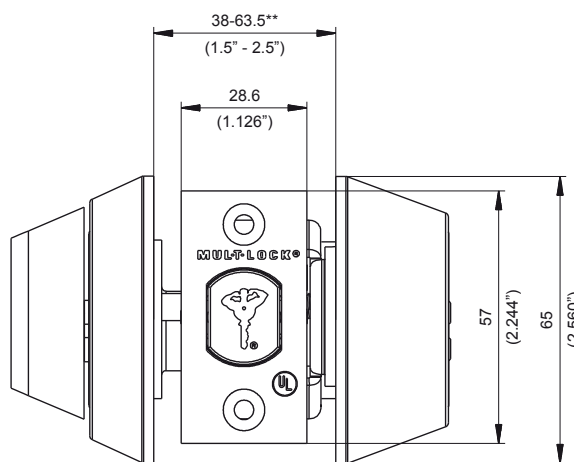
Additional features

- Suitable for two backsets, no need for different parts.
- Easy and friendly to install.
- Easy conversion between standards and drive-in.
- The changeable faceplate has an expanded angle for installation on bevelled doors.
- Supplied as standard with 1" (25 mm) throw.
- Optional as double or single cylinder.
- Thumbturn tail self-adjustable to door thickness.
- Option for captive key deadbolt
- Thumbturn can be set horizontally or vertically in locked position.



	B.S*
Inch	2 ³ / ₈
mm	60
Inch	2 ³ / ₄
mm	70

*Adjustable backset



**Door thickness (spacers required for doors less than 38 mm thick)



www.mul-t-lock.com

Hercular® Deadbolt

Cylinder mechanism

Mul-T-Lock's unique, high precision pin tumbler system. Pick and drill resistant for High Security needs.

Keys

Reversible nickel silver key with plastic key head and colored insert for identification. Also available in all nickel silver.

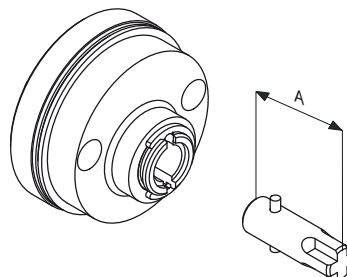
Cylinder options

- Classic, Interactive®, MT5® platforms
- Keyed different, keyed alike
- Master keyed
- '3 IN 1' (changeable combination)

Standards

- UL437 - pick and drill resistance
- UL - fire rated bolt
- Conforms to ANSI GRADE 1

Hercular thumbturn tails



Door thickness		A		Tail P/N
Inch	mm	Inch	mm	
Up to 2	Up to 50.8	0.92	23.5	22900271
2 - 2.5	50.8-63.5	1.22	31	22900275
2.5 - 3	63.5-76.2	1.5	38.5	22900276

Captive deadbolt



Can be altered by the user to function as a double or single cylinder deadbolt.

Cronus



Application

Provide protection for residential and commercial doors.

Features

- Single cylinder (with thumbturn) or double cylinder
- Robust cylinder protector
- Steel core rosettes
- Stylish design
- Easy and convenient Installation using Mul-T-Lock installation jig

Operation

High Security k.i.k. cylinder

Specifications

- Locking bolt reinforced with hardened steel insert
- Full 1" (25 mm) bolt throw
- Adjustable backset:
2 $\frac{3}{8}$ " (60 mm) or 2 $\frac{3}{4}$ " (70 mm)
- Door thickness:
1 $\frac{3}{8}$ " (35 mm) to 1 $\frac{3}{4}$ " (45 mm)

Standard finishes

PVD-Gold, polished stainless steel (US32), brushed stainless steel (US32D).

Cylinder mechanism

Mul-T-Lock's unique, high precision pin tumbler system. Pick and drill resistant for High Security needs.

Keys

Reversible nickel silver key with plastic key head and colored insert for identification. Also available in all nickel silver.

Cylinder options

- Classic, Interactive+ platforms
- Keyed different, keyed alike
- Master keyed



www.mul-t-lock.com

Showcase Lock



Application

Securing sliding glass doors of cabinets, cupboards and display cases.

Options

- Version with wide opening and fixing screw accommodates up to 8 mm glass thickness.
- Version without fixing screw accommodates up to 7 mm glass thickness.

Operation

Rotation of operating key activates locking mechanism.

Cylinder mechanism

Mul-T-Lock's unique, high precision pin tumbler system. Drill resistant for High Security needs.

Keys

Reversible nickel silver key with plastic key head and colored insert for identification. Also available in all nickel silver.

Cylinder options

- Classic, Interactive® platforms
- Keyed different, keyed alike
- Master keyed

Top-Guard®

Application

Protective cover for rim cylinders on residential, commercial and institutional doors. Drill and attack resistant for High Security needs.

Options

Supplied with rim cylinder

Operation

360° rotation of operating key activates locking mechanism.

Materials

Escutcheon plates: hardened steel with decorative cover

Cylinder body and plug: brass

Pins: nickel silver and stainless steel

Standard finish

Nickel satin, shiny brass

Cylinder mechanism

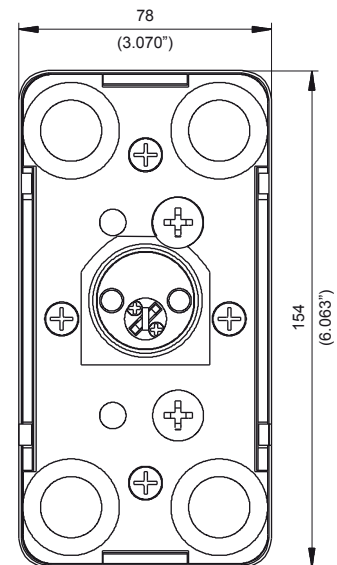
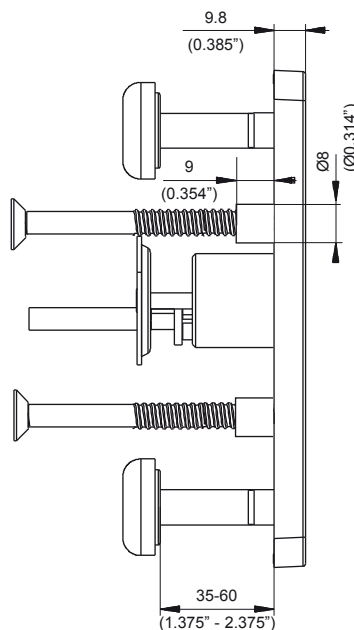
Mul-T-Lock's unique, high precision pin tumbler system. Pick and drill resistant for High Security needs.

Keys

Reversible nickel silver key with plastic key head and colored insert for identification. Also available in all nickel silver.

Cylinder options

- Classic, Interactive+, MT5® platforms
- Keyed different, keyed alike
- Master keyed



www.mul-t-lock.com



VEHICLE PROTECTION SOLUTIONS

MVP 52



Description

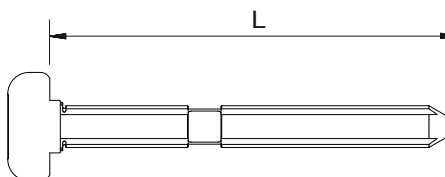
A strong and elegant mechanical gear lock, concealed under the console, that provides excellent anti-theft protection without disrupting the cabin's interior design.

Features

- High Security Mul-T-Lock cylinder
- May be customized to fit many different types of vehicles
- Fits both automatic and manual transmissions
- Bolt made of hardened steel alloy
- Powerful attack resistance
- Bolt holder for storing bolt when driving
- Designed to blend with vehicle interior

Options

- Electromechanical version with internal micro-switch, that can be connected to an electronic security system – such as immobilizer
- Key retaining in the disarmed status
- Different bolt lengths



L	
mm	Inch
130	5.1
160	6.3
180	7.1
200	7.9
220	8.7
230	9

MVP 45



Description

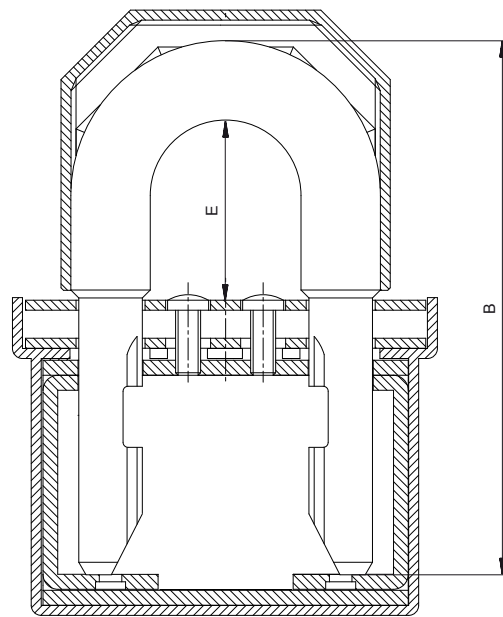
A visible, top-mounted gear lock

Features

- High Security Mul-T-Lock cylinder
- May be customized to fit many different types of vehicles
- Fits both automatic and manual transmissions
- Convenient 45° key insertion

Options

- Electromechanical version with internal micro-switch, that can be connected to an electronic security system – such as immobilizer
- Key retaining in the disarmed status
- Different locking shackle dimensions



E (clearance)		B	
mm	Inch	mm	Inch
32	1.3	94.5	3.7
42	1.6	104.5	4.1
48	1.9	110.5	4.3
58	2.3	120.5	4.7
85	3.3	147.5	5.8
102	4.0	164.5	6.5

MVP 22

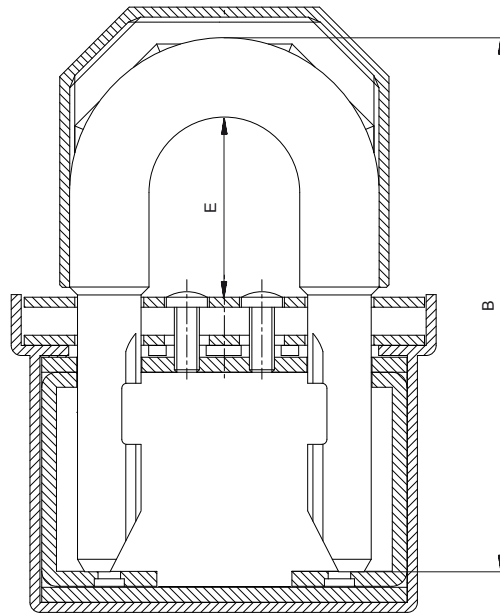


Description

A visible, top-mounted gear lock

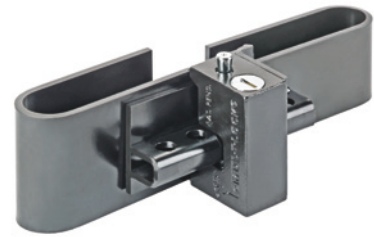
Features

- High Security Mul-T-Lock cylinder
- May be customized to fit many different types of vehicles
- Fits both automatic and manual transmissions
- Shackle made of hardened steel alloy
- Hardened steel housing
- Decorative plastic cover – used as shackle holder when driving
- Options
- Different locking shackle dimensions
- Choice of shackle clearances



E (clearance)		B	
mm	Inch	mm	Inch
32	1.3	94.5	3.7
42	1.6	104.5	4.1
48	1.9	110.5	4.3
58	2.3	120.5	4.7
85	3.3	147.5	5.8
102	4.0	164.5	6.5

Container Lock



Description

A robust new High Security lock, specially developed to protect valuable cargos transported and/or stored in containers, by securing the vertical locking bars on the container doors.

Features

- Security grade 6 - the highest in the EN 12320 standard
- Based on Mul-T-Lock's extra-tough, High Security HaspLock
- High Security Mul-T-Lock cylinder
- Robust, heavy-duty structure
- Irremovable key-retaining locking pin
- Reliable mechanism
- Dust cover for cylinder
- Flexible adjustment system, for fitting different containers

Options

- Fits storage containers, cargo containers and container trucks
- Available in different dimensions
- Keyed different, keyed alike or master keyed



ELECTRONIC DOOR SOLUTIONS

CLIQ® Cylinder



Function

The electromechanical CLIQ cylinder is used in combination with the CLIQ key giving it the ability to collect and store information about when it is accessed and with which key. In addition, the cylinder stores a list of authorized and unauthorized CLIQ keys to ensure only enabled keys have access.

Applications

The CLIQ cylinder is based on Mul-T-Lock's High-Security mechanical platforms Interactive+ and MT5®. It is available in a wide range of cylinder applications including, Euro (double or single), rim, mortise, kik, padlocks, switch cylinder and more.

Features

- Audit trail
 - Standard memory: 100 events
 - Extended memory: 1000 events

Specifications

- IP54
- Temperature range: -20°C - 70°C
- Encrypted (3DES) communication between cylinder and key/c-key
- Available in a variety of finishes
- Minimum length: 33 mm (Euro model)
- Power supplied via the CLIQ key's embedded battery

CLIQ® - Waterproof Padlock



Function

Designed for extreme environmental conditions, the CLIQ Waterproof Padlock, is ideal for applications that require durability and protection against the elements. It is also embedded with micro-technology that collects information about who, when and where the padlock has been accessed to provide you with complete Audit Trails of activity.

- Available in two shackle versions:
 - Stainless steel for maximum corrosion resistance
 - Hardened steel for protection against severe physical attacks
- Features key retaining design
- Attached weather-seal cap protects against water

Applications

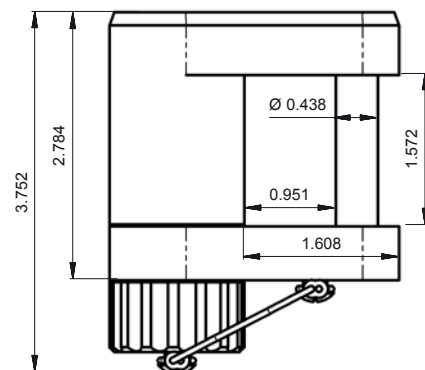
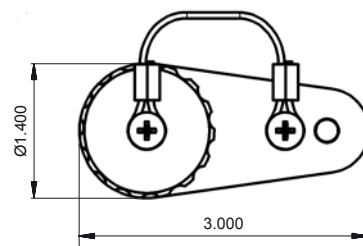
CLIQ Waterproof Padlock cylinder is based on Interactive+, Mul-T-Lock's High-Security mechanical platform.

Features

- Audit trail:
 - Standard memory: 100 events
 - Extended memory: 1000 events

Specifications

- IP67, IPx9K
- Temperature range: -25°C - 85°C
- Encrypted (3DES) communication between cylinder and key/c-key
- Available with Interactive+ CLIQ only
- Mechanical combination limitation: Impossible to use D5
- Available with 8 mm (5/16") or 11 mm (7/16") shackle
- Industrial design: casting processes for stainless steel can cause variations to finish
- Power supplied via the CLIQ key's embedded battery
- Optional: can be supplied with a mechanical cylinder



CLIQ® - Quartz+ Key



Function

Used in combination with the CLIQ cylinder, the electromechanical CLIQ Quartz+ Key can be programmed directly with authorizations and time profiles. The key also collects usage information to create complete access audit trails.

Application

The CLIQ Quartz+ Key is based on Mul-T-Lock's High-Security mechanical platforms Interactive+ and MT5®.

This key is recommended for use with CLIQ Remote Programming Devices.

Features

- Schedule: 32 week-based time intervals
- Audit trail: 1000 events
- Color-coded LED indicators:
 - Green: authorized
 - Red: unauthorized
 - Red-green-red: out of schedule
 - Blinking red: low battery
- Supports remote programming of authorizations and scheduling

Specifications

- IP57
- Temperature range: -10°C - 60°C
- Encrypted (3DES) communication between C-key and software
- Encrypted (3DES) communication between C-key and cylinder
- Powered by a CR2032 3V lithium battery, which is easily replaced
- Battery lifetime: 2 years or 20,000 operations
- Design: Black with pink inserts

CLIQ® - Quartz and QuartzXT Key



Function

Used with the CLIQ cylinder, the electromechanical CLIQ Quartz Key collects access information for complete audit trails. It can also be programmed to follow specific time schedules.

Application

The CLIQ Quartz Key is based on Mul-T-Lock's High-Security mechanical platforms Interactive+ and MT5®

The key comes in two options depending on your selected system:

- Quartz Key – used with the CLIQ system
- QuartzXT Key – used with the CLIQ Remote system

Features

- Schedule: 32 week-based time intervals
- Audit trail:
 - Quartz Key: 130 events
 - QuartzXT Key: 1000 events
- Color-coded LED indicators:
 - Green: authorized
 - Red: unauthorized
 - Red-green-red: out of schedule
 - Blinking red: low battery

Specifications

- IP57
- Temperature range: -10°C - 60°C
- Encrypted (3DES) communication between C-key and software
- Encrypted (3DES) communication between C-key and cylinder
- Powered by a CR2032 3V lithium battery, which is easily replaced
- Battery lifetime: 2 years or 20,000 operations
- Design:
 - Quartz: Blue with yellow inserts
 - QuartzXT: Black with purple inserts

CLIQ® - Control Key (C-Key)



Function

The CLIQ Control Key (C-Key) manages the electronic communication provided by the CLIQ system. It provides users secure access to the system software and the ability to transfer information between the software and the cylinders.

Applications

Each CLIQ system must have at least one C-Key, referred to as the Master C-Key (MCK). The MCK is used to transfer information from CLIQ cylinders to the software and not to open them. For systems with more than one administrator, it is possible to utilize additional C-Keys, also referred to as a Normal C-Key (NCK).

Features

- Update key authorization lists within cylinders
- Transfers audit trail information from cylinder to software
- Facilitates secured access to the software

Specifications

- IP57
- Temperature range: -10°C - 60°C
- Encrypted (3DES) communication between C-key and software
- Encrypted (3DES) communication between C-key and cylinder
- Powered by a CR2032 lithium battery; the battery is easily replaced
- Battery lifetime: 2 years
- Design:
 - MCK: Black with red inserts
 - NCK: Black with red and yellow insert

CLIQ® Remote - Mobile Programming Device



Function

Using a cellular phone or computer as a modem, the CLIQ Remote Mobile Programming Device (MPD) allows you to program Interactive+ CLIQ and MT5® CLIQ keys on-the-go.

Features

- Makes authorization changes in Quartz+ keys
- Actions time-profile changes in Quartz+ and QuartzXT keys
- Retrieves audit trails from Quartz+ and QuartzXT keys
- Revalidates keys
- Automatically syncs keys' time settings
- Provides visual and audio indicators of operational status and activity progress

Specifications

- Powered by 4 x AAA batteries
- IP42
- Connection via cellular telephone:
 - Communication to cellular telephone via Bluetooth or USB cable
 - Connects to conventional cellular telephone models without the need for software installation
- Connection via computer:
 - USB connection between Mobile PD and computer
 - Uses a simple application as a bridge for network connections
 - Can be powered through the USB cable

CLIQ® Remote - Wall Programming Device



Function

Embedded with its own IP address, the online CLIQ Remote Wall Programming Device allows users to remotely program Interactive+ and MT5® keys.

Features

- Makes authorization changes in Quartz+ keys
- Actions time-profile changes in Quartz+ and QuartzXT keys
- Retrieves audit trails from Quartz+ and QuartzXT keys
- Revalidates keys
- Automatically syncs keys' time setting
- Provides visual and audio indicators of operational status and activity progress
- Updates CLIQ key's firmware

Specifications

- IP42
- Power supply:
 - 7-24 V AC/DC
 - or
 - Power over Ethernet (PoE) – class 1 IEEE 802.3 af.
(Supply must be LPS approved)

CLIQ® - Web Manager Software

Function

A web-based software program, CLIQ Web Manager is used to manage the CLIQ Remote system.

User-friendly and intuitive, system administrators use it to remotely manage the day-to-day functionality of the CLIQ Remote system.

Applications

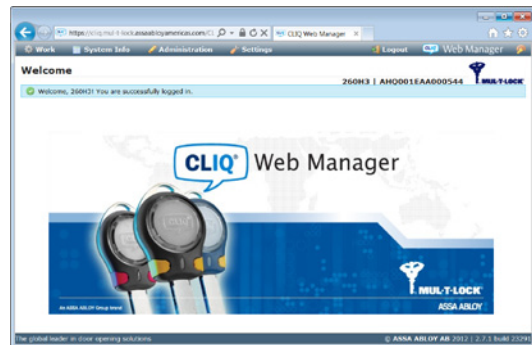
As a web-based solution, the CLIQ Web Manager provides access to the system's database from any computer with an Internet connection and has been specifically designed to handle large, decentralized systems.

Features

- Secure login via a control key and a PIN code
- Advanced search options
- Manages and creates:
 - Access permissions
 - Audit trails — including activities from remote devices
 - Time-based authorization
 - Recurring validation
 - Reports
- Supports remote programming device management
- Enables system grouping into manageable domains
- Allows remote key programming
- Key and personnel management

Specifications

- Web browser: Internet Explorer 7 and up
- Highly secured connection (SSL)
- Available in multi-language versions
- License options are per system size



CLIQ® - Manager Software

Function

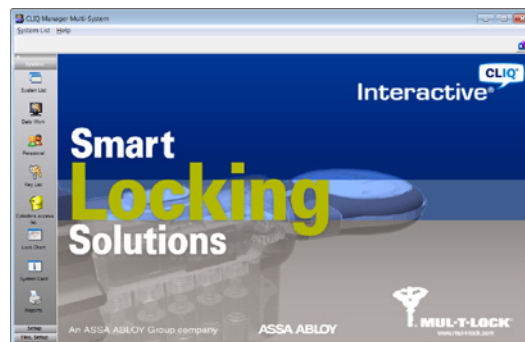
Locally installed CLIQ Manager software is used for the day-to-day management of the CLIQ system. With it, system administrators can perform a variety of tasks based on the specific needs of their environment.

Features

- Secure login via a control key and PIN code
- Manages and creates:
 - Access permissions
 - Audit trails
 - Time-based authorizations
 - Reports
- Key and personnel management

Specifications

- Installation options:
 - Local installation
 - Centralized database
- OS: MS Windows 2000/XP/ VISTA/Windows 7
- Hardware requirements: MS Windows compatible PC, Pentium IV-1,5 GHz, 50MB free hard disk memory, 512 MB RAM
- Licensing options:
 - CLIQ Manager 50: One CLIQ system with up to 50 CLIQ elements in the system
 - CLIQ Manager 200: One CLIQ system with up to 200 CLIQ elements in the system
 - CLIQ Single Manager: One CLIQ system with unlimited quantity of CLIQ elements
 - CLIQ Multi System Manager: Multiple CLIQ systems with an unlimited quantity of CLIQ elements





Function

A CLIQ key with a transponder for electronic access control systems;
Allows users to conveniently use a single all-in-one key for opening both electromechanical cylinders and doors secured by RFID access control systems.

Applications

Facilitates installation and use of electromechanical platforms in apartment and office buildings, seniors' homes and other premises secured with RFID access control systems.

Recommended for new applications that combine a mechanical Mul-T-Lock platform, and an Interactive+ CLIQ®/MT5® CLIQ® system, with access control solutions, such as Mul-T-Lock's ProQsimity®.

Features

- Key head may incorporate round sticker transponders.
- Compatible with mechanical Mul-T-Lock platform Interactive+, as well as the electromechanical Interactive+ CLIQ/MT5® CLIQ®.
- Compatible with electronic RFID access control systems, such as Mul-T-Lock's ProQsimity®.

Specifications

- Users can design their own SynerCLIQ cover sticker.
- Transponder dimensions: 22 mm diameter



Transponder

CLIQ® - Local Programming Device



Function

The CLIQ Local Programming Device (PD) is used to connect CLIQ keys and cylinders to the software (CLIQ Manager and/or CLIQ Web Manager), via secure communication.

Features

- Provides secure access to the CLIQ system software
- Reads and uploads audit trails from CLIQ keys
- Updates CLIQ Keys with the latest authorizations and time schedules
- Uploads tasks from CLIQ software to the C-Key(s)

Specifications

- Computer connectivity via USB or serial connection
- Power supply:
 - Powered through the USB cable
 - 9V battery when using serial connection
- Compatible with MT5 CLIQ / Interactive+ CLIQ keys

ProQsimity® Offline



Description

Offline RFID electronic lock

Function

Manages multiple door access, with an easy-to-use portable programmer and encoded, contact-less electronic cards.

Applications

Access control for commercial and institutional facilities, including offices, hospitals, factories, schools, sports clubs and more.

Features

- Offline system. No wiring required.
- Simple operation
- System management through easy-to-use software
 - Authorizations
 - Time schedules
 - Daylight savings time and holidays
 - Deletion and replacement of lost tags
 - Audit trails
- Up to 64,000 user cards and up to 64,000 doors per system

Options

- Handles: SENA, DELTA, ARCO
- Various distances between axes (70 mm-105 mm)
- Spindle: 7 mm, 8 mm, 9 mm
- Various cylinder applications: Euro, Swiss and oval
- May be installed with or without cylinder
- Cylinder can be visible or hidden
- Privacy feature

Finishes

- Satin chrome
- PVD polish brass

Specifications

- 13.56 MHz, MIFARE® RFID technology
- Contact-less cards
- 2 possible memory configurations:
 - 1,500 users and 600 events in the event log
 - 1,000 users and 1,000 events in the event log
- 2-4 cm read/write distance
- Powered by 3 AAA batteries

ProQsimity® Standalone



Description

Standalone RFID electronic lock

Function

Manages access to a single door, with an easy-to-use programming card and contact-less electronic cards.

No need for a programming device or software.

Applications

Access control for residential and commercial uses.

Features

- Standalone system. No wiring required.
- Simple operation
- System management through easy-to-use programming card
- Up to 500 user cards

Options

- Handles: SENA, DELTA, ARCO
- Various distances between axes (70 mm-105 mm)
- Spindle: 7 mm, 8 mm, 9 mm
- Various cylinder applications: Euro, Swiss and oval
- May be installed with or without cylinder
- Cylinder can be visible or hidden

Finishes

- Satin chrome
- PVD polish brass

Specifications

- 13.56 MHz, MIFARE® RFID technology
- Contact-less cards
- 2-4 cm read/write distance
- Powered by 3 AAA batteries

EDS

ProQsimity® ANSI



Function

Manages multiple door access, with easy-to-use portable programmer and encoded contactless electronic cards

Applications

Access control for commercial and institutional facilities, including offices, hospitals, factories, assisted living facilities, schools, sports clubs and more.

Features

- Easy installation - no wiring required.
- Simple operation
- System management through easy-to-use software
 - Authorizations
 - Time schedules
 - Daylight savings time and holidays
 - Deletion and replacement of lost tags
 - Audit trails
 - 4 operation modes
 - Standard
 - Open
 - First person in
 - Dual user (available only in the wireless version)
- Up to 64,000 user cards and up to 64,000 doors per system

Options

- Handles: SENA, Flat
- Privacy feature
- May be installed with or without cylinder
 - Cylinder options:
 - Classic, Interactive+, MT5®, 7x7, Integrator platforms
 - Keyed different, keyed alike
 - Master keying
 - 3 in 1 (changeable combination)
 - TLO
- Internal / external models available
- Cylindrical version
 - 2¾" (70mm) backset – standard
 - 2⅝" (60mm) backset - available
- Mortise version:
 - Automatic deadbolt – standard
 - Latch only version - available

ProQsimity® ANSI

Finishes

- Stainless steel, satin chrome, PVD polished brass

Specifications

- 13.56 MHz, HID iClass® & MIFARE® RFID technology
- Contactless RFID cards /tags / fobs / silicon & disposable wristbands
- 2 possible memory configurations:
 - 1,500 users and 600 events in the event log
 - 1,000 users and 1,000 events in the event log
- 2-4 cm read/write distance
- Powered by common batteries
- Conforms to ANSI grade 1
- ANSI A115 prep modified for through-bolts
- ADA-compliant levers
- Shabbat-compliant

ProQsimity® Cabinet Lock (E-Motion)



Function

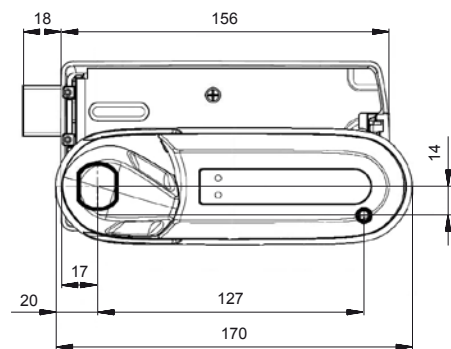
E-Motion is an electronic lock for lockers which may be integrated into the ProQsimity system (OFFLINE or Update On Card).

Features

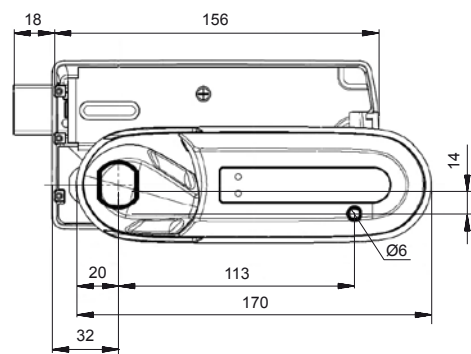
- Simple operation
- System management through easy-to-use software
- 2 Operation modes:
 - High traffic:
All lockers are available to all users. Any user can select a free locker and lock it by presenting his/her card.
 - User assigned:
Through the E-Motion or ProQsimity software, a specific locker can be assigned to one or more users. This mode of operation supports various access control features: authorizations, time schedules, daylight savings time and holidays, cancellation and replacement of lost tags, audit trail, temporary blockage, etc.

Specifications

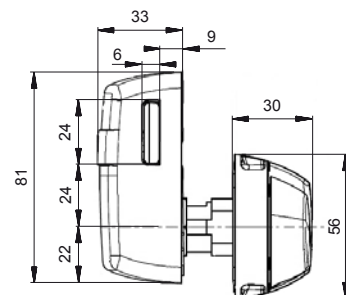
- Reader module:
 - 13.56 MHz, MIFARE® RFID technology
 - ISO 14443A
 - Contact-less cards (MIFARE Classic 1K, 4K and ULTRALIGHT)
 - Reading range: 10 mm with standard credentials
 - LED indications (access authorized, access denied, low battery, etc).
 - Compatible with mobile telephone NFC
- Control unit:
 - Non-volatile memory
 - Up to 1500 users
 - Up to 1000 events recorded in audit trail
 - Real-time clock and calendar
- Operating conditions:
 - Temperature range (external side): -20°C-70°C
 - Humidity: up to 85% without condensation
 - Fire certificate: 30', 60' and 90' UNFEN 1634:2000
 - IP55
- Battery module:
 - Type: 3 x LR03 AAA 1.5V alkaline batteries
 - Estimated duration: 20,000 operations or 3 years
 - Changing the batteries is easy and simple; no need to disassemble the lock.



Right handed door - short



Right handed door - long



Dimensions

Dimensions

- Door thickness (3 models):
 - 2-12 mm
 - 12-15 mm
 - 15-25 mm
- "Long" or "Short" footprint



www.mul-t-lock.com

SynerKey

Function

A mechanical key with a key head that can house transponders for electronic access control systems; allows users to conveniently use a single all-in-one key for opening both mechanical cylinders and doors secured by RFID access control systems.

Applications

Facilitates installation and use of mechanical platforms in apartment and office buildings, seniors' homes and other premises secured with RFID access control systems. Recommended for new applications that combine a mechanical Mul-T-Lock platform with access control solutions, such as Mul-T-Lock's new ProQsimity®.

Features

- Key head may incorporate round or capsule transponders.
- Compatible with all mechanical Mul-T-Lock platforms: 7x7®, Classic, Integrator®, Interactive+, MT5®.
- Compatible with electronic RFID access control systems, such as Mul-T-Lock's ProQsimity®.

Specifications

- Colors of plastic key head covers: black, blue, red, green, orange, yellow
- Transponder dimensions:
 - Round transponder: 22 mm diameter
 - Capsule transponder: 2 mm diameter, 10 mm length



AC-D31 & AC-C31

Keypad Controller



Function

Standalone access control unit, without computer connection, operated by personal code

Application

Access control for indoor use

Models

- MTL-AC-D31
 - 3x4 keypad configuration
 - Dimensions (mm): 24(D) x 75(W) x 122(L)
- MTL-AC-C31
 - 2x6 keypad configuration
 - Dimensions (mm): 18(D) x 42(W) x 130(L)

Features

- Protection level 1
- Made of white plastic
- Simple programming through the keypad
- LED guided menu
- Up to 500 users
- 3 user levels
- 3 security levels
- Internal buzzer

Specifications

- Power supply: 12 - 16VDC
- Block interface with 4 wire connections
- Relay outlet to electric lock type C: 3.5A
- Relay outlet type C: 1A

AC-Q41H & AC-Q41HB

Anti-Vandal Keypad Controller



Function

Damage-proof standalone access control unit, without computer connection, operated by personal code

Application

Access control for indoor and outdoor use

Models

- MTL-AC-Q41H
 - With keypad automatically heated in low temperatures
- MTL-AC-Q41HB
 - With keypad automatically heated in low temperatures and lighted at night

Features

- Protection level 2
- Made of metal
- Damage-proof case
- Case secured by optical controller
- 3x4 keypad configuration
- Simple programming through the keypad
- LED guided menu
- Up to 500 users
- 3 user levels
- 3 security levels
- Internal buzzer

Specifications

- Dimensions (mm): 22(D) x 76(W) x 120(L)
- Temperature range (°C): -20 to +63
- Power supply: 16-24 or 12-24VDC
- Rear interface with 10 wire connections
- Relay outlet to electric lock type C: 3.5A
- Relay outlet type C: 1A
- 2 inlet connections

EDS

ELMG 600 Electromagnet

Function

An electromagnetic lock

Application

Locking doors

Models:

- ELMG 600 - with built-in LED indication of lock status
- ELMG 600S - no LED indication of lock status
- ELMG 600T - with built-in delayed egress control point
- ELMG 600E - embedded lock
- ELMG 600D - with double lock

Options

- Lock status sensor
- Door status sensor
- Timer

Specifications

- Dimensions (mm): 250(L)x43(W)x27(D)
- Holding force: 600 lbs (2700N)
- Failsafe type (power to lock)
- Power supply: 12 or 24VDC (optional)
- Operation current: 500mA@12V or 250mA@24V
- Weight: 2000g

Accessories

Variety of brackets for:

- In-swing door
- Out-swing door
- Glass door



ELMG 1200 Electromagnet

Function

An electromagnetic lock

Application

Locking doors

Models:

- ELMG 1200 - with built-in LED indication of lock status
- ELMG 1200S - no LED indication of lock status
- ELMG 1200T - with built-in delayed egress control point
- ELMG 1200D - with double lock

Options

- Lock status sensor
- Door status sensor
- Timer

Specifications

- Dimensions (mm): 267(L)x67(W)x40(D)
- Holding force: 1200 lbs (5400N)
- Failsafe type (power to lock)
- Power supply: 12 or 24VDC (optional)
- Operation current: 500mA@12V or 250mA@24V
- Weight: 4800g

Accessories

Variety of brackets for:

- In-swing door
- Out-swing door
- Glass door



EDS

Electric Strike E7



Function

An electrically operated latch lock

Applications

- Steel doors
- Wooden doors
- Aluminum doors

Features

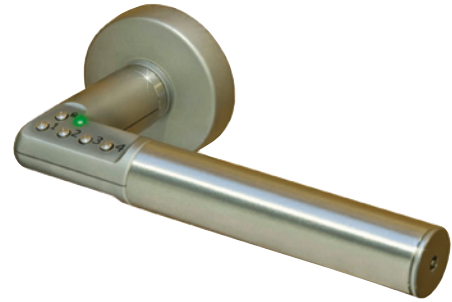
- Latch lock
- Adjustable strike
- Mechanical override option
- Fail-locked/failsafe
- Suitable for right- or left-hand doors by turning 180°
- Symmetrical
- Variety of faceplates

Specifications

- Temperature range (°C): -14 to +40
- Power supply: 8 - 16V AC/DC
- Break-in resistance: 3500N

Code-It™

Electronic Security Handle



Function

An automatic locking mechanism, built into the handle, allows the door to open with a personal code.

Applications

For indoor use. Suitable for use with most types of locking/latching products.

Features

- 2 operating modes:
 - Automatic locking
 - Manual locking
- 4 to 6 digit secret code
- Locks only from outside
- Simple operation
- Easy replacement
- Does not require an electrical outlet
- Low cost maintenance

Specifications

- For door thickness 35-80 mm
- Up to 9 separate codes
- Indication light
- Indication sound



MULTIPOINT LOCKS



4-Way Locks 231, 232



Application

Installed inside wood or metal doors to provide 4-way multi-bolt locking.

Operation

360° key rotation for deadbolt action.

Options

- Left Hand model 231
- Right Hand model 232
- Hardware colors: white, brown, shiny brass, nickel chrome

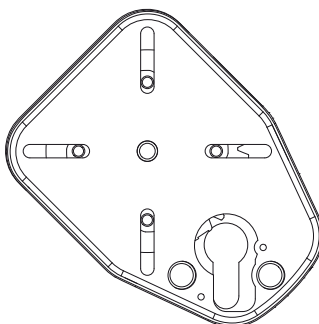
Materials

Case and mechanism: steel

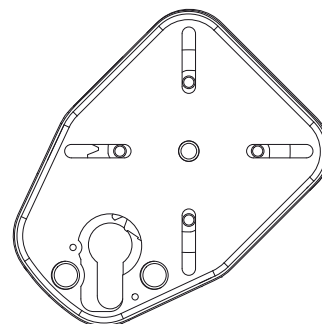
Bolts: steel (optional hardened)

Cylinder protector: hardened steel

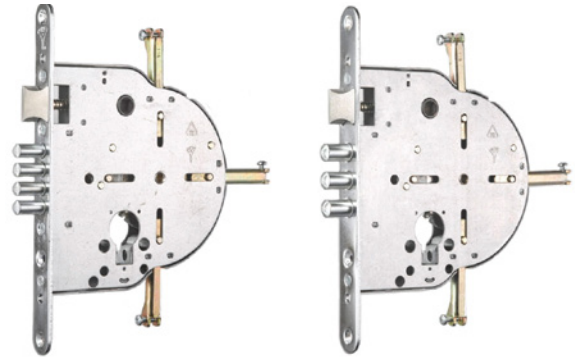
231 Left



232 Right



4-Way Locks 235, 265



Application

Installed inside wood or metal doors to provide 4-way multi-bolt locking.

Operation

- 360° key rotation for deadbolt action
- Additional travel for latch action
- Left- or right-hand applications

Options

- Standard backset: 65 mm
- Special order backsets: 75 & 85 mm
- Hardware colors: white, brown, shiny brass, nickel chrome, gold
- Can be assembled with SH300 high security hardware
- Model 235 available with $\text{ØD} = 12.7 \text{ mm}$

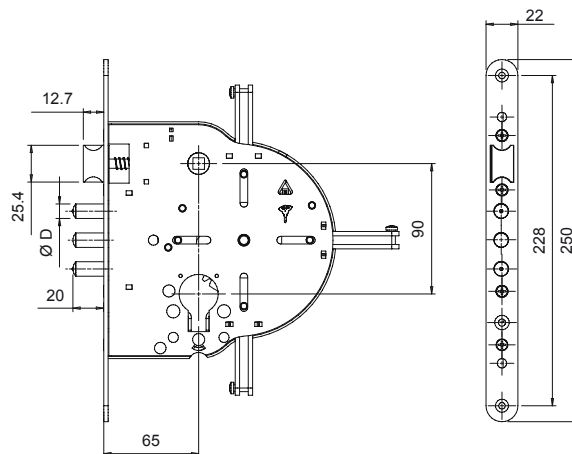
Materials

Case and mechanism: steel
Bolts: steel (optional hardened)

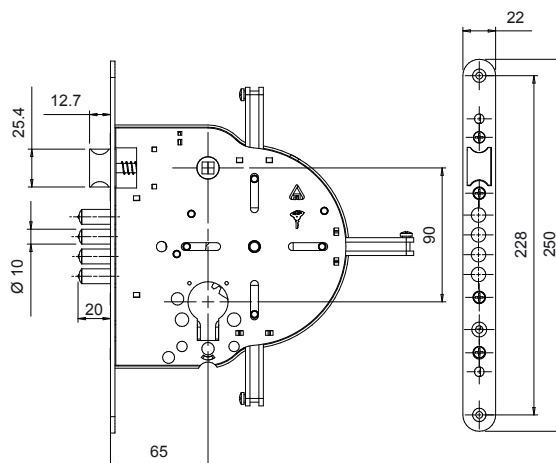
Standards

- ISI technical specification 196
- EN12209

Model 235 multipoint lock operating 6 bolts



Model 265 multipoint lock operating 7 bolts



Standard backset 65 mm

Other backsets available only with $\text{Ø}10 \text{ mm}$ bolts

Optional 8" front band to fit American hollow core metal doors

4-Way Lock 250

Application

Installed inside wood or metal doors to provide 4-way multi-bolt locking.

Operation

360° key rotation for deadbolt action.

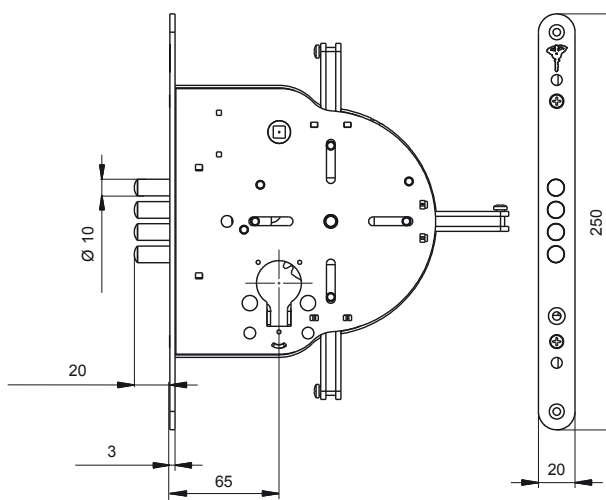
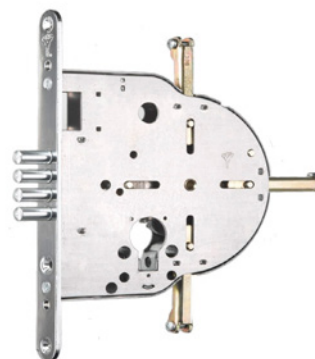
Options

- Standard backset: 65 mm
- Special order backsets: 75 & 85 mm
- Hardware colors: white, brown, shiny brass, nickel chrome, gold
- Can be assembled with SH300 high security hardware

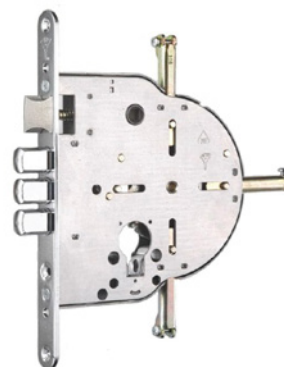
Materials

Case and mechanism: steel

Bolts: steel (optional hardened)



4-Way Lock 603



Application

Installed inside wood or metal doors to provide 4-way multi-bolt locking.

Operation

- 360° key rotation for deadbolt action
- Additional travel for latch action
- Left- or right-hand application

Options

- Hardware colors: white, brown, shiny brass, nickel chrome, gold
- Fixed outside handle

Materials

Case and mechanism: steel

Bolts: steel (optional hardened)

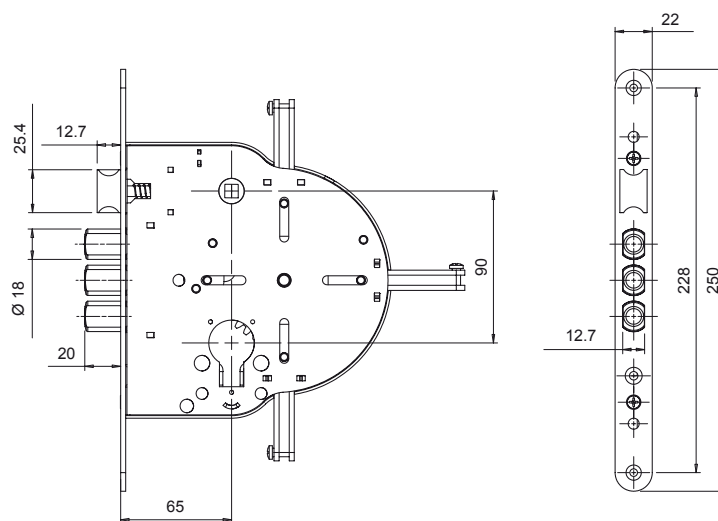
Cylinder protector: hardened steel

Additional feature

Patented 18 mm Double D shaped bolts allow installation in narrow frames, and enable use of front plate (22 mm width) to fit regular steel door types.

Standards

- ISI technical specification 196
- EN12209



MPL Series

Application

Installed inside wood or metal doors to provide 3-way multi-bolt locking

Operation

- 360°/720° key rotation for deadbolt action
- Additional travel for latch action
- Left- or right-hand application

Options

- SH300 high security hardware
- MPL210 - central lock case for steel door
- MPL211 - central lock case for wooden door

Materials

Case and mechanism: steel

Bolts: steel

Cylinder protector: hardened steel

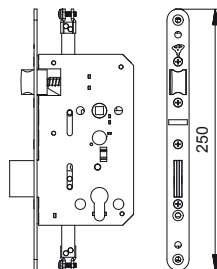
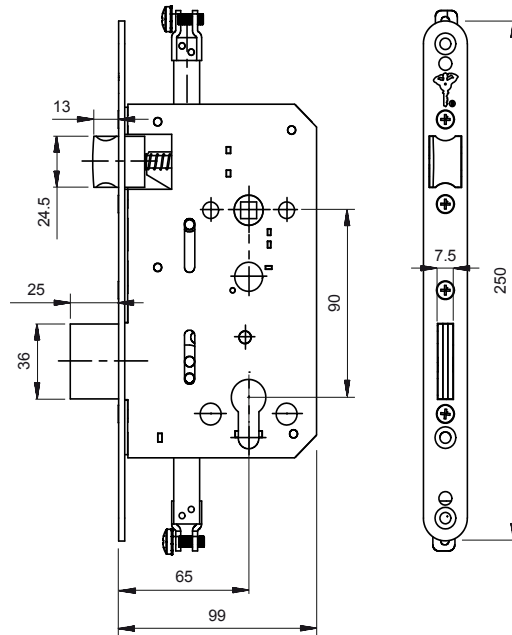
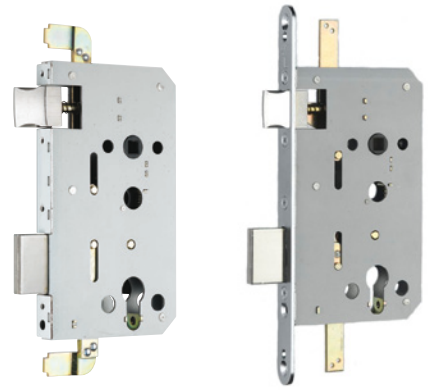
Additional features

- Lock case size 99 mm
- Square deadbolt
- Triple round deadbolts for steel and wooden doors
- Standard hardware (CC=90 mm)

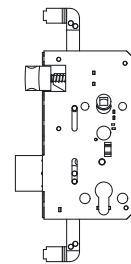
Standard

EN12209

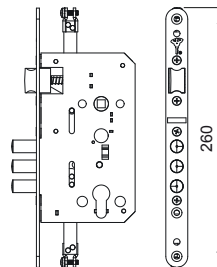
Note: for maximum security it is recommended to use Mul-T-Lock High Security escutcheons (EN grade 3 and 4)



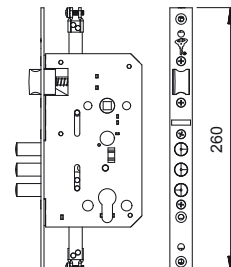
MPL 210 - P/N 26900047



MPL 211 - P/N 26900048



MPL 212 - P/N 26900251



MPL 212 - P/N 26900254



www.mul-t-lock.com

SPL Series

Application

Installed inside wood or metal doors to provide deadbolt locking.

Operation

- 360°/720° key rotation for deadbolt action
- Additional travel for latch action
- Left- or right-hand application

Options

- EN grade 3 hardware
- EN grade 4 hardware
- Fixed or moving handle

Materials

Case and mechanism: steel

Bolts: steel

Cylinder protector: hardened steel

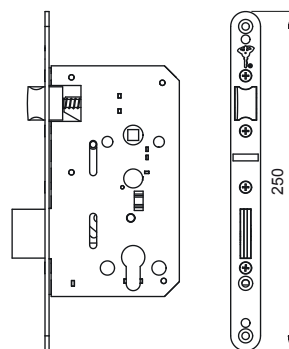
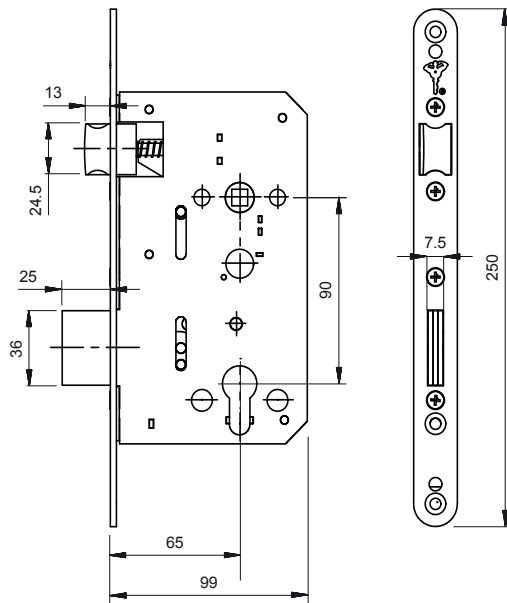
Additional features

- Square deadbolt
- Triple round deadbolts for steel and wooden doors
- Standard hardware (CC=90 mm).

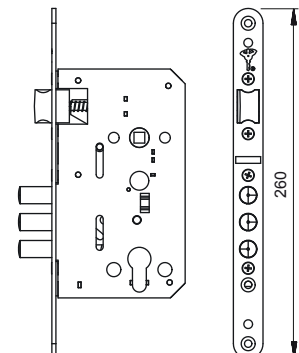
Standard

EN12209

Note: for maximum security it is recommended to use Mul-T-Lock High Security escutcheons (EN grade 3 and 4)



SPLS - P/N 26900340



SPLR - P/N 26900350

MPL415G Lock Set

Double Locking Multipoint Lock

Application

A heavy duty multipoint lock for steel doors.

Features

- 4 smart key-turns
- 41.5 mm bolt throw
- 15 locking bolts
- Geometrical locking
- Double cylinder locking
- Cogwheel central locking mechanism
- Dead-bolt latch when locked
- Operated by Euro profile cam cylinders
- Right- or Left-Hand installation

Option

Lock set includes:

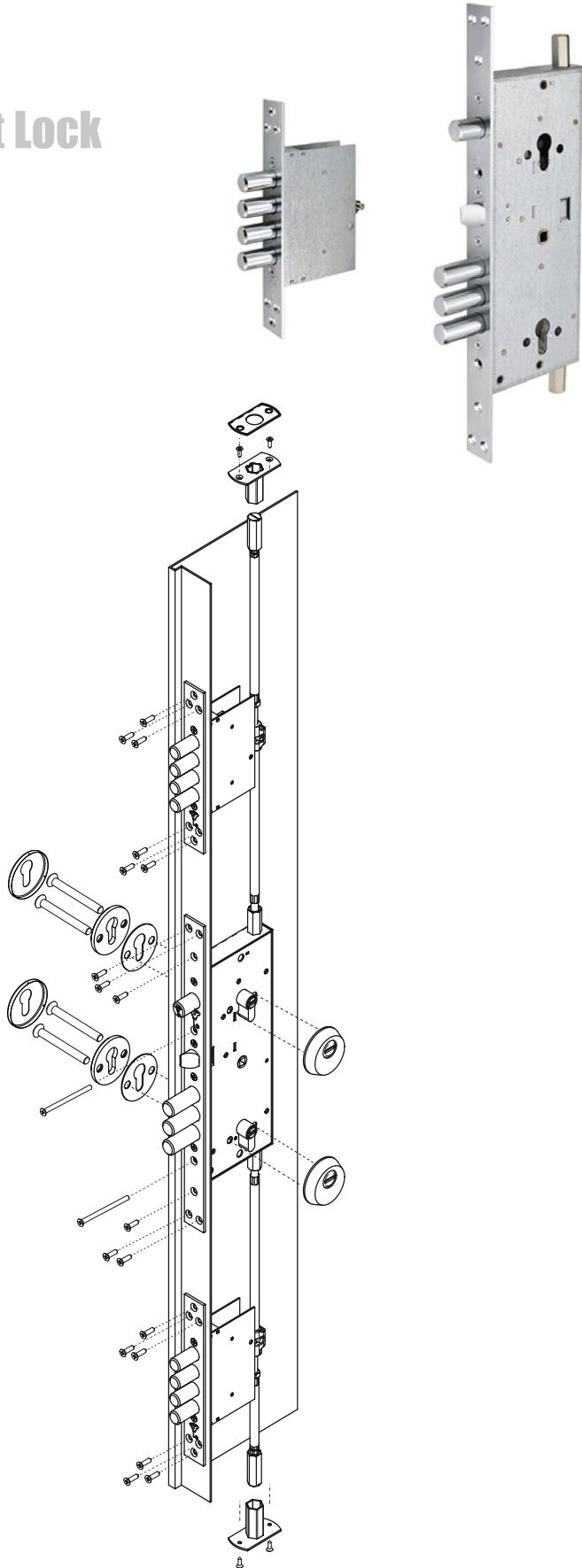
- Central lock
- Side mechanisms
- Rods
- Security escutcheons
- Hardware
- Counter strikes
- Installation instructions

Specifications

- Handle operation
- Latch Ø20 mm
- Backseat: 65 mm.
- Bolt throw: 41.5 mm
- Minimum door height - 1950 mm
- Maximum door height - 2120 mm

Finishes

Bright brass, nickel satin, nickel chrome



www.mul-t-lock.com

Mini-bars Lock

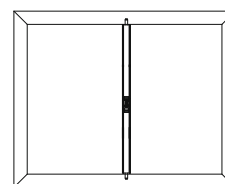
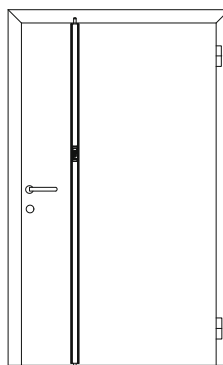
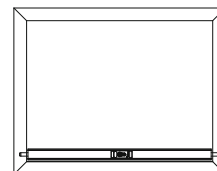
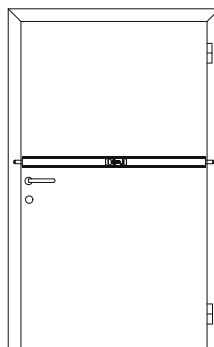
2-Point Surface Mount Locking bar

The Mul-T-Lock Mini-bars lock series is a multipoint rim lock solution for reinforcing security in standard commercial doors and windows (metal or wood). It may be used as either a primary locking solution, or as additional locking system for reinforcing vulnerable areas. The Mini-bars may be installed either horizontally or vertically, on patio and garage doors, shutters, balconies, cabinets and more.

A gear-driven mechanism provides smooth operation, making the Mini-bars lock friendly to all users, including children and elderly people. Flexible keying options (master key, keyed alike, keyed different) are available, and any of Mul-T-Lock's High Security cylinder platforms may be incorporated into the product based on the customer's preferences.

Extra hardware, available upon request, includes cylinder protectors, thumbturn knobs and various accessories. The finish of all cylinders and handle accessories is compatible with the specified lock/profile color.

The Mini-bars lock is also available with durable coatings – in white, brown, and matt black, making it suitable for most environments.



Vertical Mini-bars

Universal Application

Application

Rim lock with 2-point locking for universal applications, such as entrance doors, sliding doors, balconies and windows.

Operation

- Compatible with Mul-T-Lock Euro profile cam cylinders. (Ordered separately)
- Thumbturn operation
- Half cylinder, key operation
- Double cylinder, both sides by key operation

Options

- Available lengths:
 - 1200 mm
 - 1500 mm
 - 2000 mm
 - 2250 mm
 - 2750 mm
 - 3000 mm
 - 4000 mm

Other lengths available by special order.

- Deadbolt throw 36 mm or 85 mm, adjustable
- Cylinder length for all door thicknesses up to 85 mm, according to the model.
- Backsets:
 - 500 mm
 - 1100 mm

Available Finishes

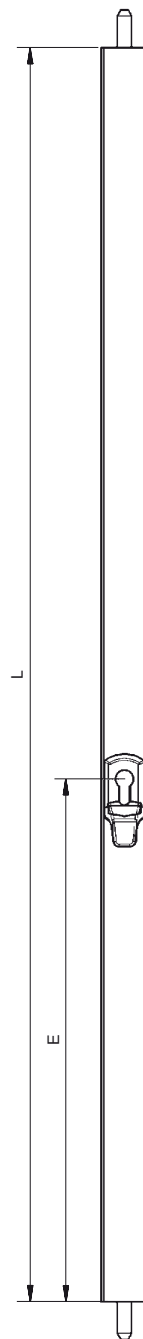
White, brown, matt black.

Special colors available on request.

For the full range of products and ordering information see Mul-T-Lock Italy Catalogue



Cylinder for lock operation



L - length
E - backset



Vertical Mini-bars EMB Series

Window Application

Application

Rim lock with 2-point locking for window applications.

Operation

Compatible with Mul-T-Lock Euro profile cam cylinder (ordered separately).

- Thumbturn operation
- Half cylinder, key operation
- Double cylinder, both sides by key operation

Options

- Available lengths:
 - 800 mm
 - 1000 mm
 - 1200 mm
 - 1500 mm
 - 2000 mm
 - 2250 mm

Other lengths available by special order.

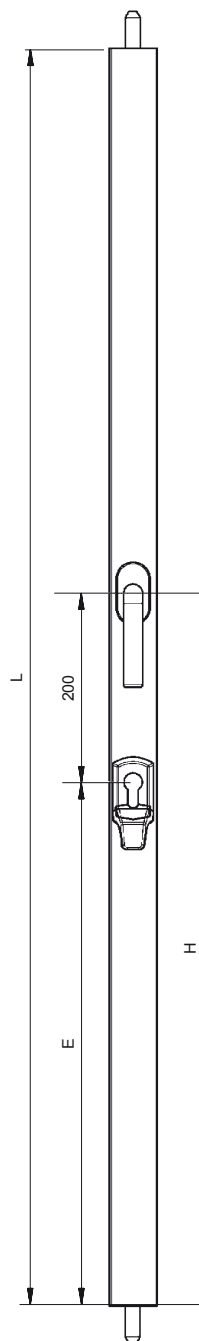
- Deadbolt throw 36 mm or 85 mm, adjustable
- Cylinder length for all door thicknesses up to 85 mm, according to the model.
- Backsets:
 - 300 mm
 - 900 mm

Available Finishes

White, brown, matt black.

Special colors available on request.

For the full range of products and ordering information see Mul-T-Lock Italy Catalogue



L - length
E - backset
H - handle height

Multipoint Locks

Vertical Mini-bars EMC Series

Handle Driven

Application

Rim lock with 2-point locking for windows and entrance doors

Operation

- Compatible with Mul-T-Lock's Euro profile cam cylinders. (Ordered separately)
- Tumbturn operation
- Half cylinder, key operation
- Double cylinder, both sides by key operation

Options

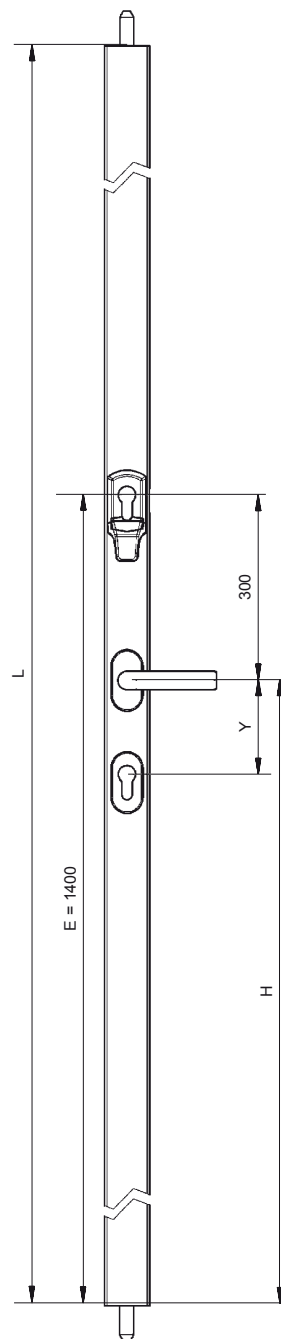
- Available lengths:
 - 2000 mm
 - 2250 mm
 - 2500 mm
- Other lengths available by special order.

- Deadbolt throw 36 mm or 85 mm, adjustable
- Cylinder length for all door thicknesses up to 85 mm, according to the model.
- Key backset:
 - 1400 mm
- Different axle bases

Available Finishes

White, brown, matt black
Special colors available on request.

For the full range of products and ordering information see Mul-T-Lock Italy Catalogue



L - length
E - backset
H - handle height
Y - handle axle base



www.mul-t-lock.com

Vertical Mini-bars EMD Series

Handle Driven (No Cylinder Locking)

Application

Surface mounted rim lock with 2-point locking for windows.

Operation

Turning handle 180° to operates both deadbolts.

Options

- Available lengths:
 - 1200 mm
 - 1500 mm
 - 2000 mm
 - 2250 mm
 - 2500 mm
 - 2750 mm
 - 3000 mm

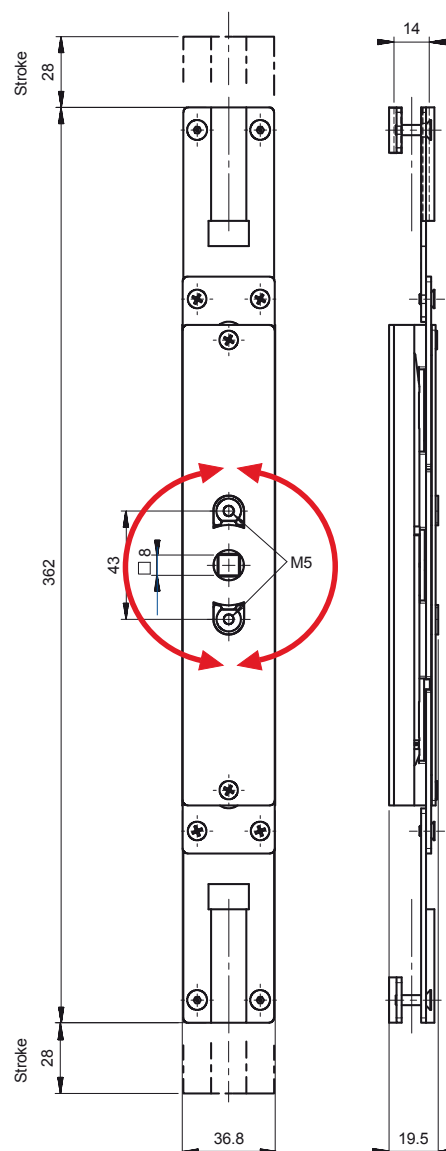
Other lengths available by special order.

- Deadbolt
 - Ø14 mm
 - 28 mm Throw
- backsets:
 - 500 mm
 - 1100 mm
- Left- or right-hand operation

Available Finishes

Anodized, white, brown, matt black
Special colors available on request.

For the full range of products and ordering information see Mul-T-Lock Italy Catalogue



Multipoint Locks

Horizontal Mini-bars 512, 513 Series



Application

Horizontal rim lock with 2-point locking.

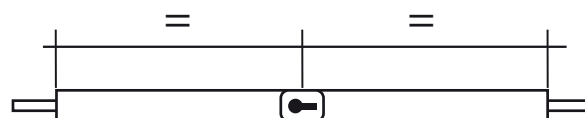
Operation

- Compatible with Mul-T-Lock's Euro profile cam cylinders. (Ordered separately)
- This product is more suitable for use with double profile cylinder. When used with a single side (Thumb turn), deadlocking is not functioning.
- Deadbolt throw 80 mm

Options

- Available lengths:
 - For central backset:
 - 2000 mm
 - 2250 mm
 - 2500 mm
 - 2750 mm
 - 3000 mm
 - 4000 mm
 - For 300 mm backset:
 - 800
 - 900
 - 1000
 - 1100
 - 1200

512 series



Central backset

513 series



300 mm backset

Available Finishes

White, brown, matt black.

Special colors available on request.

For the full range of products and ordering information see Mul-T-Lock Italy Catalogue

Mini-bars Series

Options

	Series	EME	EMB	EMC	EMD	512	513
Backset	300		•				•
	500	•			•		
	900		•				
	1100	•			•		
	1400			•			
	Central					•	
Length	800		•				•
	900						•
	1000		•				•
	1100						•
	1200	•	•		•		•
	1250						•
	1375						
	1500	•	•		•		
	2000	•	•	•	•	•	
	2250	•	•	•	•	•	
	2500	•		•	•	•	
	2750	•			•	•	
	3000	•			•	•	
	4000	•				•	
Color	Brown	•	•	•	•	•	•
	White	•	•	•	•	•	•
	Black	•	•	•	•	•	•
	Anodized				•		

Lock 700 Model

3-way Multipoint Rim Lock

Application

Heavy duty multipoint (3-way) rim lock with latch functionality. Suitable for 1.5 to 2.5 meter doors. Right-Hand or Left-Hand installation. Push or pull installation.

Operation

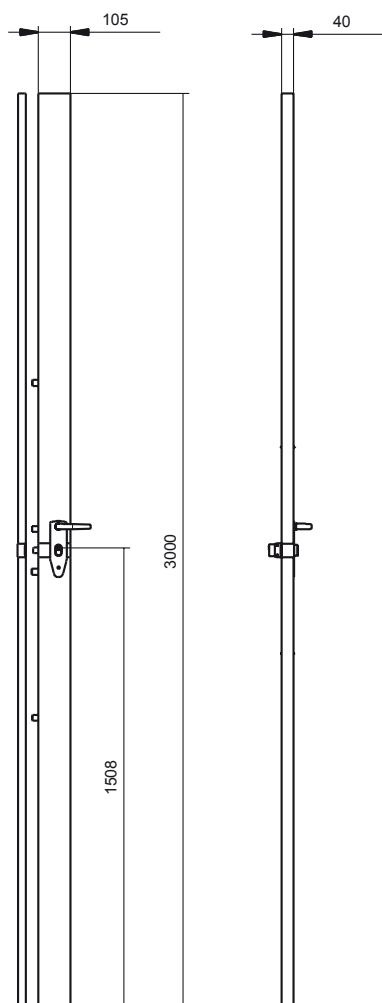
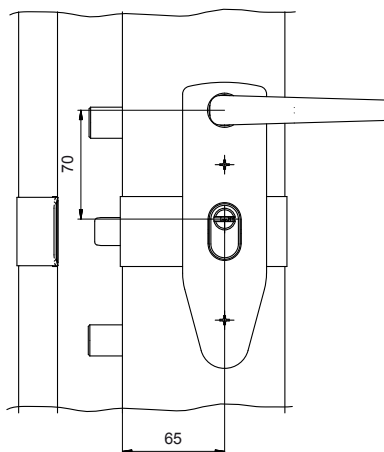
Equipped with Mul-T-Lock cylinder. 360° key rotation for dead bolt action and additional travel for latch action. Latch is reversible for Left-Hand and Right-Hand.

Materials

Case, mechanism, covers and frame: steel.
Bolts: steel (optional hardened).
Cylinder protector: hardened steel.

Standard

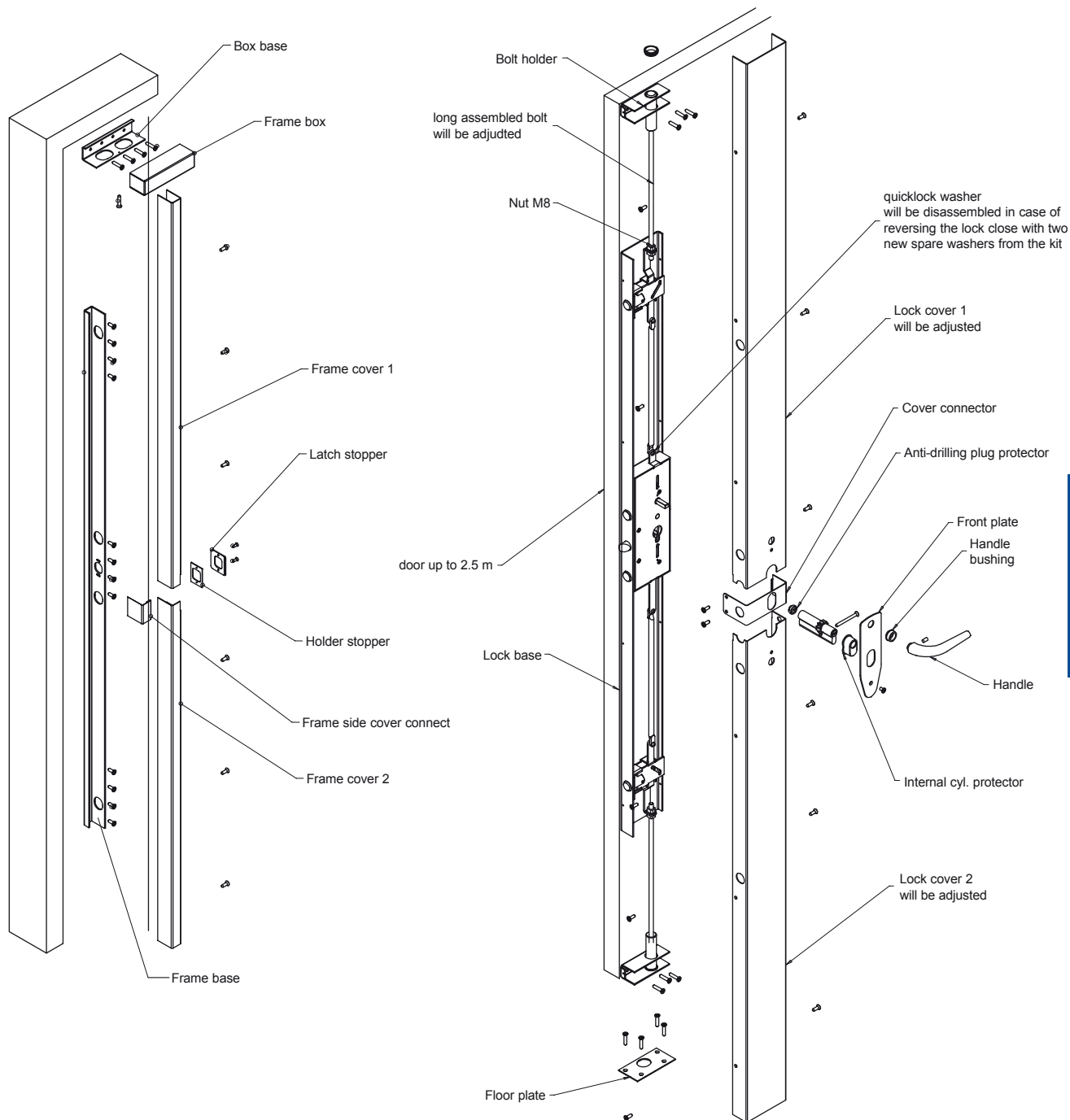
A2P★



www.mul-t-lock.com

Lock 700 Model

3-way Multipoint Rim Lock



MATRIX

Armored Doors Lock

A series of heavy-duty multipoint locks for armored doors, featuring a silent, reliable gear-based mechanism, a patented double-bit key, and a combination SIM enabling an endless number of changeable combinations.

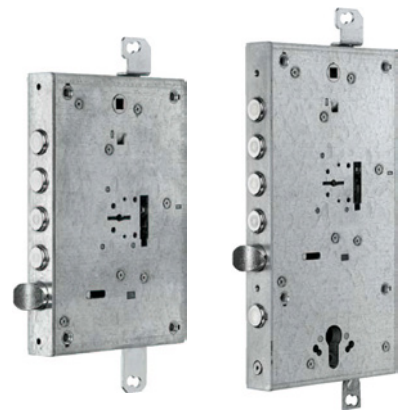
The lock combination can be changed endless number of times by performing 5 simple steps:

1. Rotate plate lock on inner side of door to OPEN position.
2. Remove the old combination SIM with a special extraction/insertion tool.
3. Insert a new combination SIM using the same extraction/insertion tool.
4. Rotate lock to CLOSE position. The lock is set to the new combination.
5. After performing the combination change process, destroy the old SIM and keys.



MATRIX

Armored Doors Lock



Function

High Security multipoint locking for armored doors

Features

- Latch functionality
- Patented double-bit, low-wear keys
- Single or double locking mechanism
- Euro profile cylinder
- Slave cylinder
- Right- or left-hand installation
- Limitless combination possibilities, enabled by replacing the combination SIM

Options

- Sealed bag containing one combination SIM
- 3 double-bit keys (length 90 mm)

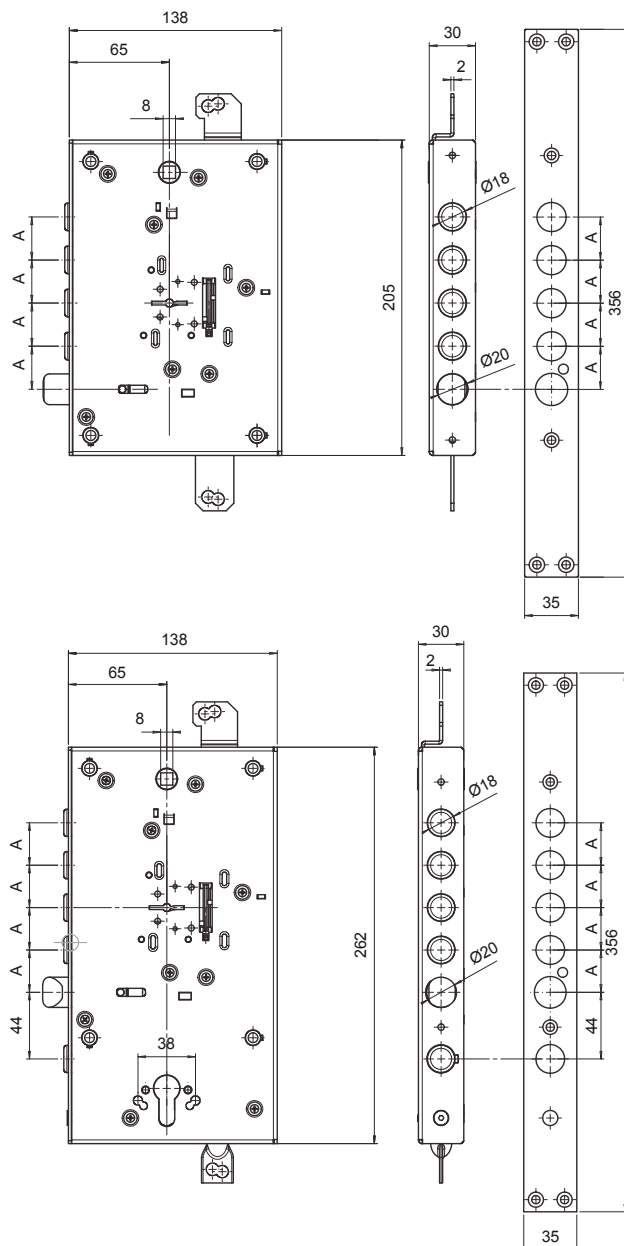
Specifications

- Handle operation
- Latch Ø20 mm
- Backseat: 65 mm
- Bolt throw: 36 mm
- Service bolt stroke: 24 mm
- Lever stroke: 20 mm.
- Bolt spacing: 28, 37 mm
- Bolt protrusion: 3, 13 mm
- 4 throws
- Variety of key lengths

For ordering information see
Mul-T-Lock Italy Catalogue

A - Bolt spacing - 28, 37 mm

S - Bolt protrusion - 3, 13 mm



OMEGA PLUS

Armored Doors Lock

A series of heavy-duty multipoint locks for armored doors, featuring a gear-based mechanism and an effective security system that relies on a selection of special keys:

Standard set of keys

The standard Omega Plus lock is supplied with a sealed envelope, containing:

- 3 triple-bit foldable keys (length 73 mm), marked by red plastic key heads with green inserts
- 1 blue duplication card for the green-insert keys
- 1 triple-bit foldable key (length 73 mm) marked by a red plastic head with a yellow insert, and a new code – which, when used, invalidates the keys with the green insert
- 1 blue duplication card for the yellow-insert key
- A new code embossed on the yellow-insert duplication card, enabling the production of an additional key – marked by a red insert – which, when used, invalidates the yellow-insert key
- 3 double-bit keys (length 90 mm)

Installation key

Available on request for all Omega models, the installation key, marked by a black key head, enables the installation of armored doors without disclosing the master key code. Once installation is complete, the installation key is invalidated by inserting the standard owner's key. Then the installation key destroyed.

Construction site key

The construction site key, marked by a black key head, enables access to all areas on a construction site during the building process. When a finished property is handed over to the owner, the pins inside the lock are removed, irreversibly disabling the site key. The owner then opens the sealed envelope containing his own standard property keys and duplication card, for maximum privacy and security.



OMEGA PLUS

Armored Doors Lock

Function

High Security multipoint locking for armored doors

Features

- Latch functionality
- Single or double locking mechanism
- Euro profile cylinder
- Right- or left-hand installation

Options

- 3 triple-bit foldable keys with green inserts
- 1 blue duplication card for the green-insert keys
- 1 triple-bit foldable key with a yellow insert, when used, invalidates the keys with the green insert
- 1 blue duplication card for the yellow-insert key
- Additional key – with red insert which, when used, invalidates the yellow-insert key

Additional features

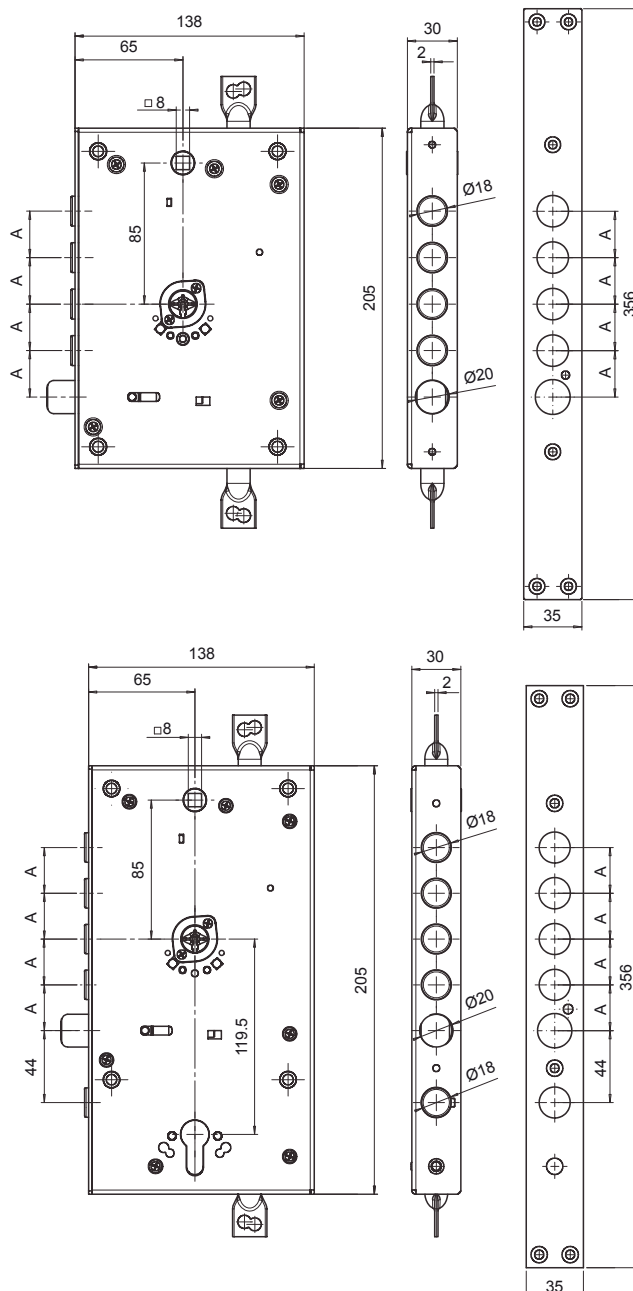
- Latch functionality
- Double locking mechanism
- Euro profile cylinder
- Right- or left-hand installation

Specifications

- Handle operation
- Latch Ø20 mm
- Backset: 65 mm
- Bolt stroke: 30 mm
- Lever stroke: 20 mm
- Bolts Ø18 mm
- 4 bolts for standard 28 mm bolt spacing
- 3 bolts for 37 mm bolt spacing
- Bolt protrusion: 3, 13 mm
- Variety of key lengths

For ordering information see
Mul-T-Lock Italy Catalogue

A - Bolt spacing 28, 37 mm
S - Bolt protrusion 3, 13 mm



Single Locking Mechanism For Armored Doors



Application

A heavy duty multipoint lock for armored doors

Features

- 3 point lock
- Gear-based mechanism
- Latch functionality
- Operated by Euro profile cylinder
- Right- or Left-Hand installation
- When lock is closed, latch can not be withdrawn using the handle

Options

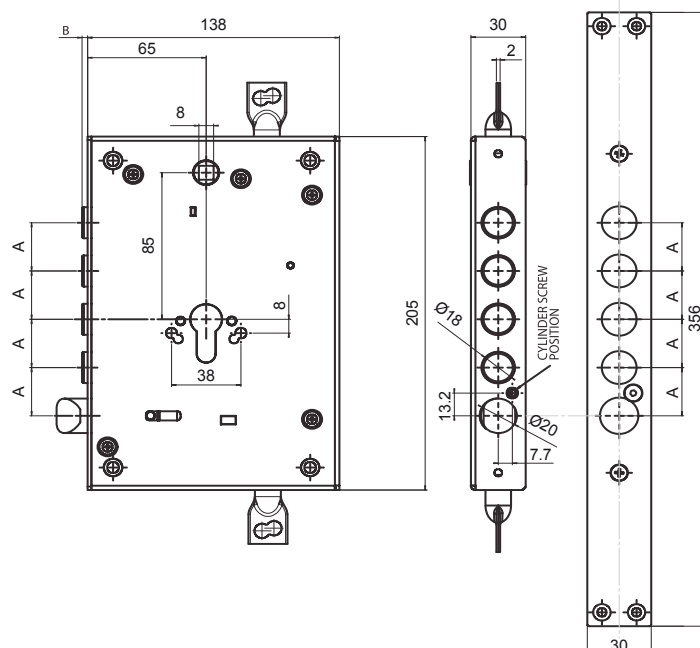
- 4 bolts (Ø18 mm) for standard 28 mm bolt spacing
- 3 bolts for 37 mm bolt spacing

Specifications

- Handle operation
- Latch Ø20 mm
- Backseat: 65 mm.
- Bolt throw: 30 mm
- Lever stroke: 20 mm.
- Bolt protrusion: 3,13 mm
- Variety of key lengths.

A - Bolt spacing (28, 37 mm)

B - Bolt protrusion (03, 13 mm)



For ordering information see
Mul-T-Lock Italy catalogue

[illegible]

Multipoint Locks

Euro Profile Cylinder High Security Protector



Application

Compatible with all Euro profile cylinders.

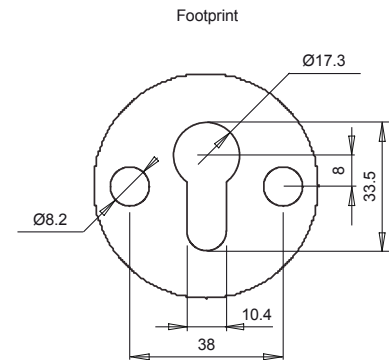
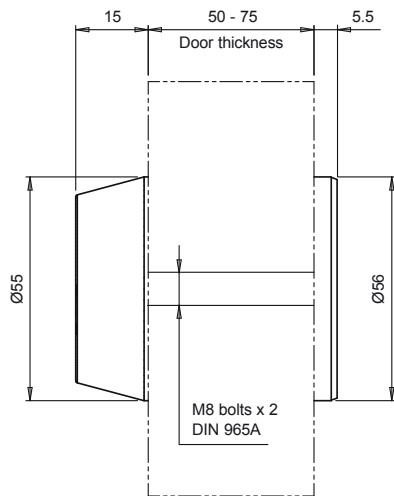
Options

- Hardened steel body
- Drill resistant rotating disk
- M8 screws
- Suitable for door thickness 50-75 mm
- Each set contains screws of different lengths:
 - 4 (2 pairs) M8x65 for door thickness 50-55 mm
 - 20 (10 pairs) M8x75 for door thickness 60-65 mm
 - 4 (2 pairs) M8x85 for door thickness 70-75 mm

Available finishes

Bright chrome, satin chrome, bright brass, brushed nickel

Note: 10 pcs per box



Euro Profile Cylinder Security Protector



Application

Compatible with all Euro profile cylinders.

Protection features

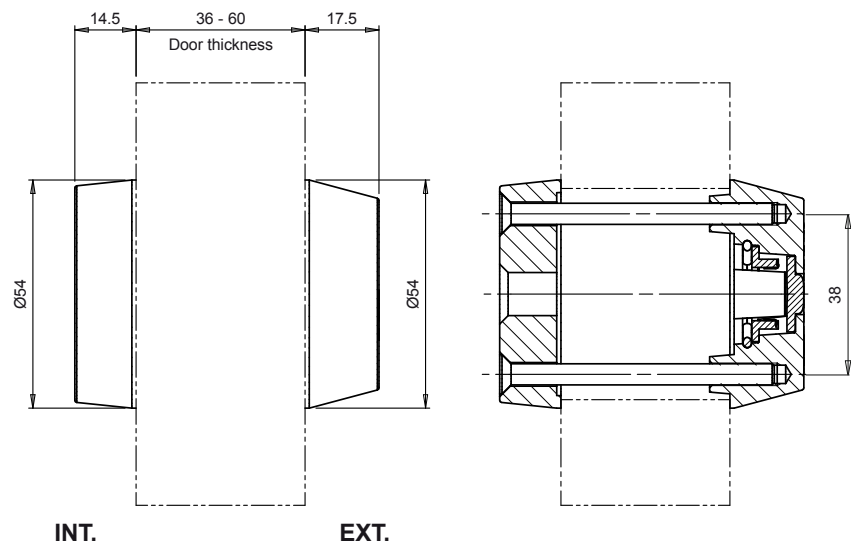
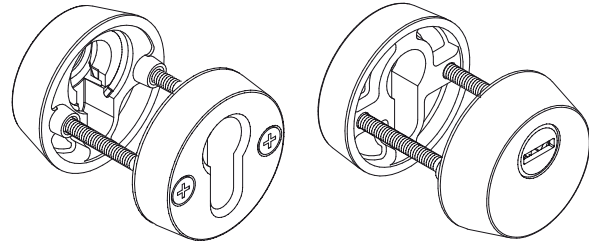
- Hardened steel anti-drill rotating disk
- Anti-pull protection
- Anti-twist protection

Structure & design

- M5 bolt-through
- Large diameter footprint - 54 mm
- All-weather durability
- Attractive design
- Fits variety of door widths

Available finishes

Chrome plated, electro brass, nickel satin



SH300 Hardware



Application

Compatible with Mul-T-Lock 4-way locks and MPL210 lock series.

Options

- Complete set
- Fixed or moving handle
- Suitable for door thickness of 45-70 mm
- Interchangeable CC (center to center) distance – 85/90 mm

Materials

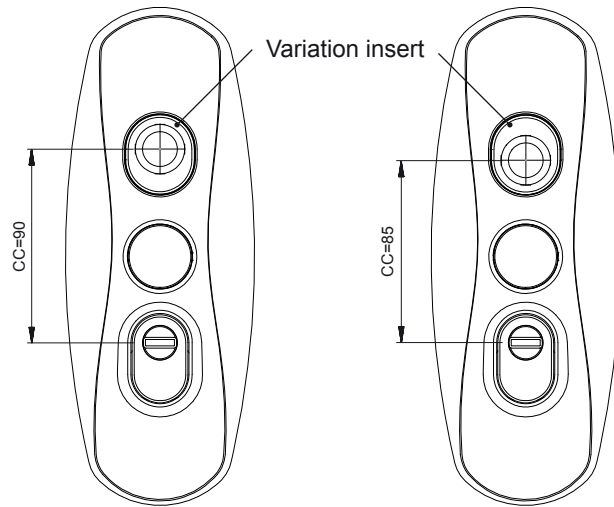
Cylinder protector: stainless steel.
Body with hardened inserts for high drilling resistance.

Base plate: carbon steel with high corrosion resistance plating.

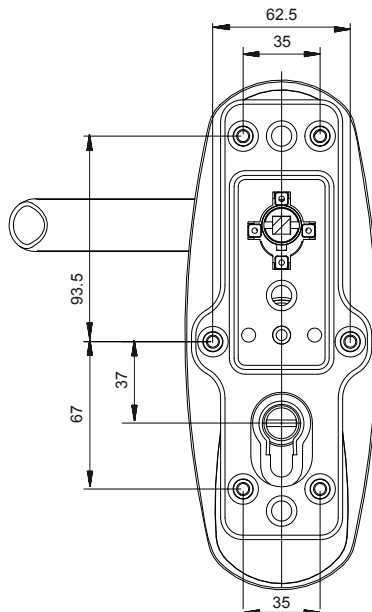
Cover plates: brass.

Available finishes

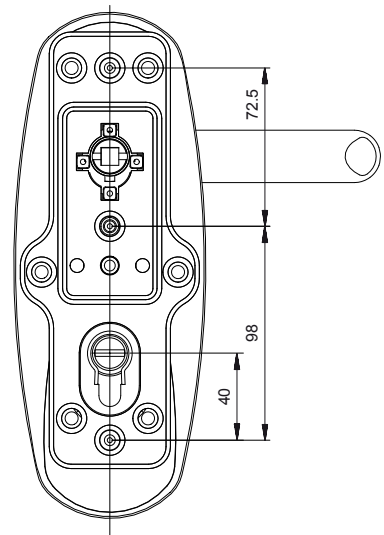
Gold - PVD, nickel chrome, nickel satin.



Variation insert is adjustable for both 85 or 90 mm CC.



Template for 4-way lock



Template for MPL210 series



www.mul-t-lock.com

INDEX



A

AC-D31 & AC-C31.....	94
AC-Q41H & AC-Q41HB.....	95
Anti-Ligature Thumbturn	25

B

Break Secure Cylinder.....	25
Bullet Lock.....	58

C

Cam Lock Ø19 mm ($\frac{3}{4}$ ").....	45
Cam Lock Ø22 mm ($\frac{7}{8}$ ").....	46
Cam Lock Ø29 mm ($1\frac{1}{8}$ ").....	47
Cam Lock for Mail Box.....	48
Classic Platform	9
CliQ® Control Key	81
CliQ® Cylinder	77
CliQ® Local Programming Device	87
CliQ® Manager Software	85
CliQ® Quartz and QuartzXT Key	80
CliQ® Quartz+ Key	79
CliQ® Remote - Mobile Programming Device	82
CliQ® Remote - Wall Programming Device	82
CliQ® Waterproof Padlock.....	78
CliQ® Web Manager Software	84
Code-it	99
Container Lock.....	74
Construction Master Cylinder	24
Cronus.....	66
C-Series Accessories	42
C-Series Padlock.....	34
C-Series Padlock - Sliding Bolt	35
C-Series Padlock - Single Pin	36
Cylinder Accessories	26
Cylinder Cams.....	27
Cylinder Finishes	28

D

Double Locking Mechanism.....	123
Drawer Deadlock.....	55
Drawer Latch Lock.....	56

E

E-Series Padlock	31-33
Electric Strike E7.....	98
ELMG 600 Electromagnet	96
ELMG 1200 Electromagnet.....	97
Emergency Cylinder.....	25
Euro Profile Cylinder	20-21
Euro Profile Cylinder High Security protector	124
Euro Profile Cylinder Security protector	125

F

File Cabinet Lock	60
-------------------------	----

G

G-Series Padlock 47, 55.....	37
G-Series Padlocks 47P, 55P	38
G-Series Padlocks - Plastic Cover	41
Gas Tank Lock	61
General Terms	133

H

HaspLock	39
Hercular® Deadbolt	64-65

I

Integrator® Platform	10
Interactive® + Platform	8

K

Key Deposit Box Lock.....	49
Key Options.....	16-17
Keying Possibilities	12

L

"Lips" Type Key Deposit Box Lock	50
Lock 700 Model	116-117

M

M-60 Mortise Deadlock	62
Master Keying	13-15
MATRIX	118-119
Mini-bars Series Lock	109-115
MPL Series.....	106
MPL415G Lock Set	108
MT5® Platform	7
Multi-Bolt Locking for Cabinet	54
MVP 52	71
MVP 45	72
MVP 22	73

O

OMEGA PLUS.....	120-121
-----------------	---------

P

Plunger Lock	63
ProQsimity® Offline.....	88
ProQsimity® Standalone	89
ProQsimity® Cabinet Lock	92
ProQsimity® ANSI.....	90-91
Push Lock.....	57

R

Reinforced Cylinder	25
Round Padlock	40

S

SH300	126
Showcase Lock	67
Single Locking Mechanism.....	122
SPL Series.....	107
Switch Lock	52-53
Switch Lock for Alarm System	51
SynerCLIQ®	86
SynerKey	93

T

T-Handle Lock	59
TLO - Temporary Lock Out Cylinder	24
Top-Guard®	68

U

U.K. Oval Profile Cylinder	22-23
----------------------------------	-------

Other

3 IN 1 Cylinder	24
4 Way Locks 231,232.....	102
4 Way Locks 235,265.....	103
4 Way Lock 250.....	104
4 Way Lock 603.....	105
7x7® Platform	11



Limited Warranty

Mul-T-Lock hereby warrants, to the end user ("Purchaser") who purchases a genuine Mul-T-Lock® product ("Product"), from an authorized Mul-T-Lock dealer ("Dealer") that the Product will be free from mechanical and/or electronic production defects in materials and workmanship ("Defects"), for a period of two years from the date the Product was shipped from Mul-T-Lock, subject to the terms and conditions indicated below.

Improper Activity shall render this limited warranty void. "Improper Activity" includes any and all of the following: installation by anyone other than a Dealer; improper installation; use/operation/maintenance other than in accordance with Mul-T-Lock's instructions, tampering by Purchaser; neglect; damage by the application of force; acts of vandalism; accidents; misuse; abuse; repair or alteration by anyone other than a Dealer; and use of keys, key blanks, key cutting machines, cylinders, locks, accessories, lubricants and/or other components that are not the suitable and genuine Mul-T-Lock products.

Some basic instructions for correct use of the Product are shown overleaf. Failure to adhere to these instructions shall render this limited warranty void.

Mul-T-Lock's sole obligation under this limited warranty is to repair or replace, at Mul-T-Lock's sole discretion, any Product found by Mul-T-Lock to have a Defect. This limited warranty does not grant any other rights or give rise to any other obligation, or absolve Purchaser of the responsibility to employ any other suitable measures, by whatever means, including insurance, against the risk of personal injury or damage to property. This limited warranty relates to Product's Defects only. Mul-T-Lock shall not be liable, in any event, for any labor costs associated with the Product and its installation process.

In order to facilitate the warranty service and enable Mul-T-Lock to determine entitlement under this warranty, Purchaser must first return the Product, with proof of purchase from a Dealer, and one or more original keys, to Mul-T-Lock, through the Dealer from whom Purchaser purchased the Product. All shipping, handling, travel, service call and/or other incidental and/or related charges are fully payable by Purchaser only and are not included in this limited warranty.

THE USE OF OTHER THAN SUITABLE, GENUINE MUL-T-LOCK® COMPONENTS MAY CAUSE SEVERE DAMAGE TO THE PRODUCT, AND WILL VOID THIS LIMITED WARRANTY. THIS LIMITED WARRANTY MAY NOT BE ASSIGNED OR OTHERWISE TRANSFERRED IN ANY WAY AND MAY NOT BE EXTENDED, ALTERED OR VARIED.

TO THE FULLEST EXTENT ALLOWABLE BY THE LAWS APPLYING HERETO, THIS LIMITED WARRANTY IS IN LIEU OF ANY OTHER WARRANTIES, EITHER EXPRESS OR IMPLIED, INCLUDING BUT NOT LIMITED TO ANY WARRANTIES OF MERCHANTABILITY OR FITNESS FOR A PARTICULAR PURPOSE, ALL OF WHICH ARE EXPRESSLY EXCLUDED AND DISCLAIMED. MUL-T-LOCK WILL NOT BE LIABLE FOR LOSS OF PROFITS, ANY SPECIAL, INCIDENTAL, OR CONSEQUENTIAL DAMAGES, WHICH PURCHASER MAY SUSTAIN, ANY DAMAGES FOR CLAIMS BY ANY THIRD PARTY OR PUNITIVE DAMAGES, EVEN IN THE EVENT OF NOTICE OF THE POSSIBILITY OF SUCH DAMAGES.

MUL-T-LOCK®

YOUR KEY TO HIGH SECURITY

www.mul-t-lock.com



©2012 Mul-T-Lock Technologies Ltd. The Mul-T-Lock name and the muscleman logo, and any other name, mark or logo used by Mul-T-Lock and marked by ® or ™ sign, are registered/pending trademarks of Mul-T-Lock Ltd. in various countries. Mul-T-Lock reserves the right to make any product improvements or modifications without prior notice.

Basic Instructions and Requirements for Correct Use of Mul T Lock® Products

▶ Keys:

- ▶ Keys must be used only for their intended purpose of operating their corresponding cylinder in normal use.
- ▶ Keys must be kept clean and must retain a straight blade.
- ▶ Genuine Mul-T-Lock key blanks must be used.
- ▶ Duplication of keys must be performed by an authorized Mul-T-Lock locksmith on a genuine Mul-T-Lock® key cutting machine.
- ▶ Keys must be inspected periodically and must be replaced when they show physical wear.

▶ Cylinders:

- ▶ Installation must be performed by an authorized Mul-T-Lock dealer only.
- ▶ A Cylinder is a mechanical device which requires regular preventive maintenance.
- ▶ Cylinders must not be submerged in water, or exposed to any chemical wash, or be painted.
- ▶ Protect the cylinder from dirt and dust.
- ▶ Protect your cylinder from exposure to extreme temperatures (-20C to +80C)
- ▶ Interactive® CLIQ® cylinders utilized on any exterior door and/or any other outdoor application must be purchased with extreme weather shutter and rain guard options (sold separately). Failure to specify the nature of the product's application and the need for extreme weather shutter and rain guard option at the time of product purchase shall void the warranty.
- ▶ The cylinder's keyway must be lubricated with Mul-T-Lock approved lubricant at least twice a year as normal maintenance. In heavy use environments and extreme weather conditions, lubrication must be performed every three months. Increased usage and exposure generally necessitate more frequent lubrication.



General Terms and Conditions of Sale and Trade

1. Conditions of Sale

All sales made or negotiated by Mul-T-Lock Technologies Ltd. ("MTLT") shall be subject to the Terms and Conditions set forth herein, which may be added to, modified, superseded or otherwise altered only by written instrument signed by authorized executives of MTLT. Failure of MTLT to object to any provisions that may be contained in any order or other form of Buyer, shall not be construed as a waiver of these Terms and Conditions nor an acceptance of any such provision.

2. Shipment and Delivery

Unless otherwise specifically agreed by writing, delivery terms are F.O.B. Israel. Buyer shall assume all risk of loss or damage upon delivery to carrier at the port of shipment, even if other delivery terms are agreed upon. Shipping dates are approximate and are based upon prompt receipt of all necessary information. MTLT shall not be liable for delays in delivery or failure to manufacture or deliver due to causes beyond its control, such as but not limited to: acts of God, acts of Buyer, acts of Authority, delays in transportation, etc. in which case, the date of delivery shall be extended for a period equal to time lost by reason of the delay. Goods shall be supplied +/- 5% of ordered quantity. Partial shipments may be made.

3. Payment Terms

Unless otherwise agreed in writing, payment should be in accordance to the payment terms stated on the invoice. If payments are not made when due, Buyer will pay, in addition to the overdue payment a late charge equal to the lesser of 1.5% per month or the highest applicable rate allowed by law on such overdue amounts. Payment should be made by an irrevocable Letter of Credit (L/C) confirmed by a first class bank acceptable to MTLT, to be opened by Buyer and received by MTLT at least nine weeks before ex-factory delivery date. If payment C.A.D. will be agreed upon, Buyer undertakes to release the shipment from carrier within two weeks from arrival at port of destination. All payments to MTLT by bank remittance are to be effected by electronic bank transfer.

4. Prices

Prices are subject to changes and will be indicated on each order confirmation/proforma invoice. MTLT's price lists are for general information only, and do not constitute a binding open offer by MTLT for the sale of Products. MTLT reserves the right to make modifications, or changes at any time without prior notice

5. Possession and Title

The goods shall remain in MTLT's legal and equitable ownership until such time as Buyer pays to MTLT the agreed price together with the full price of any goods which are the subject of any other order placed with MTLT, and until such payment, Buyer shall be in possession of the goods in a fiduciary capacity as bailee for MTLT.

MTLT normally will not accept Products for re-stocking.

Any cancellation of Products within 7 working days, will be accepted subject to payment of 15% of the purchase order as an handling fee and will bear all transportation costs.

6. Default of Infringement

6.1 In the event that at any time Buyer is in default of payment or in breach of these terms, MTLT reserves the right to withhold delivery, cancel and terminate any order, and hold Buyer liable for any damage or expenses incurred by or to MTLT.

6.2 In addition to the above, MTLT reserves the immediate right to re-possess any goods to which it has retained title as aforesaid and thereafter to re-sell the same, without prejudice to any of MTLT's rights hereunder or otherwise.

7. Mul-T-Lock Restrictive Key Cutting System

Buyer undertakes to follow and to act according to MTLT's Restrictive Key Cutting System as in force from time to time, and to request its latest version from MTLT.

8. Trade Relations

Relations under these terms are those of seller and buyer for each sale and should not be construed as an undertaking for continuing sales. Buyer has no right to create any obligation or responsibility whatsoever on behalf or in the name of MTLT, nor use MTLT's trademarks and/or tradenames without MTLT's express written consent, nor by any act of omission, harm the good reputation of MTLT.

9. Warranty and Liability for Goods Sold

The Warranty supplied with goods purchased hereunder will be the sole warranty with respect to such goods. The Buyer will provide to dealers and end-user customers all warranty service under the terms of the Warranty for the entire period specified therein. MTLT will repair or replace at its sole discretion the product parts specified in the warranty, subject to entitlement under the warranty and under the terms thereof. MTLT shall not be liable for consequential or incidental damages, or for any expenses or losses incurred by Buyer and/or dealers and/or end-user customers for any reason whatsoever, including but not limited to any expenses or losses associated with an unauthorized representation or warranty as to the goods.

10. Language

The only foreign language binding MTLT in correspondence, documents, etc., shall be the English language.

11. Applicable Law and Jurisdiction

These terms are governed by and construed according to the laws of the State of Israel. The exclusive jurisdiction with respect to any dispute arising between the parties under these terms shall be with the Competent Court in the District of Tel-Aviv, Israel.

About Mul-T-Lock

For close to 40 years, Mul-T-Lock has been designing, manufacturing, marketing and distributing innovative High Security locking solutions to people, places and organizations globally. Adhering to the world's most stringent standards, Mul-T-Lock High Security solutions are at work on every continent, in nearly 100 countries, and securing over 100 million users. Using advanced and patented technologies, Mul-T-Lock stays a step ahead of the market by anticipating customers' security and operational needs.

As a member of the ASSA ABLOY group, and with availability through over 20,000 authorized and trained service centers, customers rely on Mul-T-Lock to provide proven, proactive and protective High Security locking platforms.

Mul-T-Lock Tanzania
102 Kinondoni Road
P.O.B. 78282
Dar es Salaam, Tanzania

Tel: +255 (0) 22-266-6547
Fax: +255 (0) 22-266-7912
Mobile: +255 (0) 754-271-890

ASSA ABLOY is the global leader in door opening solutions, dedicated to satisfying end-user needs for security, safety and convenience.

www.mul-t-lock.com

The Mul-T-Lock name and the muscleman logo, and any other name, mark or logo used by Mul-T-Lock and marked by an ® or ™ sign are registered/pending trademarks of Mul-T-Lock Ltd. in various countries. Mul-T-Lock reserves the right to make any product improvements or modifications without prior notice. © 2012 Mul-T-Lock Technologies Ltd. Cat. No.98101183-A

An ASSA ABLOY Group brand

ASSA ABLOY